



Ikiyamakuru ku miterere y'ibihe N°12/2017:

Taliki ya 1–30 Mata 2017

Ryoherejwe kuwa 3 Gicurasi 2017

**Ingingo z'ingenzi:**

- o **Igiteranyo cy'imvura** yabonetse muri Mata 2017; cyagaragaje imvura yabaye nke kubera igabanuka ry'imvura ryabonetse mu gice cya 2 cya Mata\_2017
- o **Ububobere bw'ubutaka** bwagaragaje ubwiyongere muri bice byose uko ari 3 by'ukwezi kwa Mata
- o Ukwezi kwa Gicurasi\_2017; hateganyijwe **ibihe by'imvura nke n'ubwiganze bw'ibicu kugera mu mpera z'igice cya mbere cya Gicurasi\_2017**

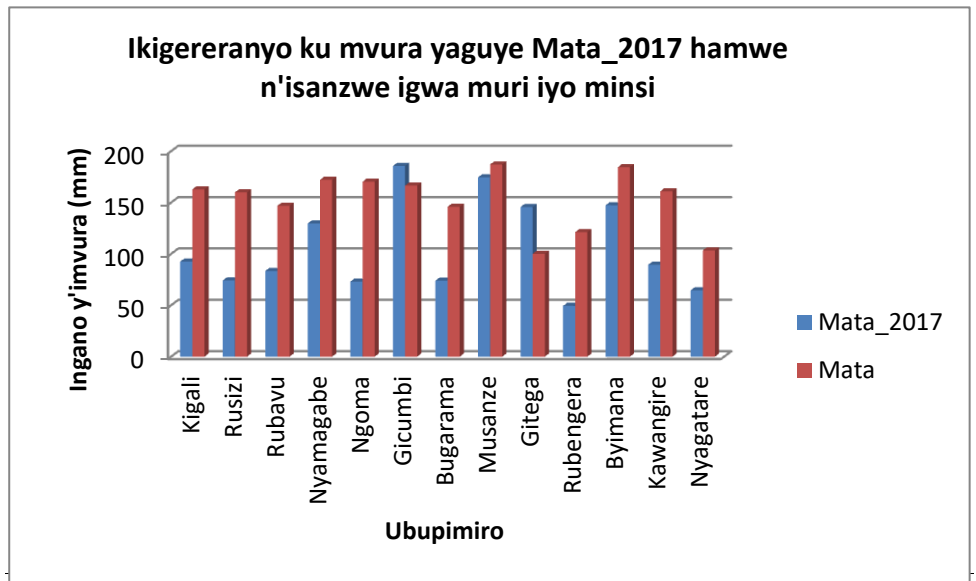
**I. Iriburiro**

Igiteranyo cy'imvura yaguye muri Mata\_2017 cyagaragaje imvura iringaniye mu gihugu hose. Mu gice cya 2 hagaragaye iminsi itaraguyemo imvura aribyo byanatunze imvura iba nke ugereranyije n'iyari isanzwe igwa muri uko kwezi.

- a) Imbonerahamwe zikurikira zirererekana ikigereranyo ku mvura yaguye muri Mata\_2017 ndetse n'imvura isanzwe igwa muri iyo minsi kuri buri bupimiro

**Igiteranyo cy'imvura kuri buri bupimiro (muri mm)**

Ubupimiro	Mata_2017	Mata
Kigali (Kanombe)	92.5	162.9
Rusizi (Kamembe)	74.2	159.9
Rubavu (Gisenyi)	83.4	146.9
Nyamagabe (Gikongoro)	129.7	172.1
Ngoma (Kibungo)	73.1	170.3
Gicumbi (Byumba)	185.6	166.5
Bugarama	74	145.9
Musanze (Ruhengeri)	174.5	187.1
Gitega	145.6	100.1
Rubengera	49.4	121.2
Byimana	147.4	184.4
Kawangire	89.4	161
Nyagatare	64.6	103.4

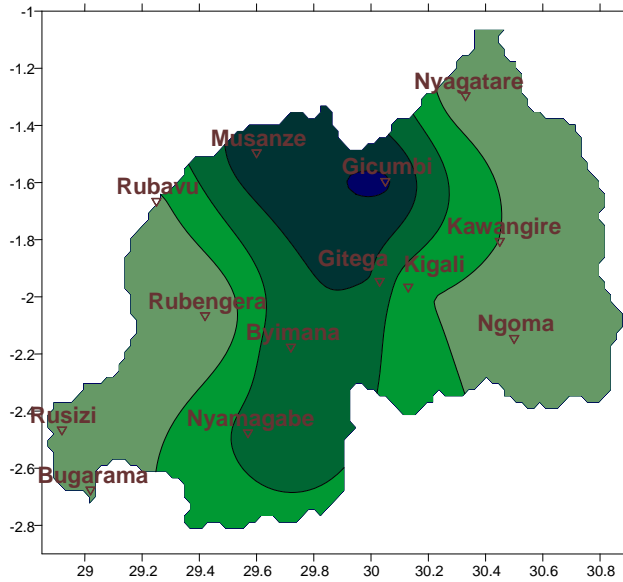


Igishushanyo 1

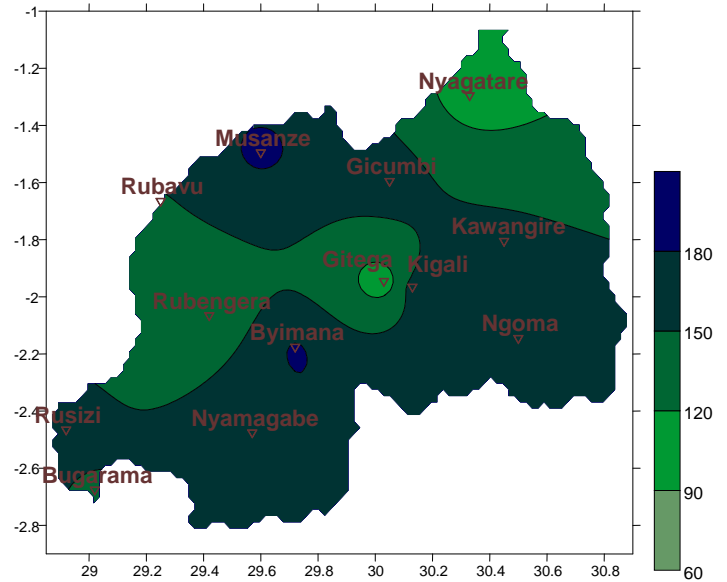
Imbonerahamwe ya

b) **Ubusesenguzi ku mvura yaguye:** Ikarita zikurikira (iya **1&2**) zigereranya igiteranyo cy'imvura yaguye muri Mata\_2017; imvura isanzwe igwa muri iyo minsi. Naho Ikarita **3&4** zikerekana igiteranyo cy'imvura yaguye mu Werurwe\_2017 ndetse n'isanzwe igwa muri ayo Gicurasiliki.

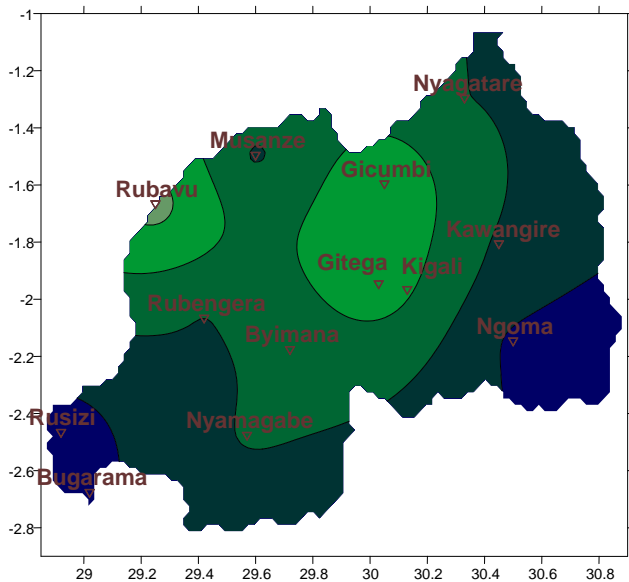
**Ikarita ya1: Imvura yaguye (mm): Mata\_2017**



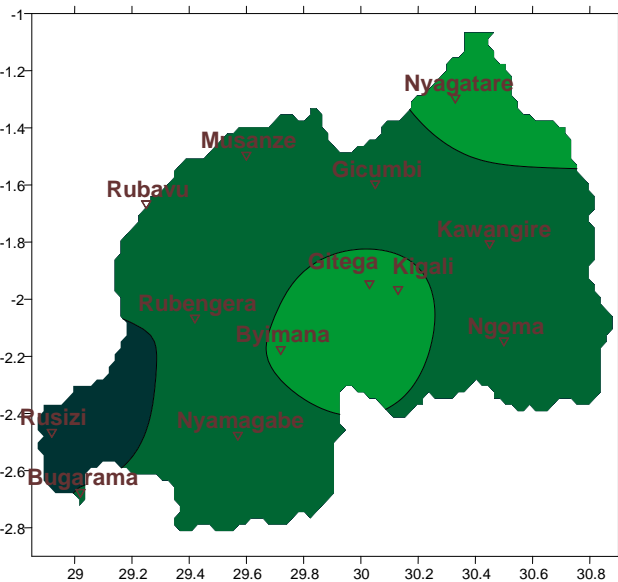
**Ikarita ya2: Imvura isanzwe igwa (mm): Mata**



**Ikarita ya3: Imvura yaguye (mm): Werurwe\_2017**



**Ikarita ya4: Imvura isanzwe igwa (mm): Werurwe**



## II. Uko imvura yaguye hirya no hino mu gihugu muri Mata\_2017 mu buryo burambuye

Ku bupimiro hafi ya bwose hagaragaye imvura nke itarabashije kugera ku gipimo cy'isanzwe igwa muri Mata; uretse ubupimiro bwa Gitega, Musanze ndetse na Gicumbi hagaragaye imvura iri mu kigero cy'iyosanzwe tubona (reba **Ikarita1&2**). Igiteranyo cy'imvura yabonetse muri Werurwe\_2017 cyerekanyeko haguye imvura iri ku kigero cy'isanzwe iboneka uretse mu gice cy'amajyepfo n'uburasirazuba bw'u Rwanda habonetse imvura nyinshi kuyari isanzwe iboneka muri uko kwezi (reba **Ikarita3&4**).

### a) Intara y'Iburasirazuba

Imvura yabonetse yari mu kigero cyo muni ugereranyije n'imvura isanzwe igwa muri Mata (reba **Imbonerahamwe ya1** ndetse n' **Ikarita1&2**)

### b) Intara y'Amajyaruguru

Imvura yabonetse muri iyi Ntara yari mu kigero cy'isanzwe iboneka muri Mata, aho ku bupimiro bwa Gicumbi ariho habonetse imvura nyinshi mu Rwanda hose ingana na mm185.6 (reba **Imbonerahamwe ya1** ndetse n' **Ikarita1&2**)

### c) Intara y'Amajyepfo

Imvura yabonetse yari mu kigero cyo muni ugereranyije n'imvura isanzwe igwa muri Mata (reba **Imbonerahamwe ya1** ndetse n' **Ikarita1&2**)

#### d) Intara y'i Burengerazuba

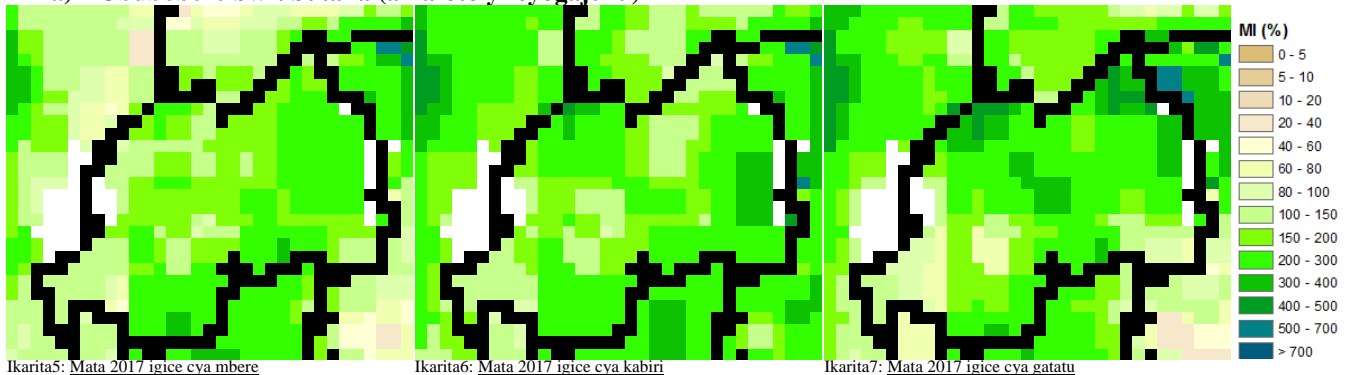
Imvura yabonetse yari mu kigero cyo munsu ugereranyije n'imvura isanzwe igwa muri Mata (reba **Imbonerahamwe ya1** ndetse n' **Ikarita1&2**)

#### e) Umujyi wa Kigali

Mu gihugu hagati hagaragaye imvura iri ku kigereranyo cy'isanzwe iboneka mu kwezi kwa Mata ikiyongera ugana mu burengerazuba bw'Umujyi wa Kigali (reba **Imbonerahamwe ya1** n' **Ikarita ya1&2**)

### III. Ingaruka ku Buhinzi

#### a) Ububobere bw'ubutaka (amafoto y'icyogajuru)



Muri Mata\_2017; amafoto y'icyogajuru yerekana ubwiyongere bw'ubuhehere uko ibice by'uko kwezi byagiye bikurikirana (**Ikarita 5, 6&7**; zirerekana ibice bya Mata; icya mbere; icya kabiri ndetse n'icya gatatu uko bikurikirana) kubera uko imvura yagiye iboneka muri uko kwezi

Muri Gicurasi\_2017; hateganijwe ubwiganze bw'ibicu ndetse n'imvura nke. Abahinzi barasabwa gukomeza gushyira mu bikorwa ingamba zose zijyanye n'ibi bihe by'imvura nke dusigaje muri uku kwezi kwa Gicurasi\_2017

#### Iteganyagihe ry'ukwezi kwa Gicurasi\_2017

Hateganijwe imvura ubwiganze bw'ibicu n'imvura nke; ndetse n'igabanuka ry'imvura henshi mu gihugu

**Umujyi wa Kigali**; hateganijwe ibicu byiganje ndetse n'imvura nke mu gice cya mbere cy'uku kwezi.

**Intara y'Uburasirazuba**; hateganijwe ibicu byiganje ndetse n'imvura nke.

**Intara y'Uburengerazuba**; hateganijwe imvura nke.

**Intara y'Amajyaruguru**; hateganijwe imvura nke mu gice cya mbere n'icya kabiri cy'uku kwezi.

**Intara y'Amajyepfo**; hateganijwe ibicu byiganje ndetse n'imvura nke.

**N.B:** Iri teganyagihe rigomba kwifashishwa hagendewe kurisohoka buri munsu (buri masaha 24), iry'iminsi itatu (3), itanu (5) ndetse n'iry'iminsi irindwi (7) ritangwa n'Ikigo cy'Ubumenyi bw'Ikirere (Meteo Rwanda)