



Highlights:

- o **The cumulative rainfall** for dekad2_April_2018 was more enhanced in the north-western and south-western while the rest of the country rainfall was within the range of Long Term Mean (LTM)
- o The rains that was received in the second dekad of Apr_2018; are little compared with what we received during the previous dekad; although the soil still in favour with very wet soil
- o The forecast for dekad3_April_2018, rains are expected to be high over western and northern highlands of Rwanda and less over eastern low land areas

I. Introduction

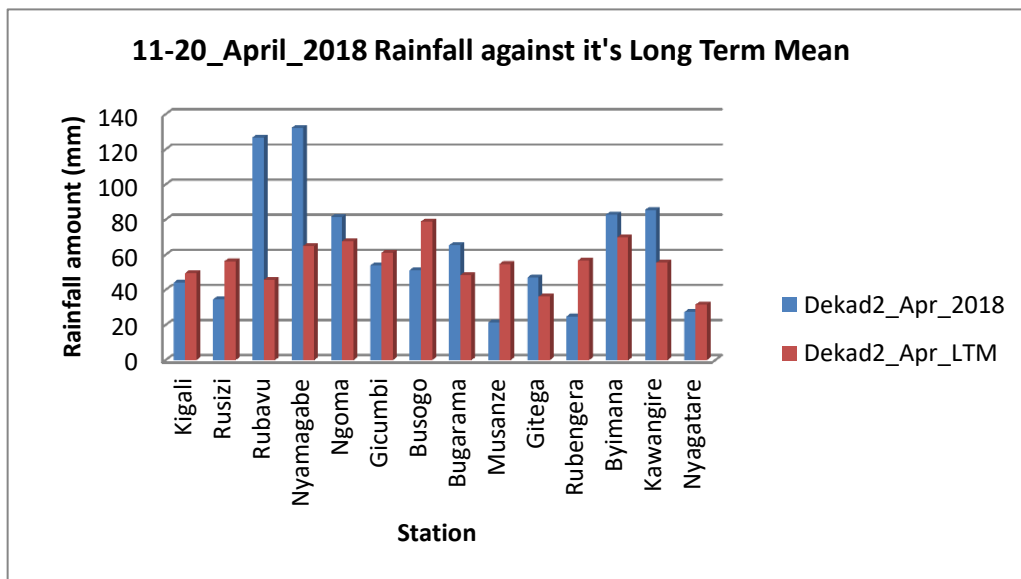
The dekad2_April_2018 was enhanced in the north-west and south-west (especially at Nyamagabe and Rubavu stations) while the remaining part ranges in the normal category

a) The table and histogram below indicates the rainfall recorded during dekad2 April_2018:

Cumulative rainfall (in mm) recorded at different stations

Station	Dekad 2_Apr 2018	Dekad2_Apr_L TM
Kigali	44.3	49.6
Rusizi (Kamembe)	34.7	56.4
Rubavu (Gisenyi)	126.9	45.8
Nyamagabe (Gikongoro)	132.4	65.0
Ngoma (Kibungo)	81.7	67.8
Gicumbi (Byumba)	54.0	61.3
Busogo	51.3	79.0
Bugarama	65.4	48.3
Musanze (Ruhengeri)	21.5	54.8
Gitega	47.1	36.2
Rubengera	25.0	56.8
Byimana	82.9	69.9
Kawangire	85.6	55.5
Nyagatare	27.4	31.7

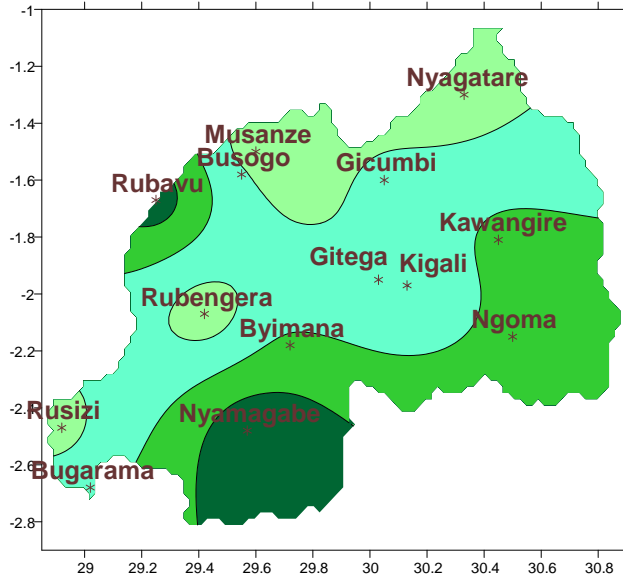
Table1



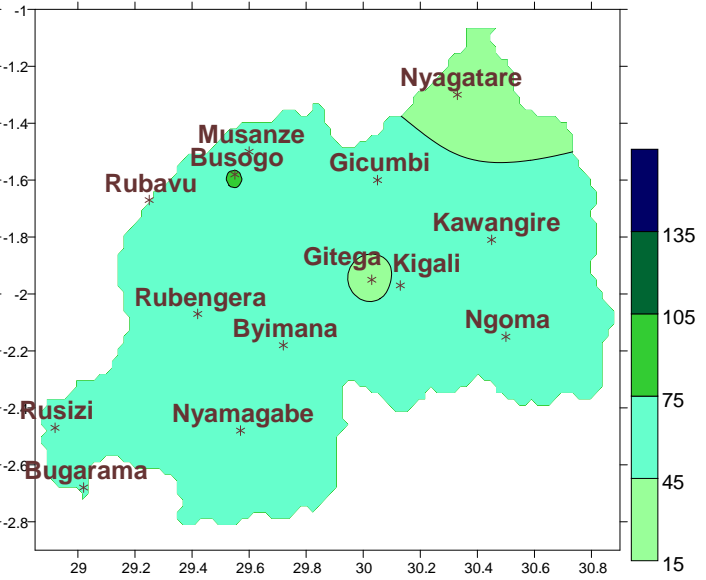
Plot1

b) **Rainfall analysis:** The maps “**Map 1 and 2**” below show the cumulative rainfall recorded during dekad2_April_2018 and the cumulative rainfall for the same period
 The maps “**map 3 and 4**” show the cumulative rainfall recorded during dekad1_April_2018 and the cumulative rainfall for the same period

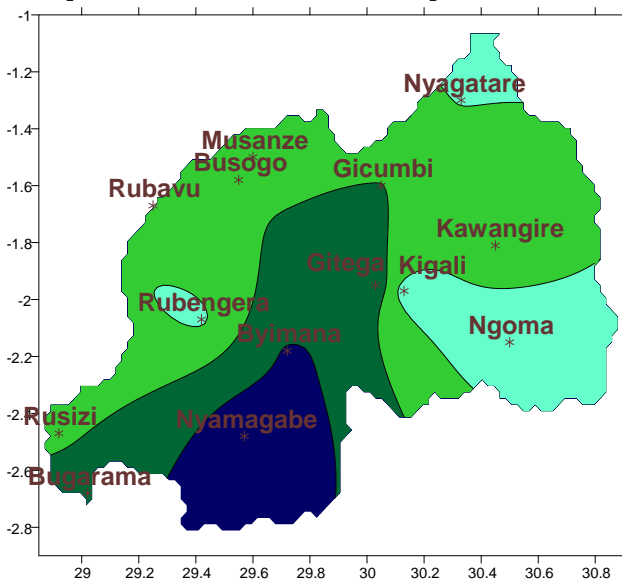
Map1: Total Rainfall (mm): dekad2_Apr_2018



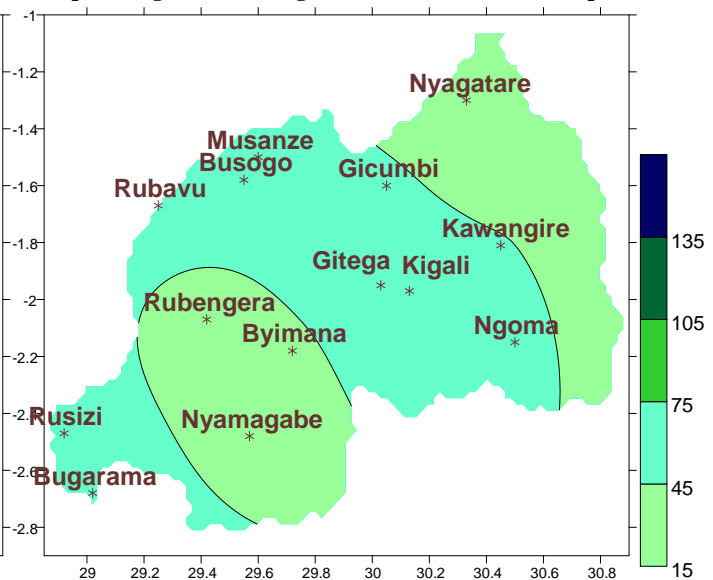
Map2: Long Term Average Rainfall (mm): dekad2_Apr_LTM



Map1: Total Rainfall (mm): dekad1_Apr_2018



Map2: Long Term Average Rainfall (mm): dekad1_Apr_LTM

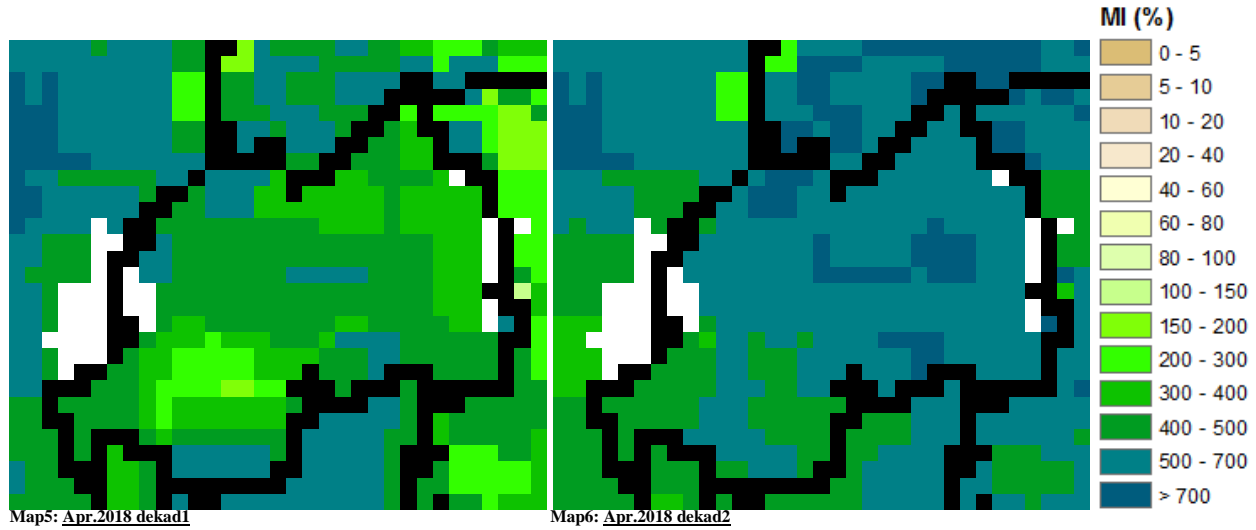


II. Detailed observed rainfall during the dekad2_April_2018

The dekad2_April_2018 was enhanced in the north-west and south-west (especially at Nyamagabe and Rubavu stations) while the remaining part of the country was within the range of LTM (see **Map1&2** and **Table1**); For dekad1_April_2018 it was extremely wet over central and south western parts of the country while the remaining parts of the country was nearly the LTM cumulative recorded values (see **Map3&4**)

III. Agricultural impact.

a) Satellite images: Soil Moisture Index (MI)

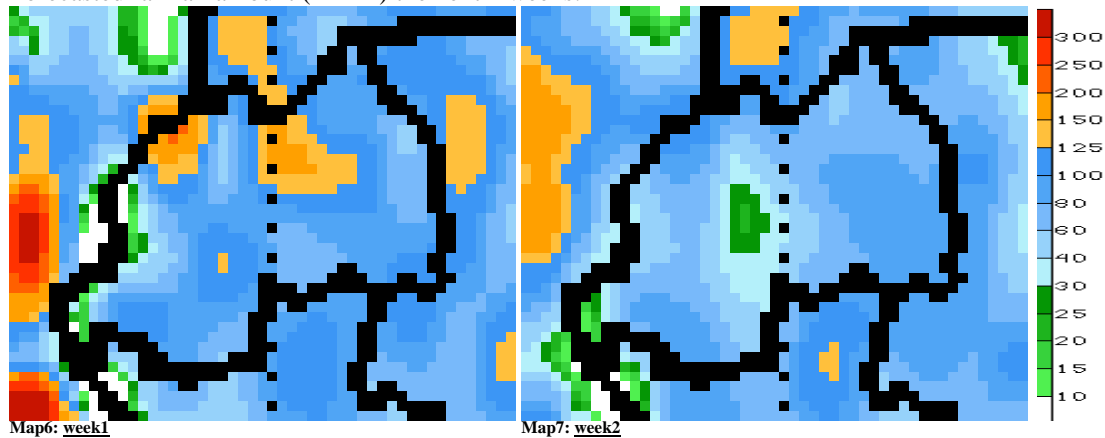


During dekad1 to dekad2_April_2018; the satellite derived moisture index keeps on showing on high soil moisture content as a result of cloudy conditions and rainfall events that occurred during the same period (see **Map 5&6**)

b) Rainfall forecast for dekad3 April_2018

The forecast for dekad3_April_2018 rains are expected to be slightly high over northern parts but elsewhere within the country; it will range within the LTM

Forecasted rainfall amount (in mm) the next 2 weeks:



N.B: This forecast should be used in conjunction with the daily (24-hour), Three (3), Five (5) and Seven (7) days forecasts issued by the Rwanda Meteorology Agency (Meteo Rwanda)