



Ingingo z'ingenzi:

- o **Igiteranyo cy'imvura** yabonetse kuva taliki 11-20_Mata_2018; cyagaragaje imvura yabaye nyinshi mu majyepfo y'Uburengerazuba ndetse no mu majyaruguru y'uburengerazuba; ahandi hose mu gihugu hakaboneka imvura iri mu kigero cy'isanzwe ihaboneka muri iyo minsi
- o Nubwo imvura yaguye mu mataliki ya 11-20_Mata_2018 yabaye nkeya ugereranyije n'iyabonetse mu gice cyakibanjirije; ubutaka burakerekana ubuhehere bubereye ibihingwa
- o **21-30_Mata_2018**; hazaboneka imvura nk'iyabonetse izaba nyinshi mu misozi miremire yo mu gihugu ikaruta cyane izaboneka ahandi hasigaye mu gihugu

I. Iriburiro

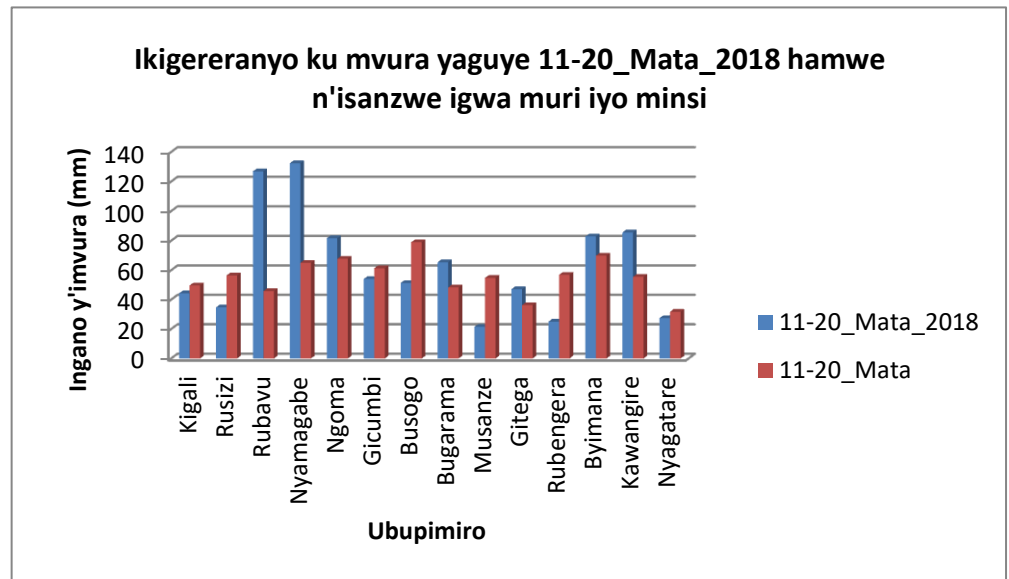
Igiteranyo cy'imvura yabonetse muri 11-20_Mata_2018; cyagaragaje imvura yabaye nyinshi mu majyepfo y'Uburengerazuba ndetse no mu majyaruguru y'uburengerazuba (cyane ku bupimiro bwa Nyamagabe na Rubavu); ahandi hose mu gihugu hakaboneka imvura iri mu kigero cy'isanzwe ihaboneka muri iyo minsi

- a) Imbonerahamwe zikurikira zirerekana ikigereranyo ku mvura yaguye hagati ya 11-20_Mata_2018 ndetse n'imvura dusanzwe tubona muri iyo minsi kuri buri bupimiro:

Igiteranyo cy'imvura kuri buri bupimiro (muri mm)

Ubupimiro	11-20_Mata_2018	11-20_Mata
Kigali	44.3	49.6
Rusizi (Kamembe)	34.7	56.4
Rubavu (Gisenyi)	126.9	45.8
Nyamagabe (Gikongoro)	132.4	65.0
Ngoma (Kibungo)	81.7	67.8
Gicumbi (Byumba)	54.0	61.3
Busogo	51.3	79.0
Bugarama	65.4	48.3
Musanze (Ruhengeri)	21.5	54.8
Gitega	47.1	36.2
Rubengera	25.0	56.8
Byimana	82.9	69.9
Kawangire	85.6	55.5
Nyagatare	27.4	31.7

Imbonerahamwe yal

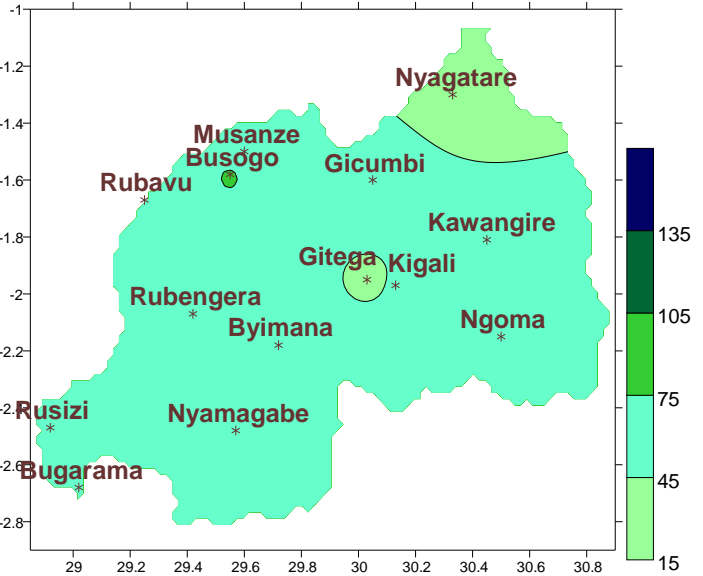
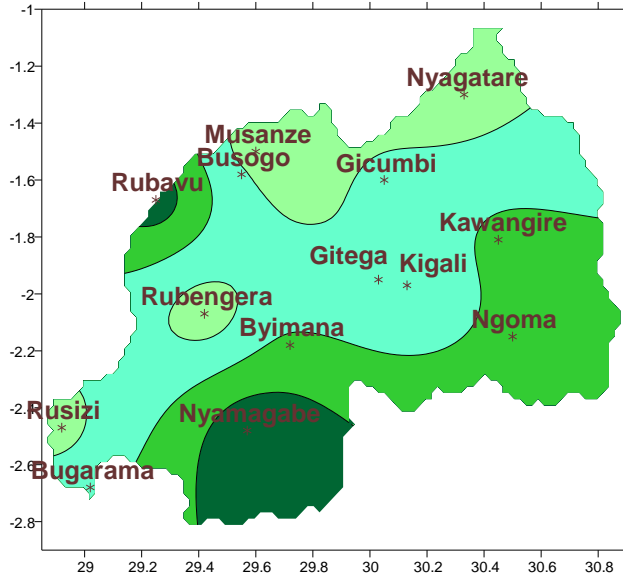


Leishushanyo1

b) **Ubusesenguzi ku mvura yaguye:** Ikarita zikurikira (iya **1&2**) zigereranya igiteranyo cy'imvura yaguye hagati ya 11-20 Mata_2018 ndetse n'imvura isanzwe igwa muri iyo minsi
 Naho Ikarita **3&4** zikerekana igiteranyo cy'imvura yaguye hagati ya 01-10 Mata_2018 ndetse n'isanzwe igwa muri ayo mataliki

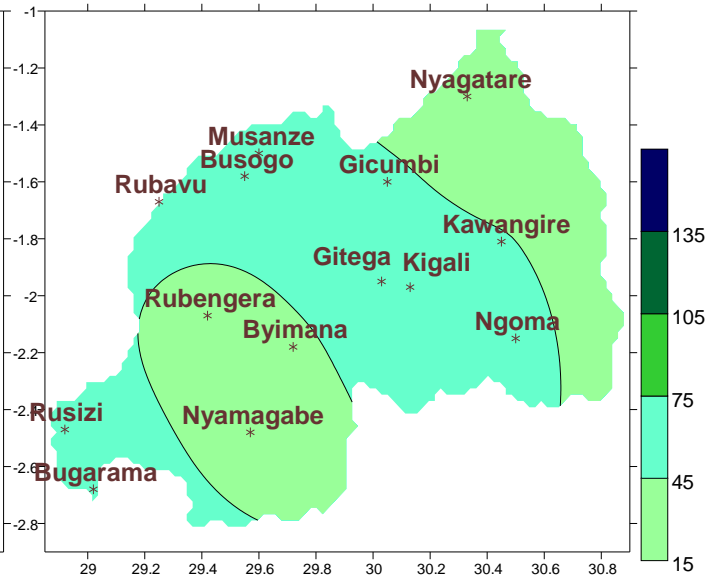
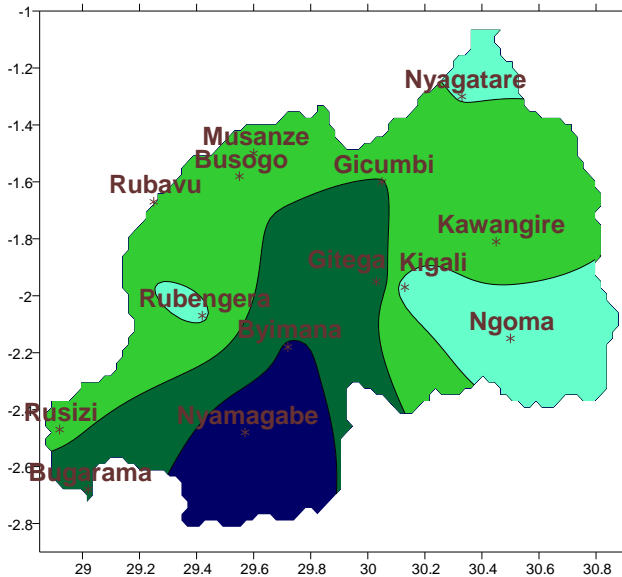
Ikarita ya1: Imvura yaguye (mm): 11-20_Mata_2018

Ikarita ya2: Imvura isanzwe igwa (mm): 11-20_Mata



Ikarita ya1: Imvura yaguye (mm): 01-10_Mata_2018

Ikarita ya2: Imvura isanzwe igwa (mm): 01-10_Mata

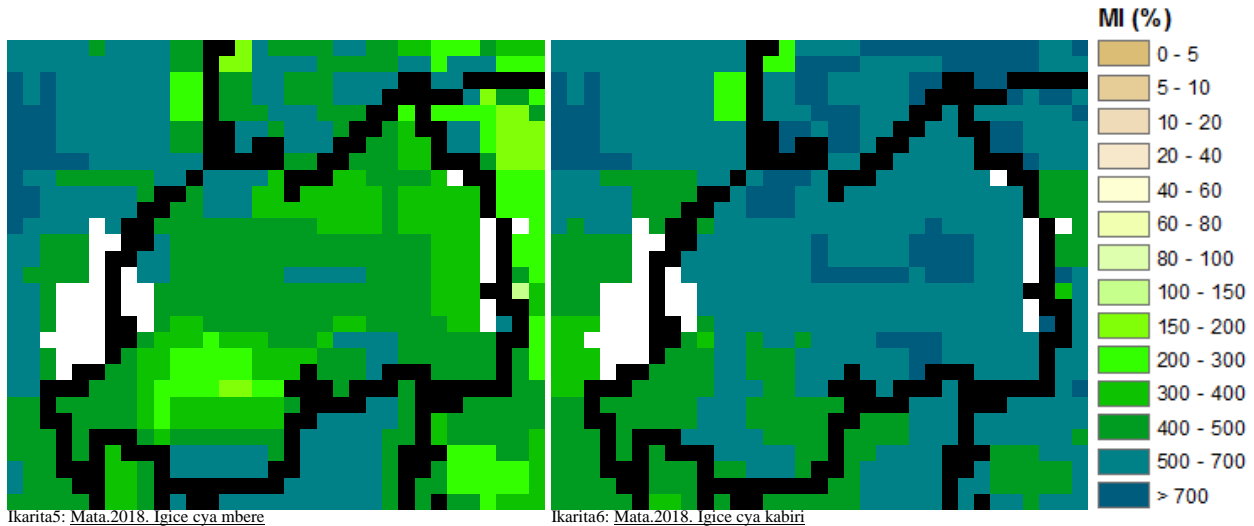


II. Uko imvura yaguye hirya no hino mu gihugu mu mataliki ya 11-20_Mata_2018 mu buryo burambuye

Igiteranyo cy'imvura yabonetse muri 11-20_Mata_2018; cyagaragaje imvura yabaye nyinshi mu majyepfo y'Uburengerazuba ndetse no mu majyaruguru y'uburengerazuba (cyane ku bupimiro bwa Nyamagabe na Rubavu); ahandi hose mu gihugu hakaboneka imvura iri mu kigero cy'isanzwe ihaboneka muri iyo minsi (reba **Ikarita1&2** n'**Imbonerahamwe1**); naho igiteranyo cy'imvura yabonetse mu mataliki ya 01-10_Mata; cyagaragaje ko imvura yabaye nyinshi hose mu gihugu kuri buri bupimiro (reba **Ikarita3&4**)

III. Ingaruka ku Buhinzi

a) Ububobere bw'ubutaka (amafoto y'icyogajuru)

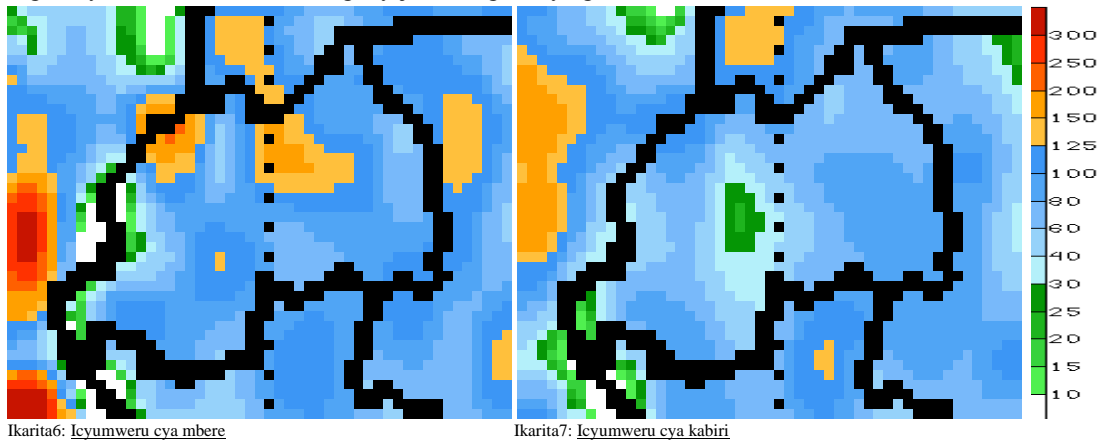


Mu gice cya mbere ndetse n'icya kabiri bya Mata_2018; amashusho y'icyogajuru akomeza kwerekana ubutaka buheherewe bitewe n'ubwiganze bw'ibicu byatumye hatabaho ubuyayuke bw'amazi ndetse n'imvura yagiye igwa muri iyo minsi 20 ishize (reba **Ikarita 5&6**)

b) Iteganyagihe ry'igice cya gatatu Mata_2018

21-30_Mata_2018 hateganijwe kuzaboneka imvura izaba nyinshi mu misozi miremire yo mu gihugu ((ku kigero cyo hejuru y'isanzwe ihaboneka) ikaruta cyane ndetse izaboneka ahandi hasigaye mu gihugu (imvura izaba iri ku kigero cy'isanzwe iboneka)

Ingano y'imvura (muri mm) iteganyijwe mu gice cya gatatu Mata_2018



N.B: Iri teganyagihe rigomba kwifashishwa hagendewe kurisohoka buri muni (buri masaha 24), iry'iminsi itatu (3), itanu (5) ndetse n'iry'iminsi irindwi (7) ritangwa n'Ikigo cy'Ubumenyi bw'Ikirere (Meteo Rwanda)