



Ikinyamakuru N°24/2016;

taliki ya1– 31 Kanama 2016

Ryoherejwe kuwa 2 Nzeri 2016

**Ingingoz’ingenzi:**

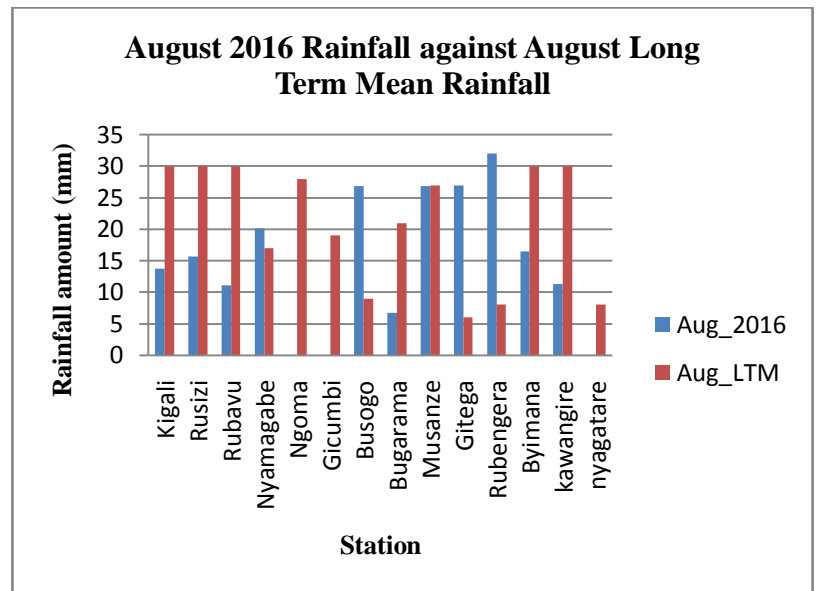
- Ikigereranyo cy’imvura yaguye hagati y’amataliki ya 1-31 Kanama 2016 kiri muni y’ikigereranyo cy’imvura isanzwe igwa mu bice byinshi by’igihugu
- Ubuhehere bw’ubutaka bwaragabanutse mu duce twinshi tw’igihugu bitewe n’iminsi ikurikiranye yanzwe n’izuba ndetse n’ibicu bike
- Kuva ubu kugeza ku italiki ya 10 z’uku kwezi (Nzeri), hateganyijwe ubwiyongere bw’indangabihe (Ibicu n’imvura) ugereranyije n’ukwezi gushize (Kanama).

**I. Iriburiro**

- a) Ukwezi kwa Kanama 2016 kwaranzwe n’ibice bibiri by’izuba ryinshi ndetse n’imvura yabonetse mu kwezi hagati cyane cyane mu majyepfo y’uburengerazuba kubupimiro bwa Nyamagabe ndetse n’amajyaruguru y’u Rwanda kubupimiro bwa Busogo na Musanze. Igiterano cy’imvura yaguye mu kwezi kwa Kanama cyerekanako imvura nyinshi kurusha ahandi yabonetse mu Ntara y’Uburengerazuba kubupimiro bwa Rubengera ingana na mm 32.0; naho imvura nke iboneka kubupimiro bwa Nyagatare na Ngoma mu Ntara y’Iburasirazuba ndetse na Gicumbi mu Ntara y’Amajyaruguru habonetse imvura iri muni ya mm 0.85 (ubu bupimiro uko ari butatu bwerekanye imvura iri muni y’isanzwe igwa muri utu duce mu gihe kimwe)

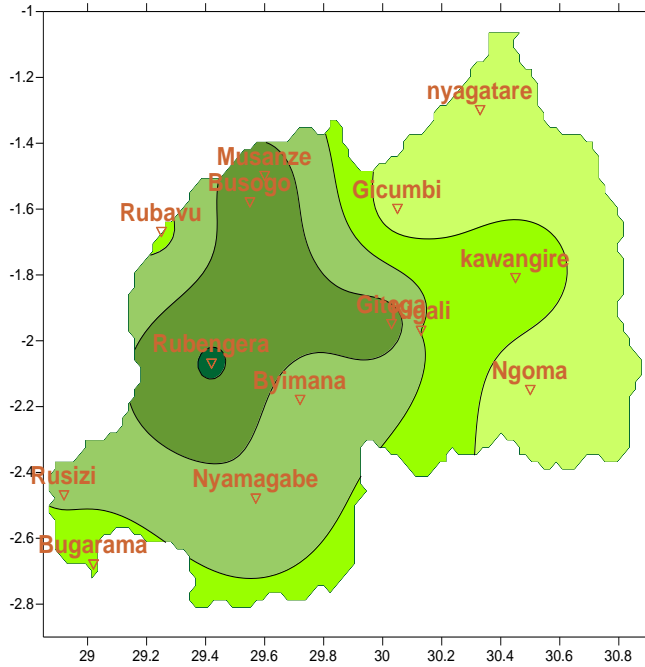
Igiteranyo cy’imvura kuri buri bupimiro (muri mm)

Ubupimiro	Kanama Deka3	Imvura ya Kanama 2016	Imvura isanzwe igwa muri Kanama
Kigali	NT	13.7	30
Rusizi (Kamembe)	NT	15.7	30
Rubavu (Gisenyi)	NT	11.1	30
Nyamagabe (Gikongoro)	NT	20.1	17
Ngoma (Kibungo)	NT	0	28
Gicumbi (Byumba)	0	0	19
Busogo	NT	26.9	9
Bugarama	NT	6.7	21
Musanze (Ruhengeri)	NT	26.9	27
Gitega	NT	27	6
Rubengera	NT	32	8
Byimana	NT	16.5	30
Kawangire	8.2	11.3	30
Nyagatare	NT	0	8

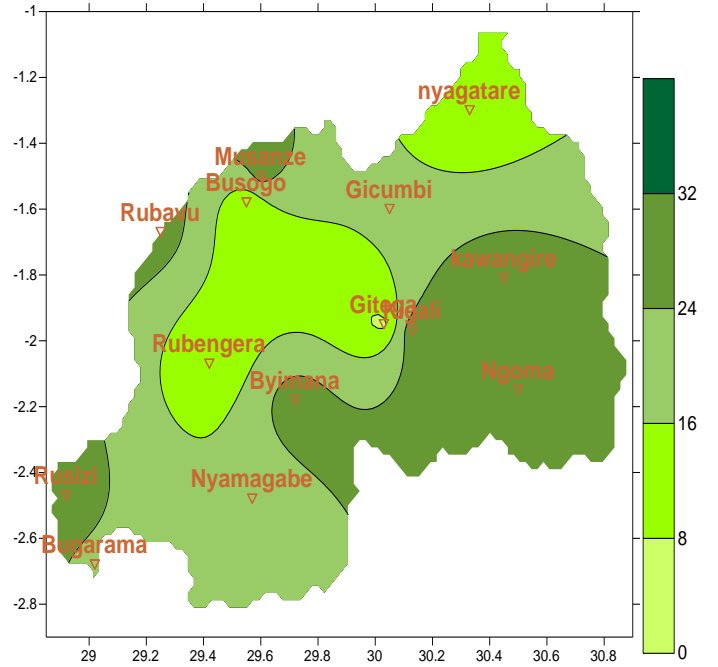


b) **Ubusesenguzi ku mvura yaguye:** Ikarita zikurikira zigereranya imvura yaguye hagati ya 1-31 Kanama 2016, imvura isanzwe igwa muri icyogihe ndetse nimvura yaguye yaguye mu kwezi kwakubanjirije (Nyakanga) muri mm.

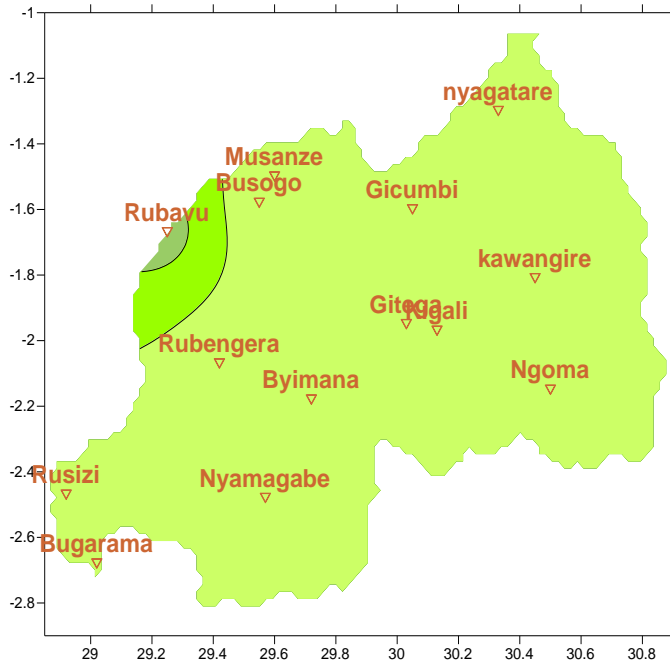
**Ikarita ya1: Imvura yaguye 1–31 Kanama 2016**



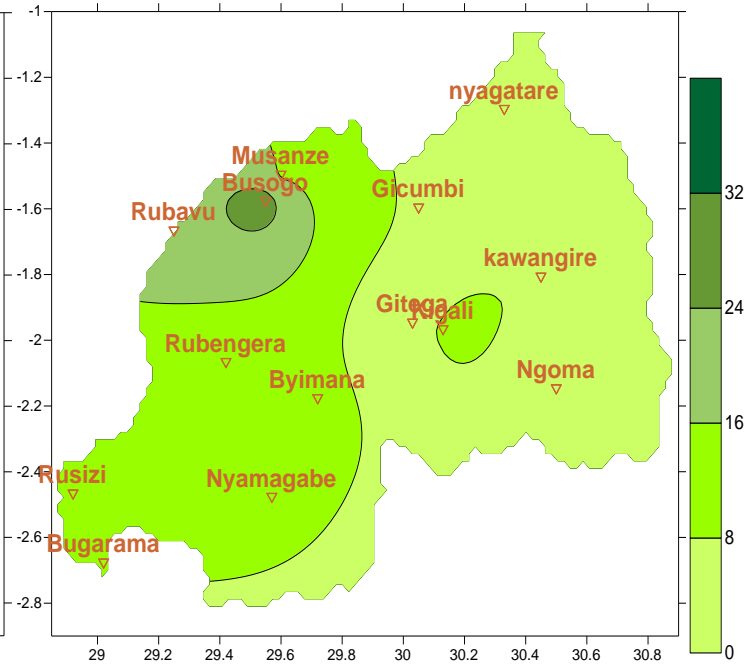
**Ikarita ya2: Imvura isanzwe igwa hagati ya 1-31 Kanama**



**Ikarita ya3: Imvura yaguye 1–31 Nyakanga 2016**



**Ikarita ya4: Imvura isanzwe igwa hagati ya 1-31 Kanama**



## II. Uko imvura yaguye hirya no hino mu gihugu hagati ya 1-31 Kanama 2016 mu buryo burambuye

### a) Intara y'i Burasirazuba

Ubupimiro bwose bwakoreshejwe bwerekanye imvura nke ugereranyije n'isanzwe igwa (nkuko **ikarita ya1&2** zibyerekana); Imvura yaguye muri Kanama iri mu kigero kimwe n'iyabonetse muri Nyakanga (**ikarita ya1&3**)

### b) Intara y'a Majyaruguru

Ubupimiro bwa Musanze burerekana imvura iri mu kigero gisanzwe; mu gihe ubwa Busogo bwerekanye imvura irenze isanzwe igwa naho ubwa Gicumbi bukerekana iri muni y'isanzwe igwa (mu kigereranyo rusanze, **ikarita ya1&2** zirerekana imvura yabonetse ariyo isanzwe igwa mu majyaruguru); Tugereranyije **ikarita ya1&3** turabonako habaye ubwiyongere ku ngano y'imvura yabonetse muri Kanama kurusha Nyakanga.

### c) Intara y'a Majyepfo

**Ikarita 1&3** zirerekana igabanuka ry'imvura isanzwe igwa ku bupimiro bwose uretse ubupimiro bwa Nyamagabe bwerekanye imvura ingana na mm20.1 (imvura iri mu kigero cy'isanzwe igwa, ariko ikaba ifite ingano nini ho gato ugereranyije n'ikigereranyo nyacyo cy'isanzwe igwa); Tugereranyije **ikarita ya1&3** turabonako habaye ubwiyongere ku ngano y'imvura yabonetse muri Kanama kurusha Nyakanga.

### d) Intara y'i Burengerazuba

Ubupimiro bwa Rubengera bwonyine nibwo mu kwezi kwa Kanama (reba **ikarita ya1&2**). Ubupimiro bwa Rubavu bwerekanye imvura iri muni y'isanzwe igwa ndetse n'igabanuka rigaragara ku mvura yaguye muri Nyakanga (reba **ikarita ya1&3**), mu gihe ubwa Rusizi ndetse n'ubwa Bugarama bwerekanye inyongera y'imvura kuva mu kwezi kwa Nyakanga ujya mu kwezi kwa Kanama ariko butageze ku kigereranyo cy'imvura isanzwe ihaboneka. Mu Ntara y'Uburengerazuba, imvura ntaho yaguye ku kigero kingana gikwiye mu duce hafi ya twose.

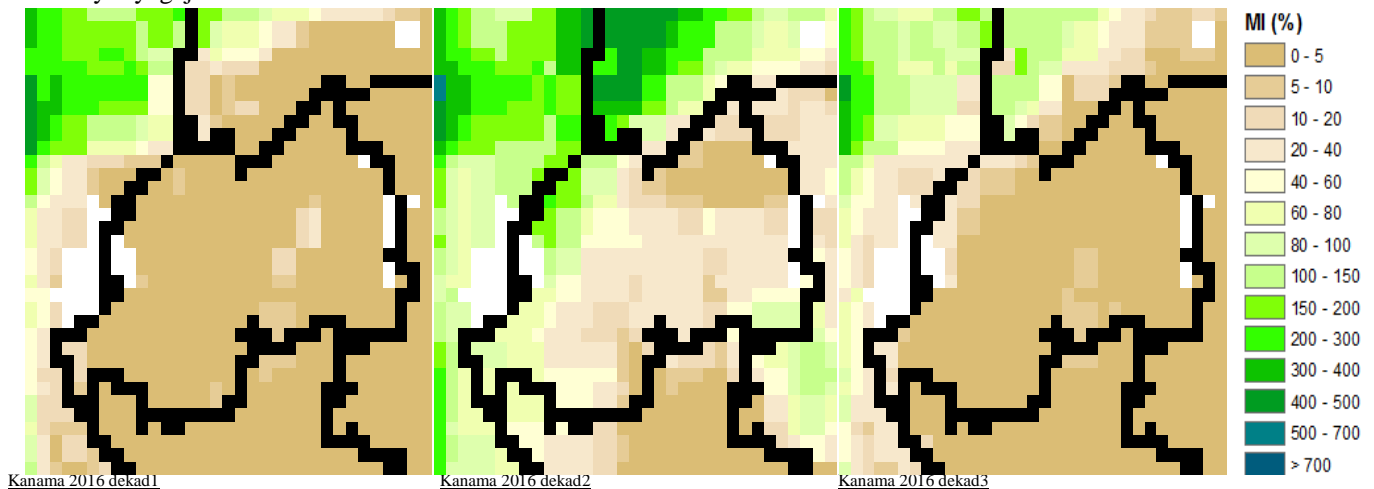
### e) Umujyi wa Kigali

Mu mujyi wa Kigali uhagarariwe n'ubupimiro 2 (Gitega na Kigali), hagaragarako imvura yiyongereye uva muburasirazuba ugana mu burengerazuba bw'aka gace (Kuva muburasirazuba bwabonye muni y'ikigereranyo n'uburengerazuba bwaho bwabonye hejuru y'igipimo gisanzwe kiboneka muri aka gace).

## III. Ingaruka ku Buhinzi

Fig 2: Ububobere bw'ubutaka, amafoto y'icyogajuru.

Ifoto y'icyogajuru ku buhehere bw'ubutaka



“Kanama 2016 dekad2” yerekana ubwiyongere buke k’ububobere bw’ubutaka ugereranyije na “Kanama 2016 deka1”; mu gihe “Kanama 2016 deka3” yagaragayemo igihe kirekire cy’izuba bigatuma ubutaka bwumuka mugasubira bukajya kwitwara nkuko bwari bumeze muri dekad1; ibi birerekana n’imvura yabuze ku bupimiro bw’ibindi mu gihugu (reba **imbonerahamwe ya1**). Mu bice byose byo mu gihugu, igipimo cy’ububobere kiri muni ya 50% (reba **Kanama 2016 dekad3**); ububobere butabereye ibihingwa byinshi cyane cyane ibikenera ingano nyinshi y’amazi. Iyi minsi 10 ya mbere y’ukwezi kwa Nzeri, hataganijwe ubwiyongere bw’ibicu mu gihugu hose, bizatanga imvura iri muni y’iyo dusanzwe tubona kugeza kuyo dusanzwe tubona muri icyo gihe. Abahinzi baragirwa inama yo gutegura imirima yabo ndetse no guteganya imfasha buhinzi (Kubika amazi no kwuhira) muri iki gihembwe A-cy’ihinga tugiye gutangira

#### **IV. Iteganyagihe**

Kuva taliki 1-10 Nzeri 2016, ibicu bizava mukuba bike byiganze mu gihugu hose ndetse n'ubwiyongere ku mvura nke kugeza ku mvura iringaniye; ubwiyongere buzagaragara kuva mu Burasirazuba ugana mu Burengerazu ndetse no kuva mu Majyepfo ugana mu Majyaruguru

**N.B:** Iri teganyagihe rigomba kwifashishwa hagenda kurisohoka buri muni, iry'iminsi 3 ndetse n'iry'iminsi 7 ritangwa n'Ikigo cy'Ubumenyi bw'Ikirere mu ishamba ry'Iteganyagihe