

**Highlights:**

- **The cumulative rainfall** for February\_2017 was generally within the normal range except for Nyagatare which recorded rainfall which was a half of the Long Term Mean (LTM).
- **A progressive increase in soil moisture** was observed across the country.
- The rainfall during March\_2017 is expected to be **higher than what was received in February and widely distributed** across the country.

**I. Introduction**

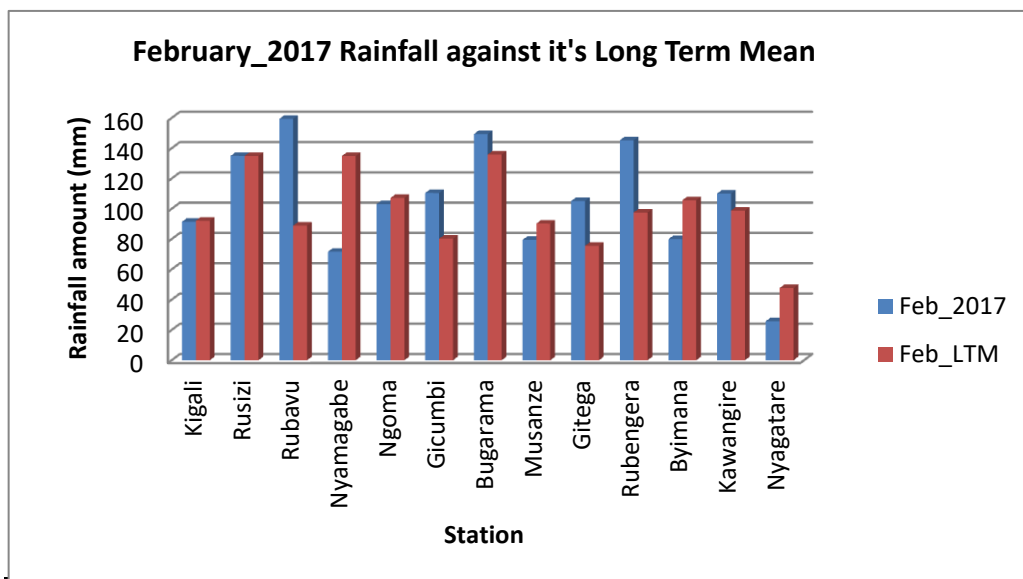
The most northeastern (Nyagatare) and the southern part (Nyamagabe) of Rwanda during the month of February\_2017 recorded rainfall which was below the LTM; other parts of the country recorded rainfall which was within the range of LTM but stations like Rubavu, Gicumbi, Bugarama, Gitega, Rubengera and Kawangire recorded rainfall which was slightly higher above the LTM.

a) The table and histogram below indicates the rainfall recorded during February\_2017:

**Cumulative rainfall (in mm) recorded at different stations**

Station	Feb_2017	Feb_LTM
Kigali (Kanombe)	91.5	92.2
Rusizi (Kamembe)	135	134.9
Rubavu (Gisenyi)	159.4	88.9
Nyamagabe (Gikongoro)	71.7	134.9
Ngoma (Kibungo)	103.1	107.2
Gicumbi (Byumba)	110.5	80.3
Bugarama	149.4	135.9
Musanze (Ruhengeri)	79.5	90.3
Gitega	105.2	75.6
Rubengera	145.3	97.6
Byimana	80	105.7
Kawangire	110.1	98.8
Nyagatare	25.8	47.7

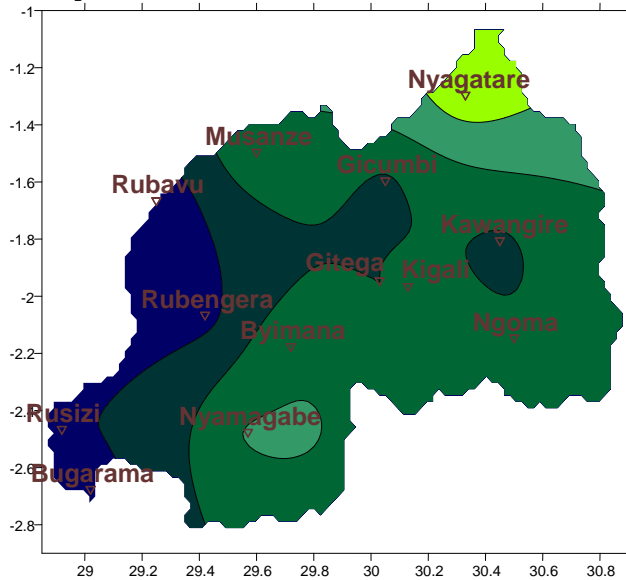
Table1



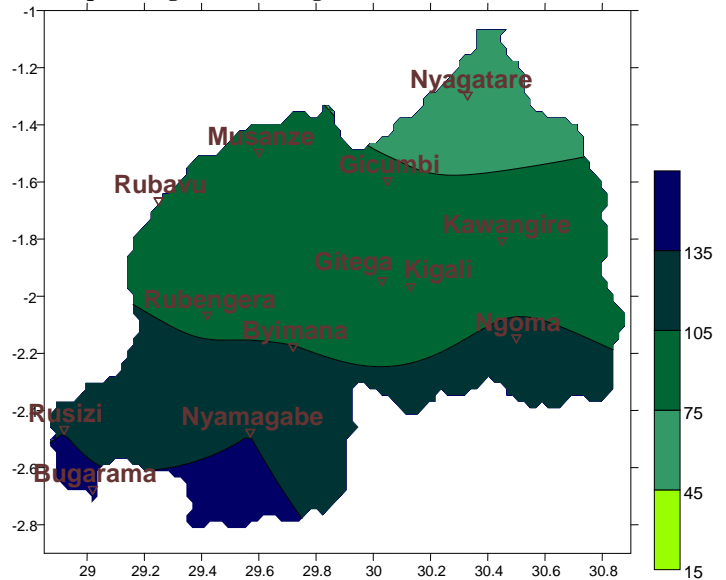
Plot1

b) **Rainfall analysis:** The maps “**Map 1 and 2**” below show the cumulative rainfall recorded during February\_2017 and its long term mean (LTM) of cumulative rainfall. The maps “**map 3 and 4**” show the cumulative rainfall recorded during January\_2017 and its LTM of cumulative rainfall.

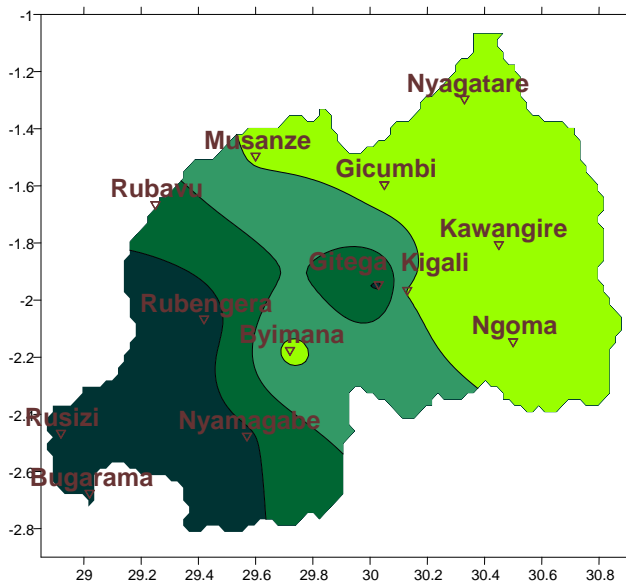
**Map1: Total Rainfall (mm): Feb\_2017**



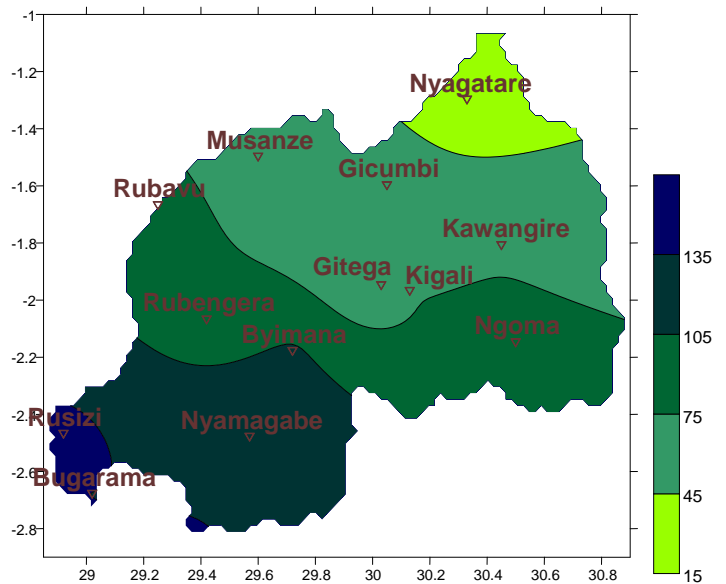
**Map2: Long Term Average Rainfall (mm): Feb\_LTM**



**Map3: Total Rainfall (mm): Jan\_2017**



**Map4: Long Term Average Rainfall (mm): Jan\_LTM**



## II. Detailed observed rainfall during the February\_2017

Cumulative rainfall for February\_2017 was suppressed in the most northeastern tip (Nyagatare) and the southern part (Gikongoro) of Rwanda while the western and central parts performance was good within the Long Term Mean (see **Map1&2**). The month of January\_2017; showed in the maps above the rainfall recorded especially in eastern parts of the country was generally below the LTM (see **Map3&4**)

**a) Eastern Province**

The rainfall recorded was generally within the normal range except for cases like Kawangire station which recorded above LTM and Nyagatare station which recorded slightly below LTM (see **Table1** and **Map1&2**)

**b) Northern Province**

The stations of the Northern Province recorded rainfall that was normal to above (see **Table1** and **Map1&2**)

**c) Southern Province**

Most of stations of the Southern Province recorded rainfall that was normal to below (see **Table1** and **Map1&2**)

**d) Western Province**

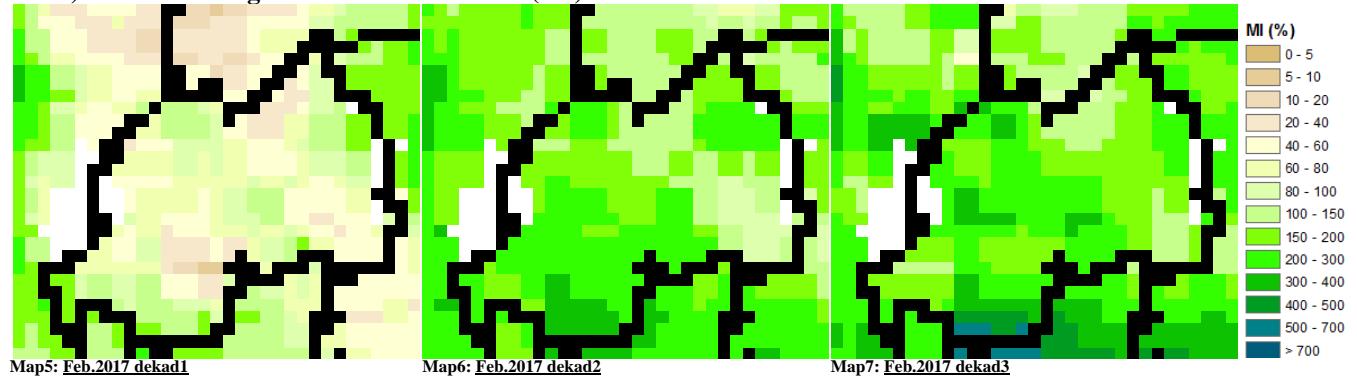
Nearly all the stations of the Western Province recorded rainfall that is normal to above (140mm; see **Table1** and **Map1&2**)

**e) Kigali City**

The central part had rainfall pattern that was increasingly westwards (see **Table1** and **Map1&2**)

**III. Agricultural impact.**

**a) Satellite images: Soil Moisture Index (MI)**



During February\_2017 the satellite derived moisture index showed an increased for dekad2 and dekad3 as results of rainfall events that occurred during the month of February (**Map 5, 6&7**; indicate the first, second and third dekad respectively)

The distribution of rains during March\_2017 is expected to increase across the country; Farmers are advised to take an opportunity of the prevailing wet conditions throughout the country.

**Rainfall forecast for March\_2017**

We expect a steady increase of rainfall amount spreading country wide.

**Kigali City**; Will experience rainy conditions throughout this month of March\_2017

**Eastern Region**; Will experience rainy conditions throughout the month of March especially central and south.

**Western Region**; Will experience rainy conditions throughout the month that which may increase to above normal conditions especially in the central and south.

**Northern region**; Will experience rainy conditions throughout the month.

**Southern Region**; Will experience rainy conditions throughout the month especially the western parts.

**N.B:** This forecast should be used in conjunction with the daily (24-hour), Three (3), Five (5) and Seven (7) days forecasts issued by the Rwanda Meteorology Agency (Meteo Rwanda)