



Highlights:

- **The cumulative rainfall** for dekad2_February_2018 was enhanced in the northern and western but below the Long Term Mean (LTM) in central, southern and eastern parts of the country.
- The rainfall that was received during second dekad of Feb_2018, increased soil moisture over the country more especially in northern and western parts of the country.
- The rain during dekad3_February_2018 is expected to be within the range of LTM to below except for the northern and western parts of the country where rains will be slightly enhanced.

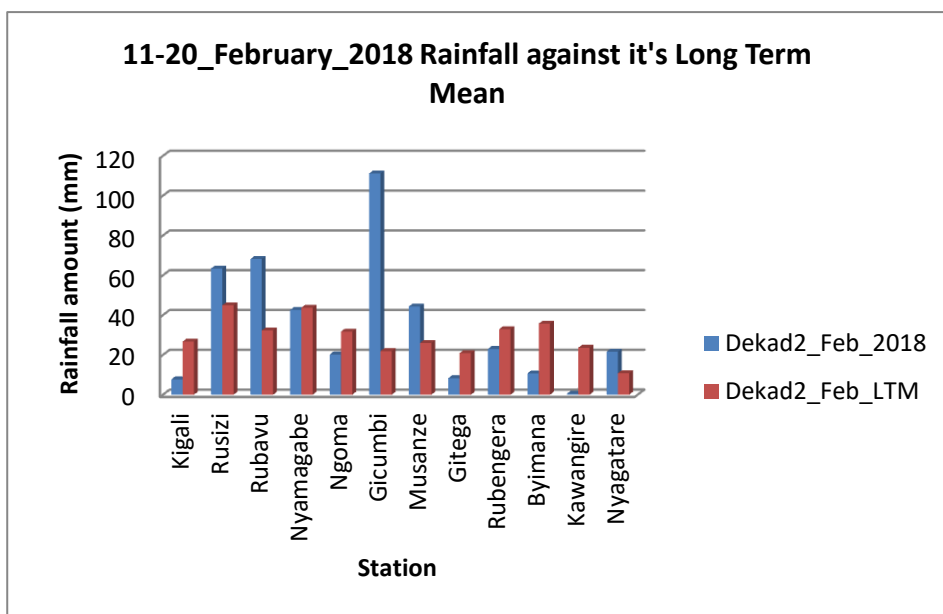
Introduction

The start of the rainfall for march to May 2018 season was marked by the excessive rainfall over the northern at Gicumbi station and slightly higher than the LTM at Rusizi, Musanze and Rubavu stations; while the central, southern and eastern observed rainfall which was below the LTM.

a) The table and histogram below indicates the rainfall recorded during dekad2_January_2018:

Cumulative rainfall (in mm) recorded at different stations

Station	Dekad 2_Feb_2018	Dekad2_Feb_LTM
Kigali	7.7	26.7
Rusizi (Kamembe)	63.4	44.9
Rubavu (Gisenyi)	68.2	32.3
Nyamagabe (Gikongoro)	42.6	43.7
Ngoma (Kibungo)	20.2	31.7
Gicumbi (Byumba)	111.2	21.9
Musanze (Ruhengeri)	44.3	26.0
Gitega	8.3	20.9
Rubengera	23.0	32.9
Byimana	10.7	35.7
Kawangire	0.5	23.6
Nyagatare	21.6	10.8

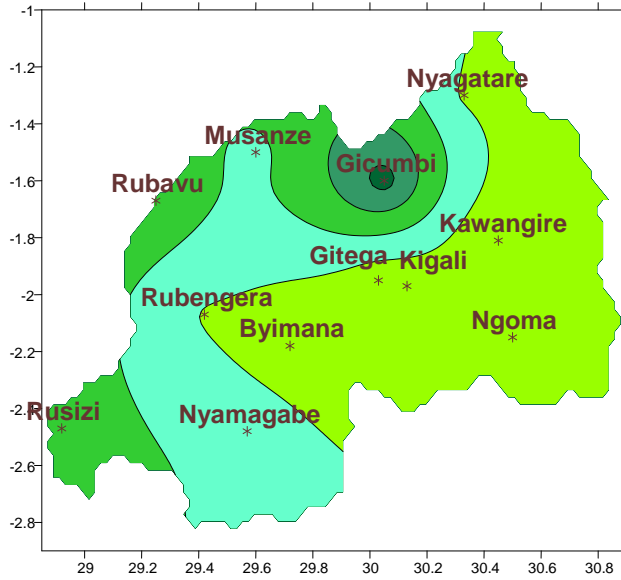


Plot1

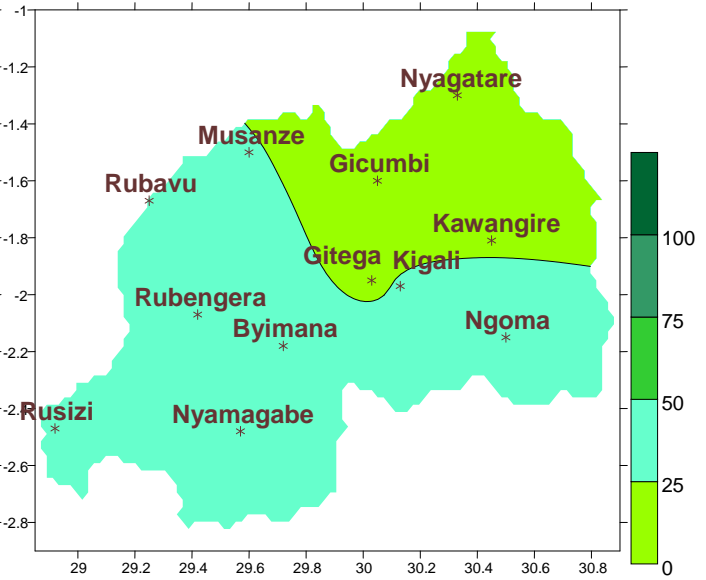
Table1

b) **Rainfall analysis:** The maps “Map 1 and 2” below show the cumulative rainfall recorded during dekad2_February_2018 and cumulative Long Term Mean (LTM) rainfall for the same period respectively. The maps “map 3 and 4” show the cumulative rainfall recorded during dekad1_February_2018 and cumulative LTM for the same period respectively.

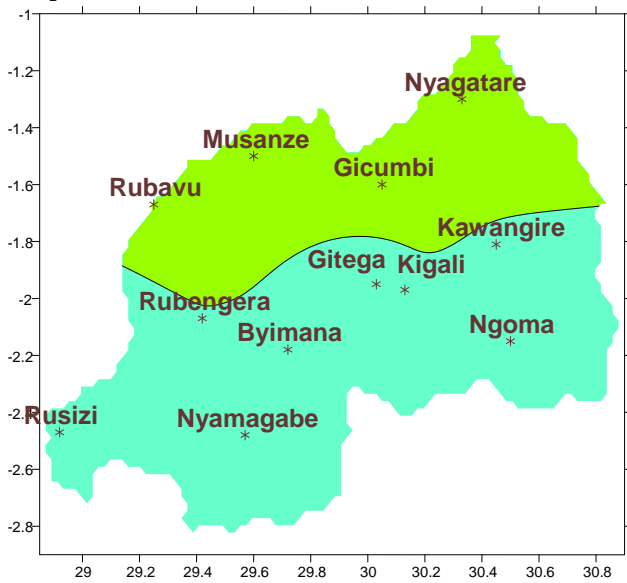
Map1: Total Rainfall (mm): dekad2_Feb_2018



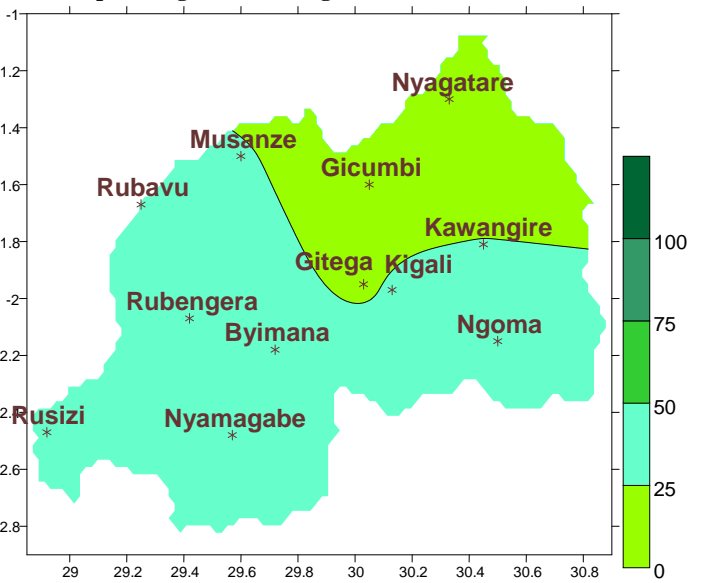
Map2: Long Term Average Rainfall (mm): dekad2_Feb_LTM



Map3: Total Rainfall (mm): dekad1_Feb_2018



Map4: Long Term Average Rainfall (mm): dekad1_Feb_LTM

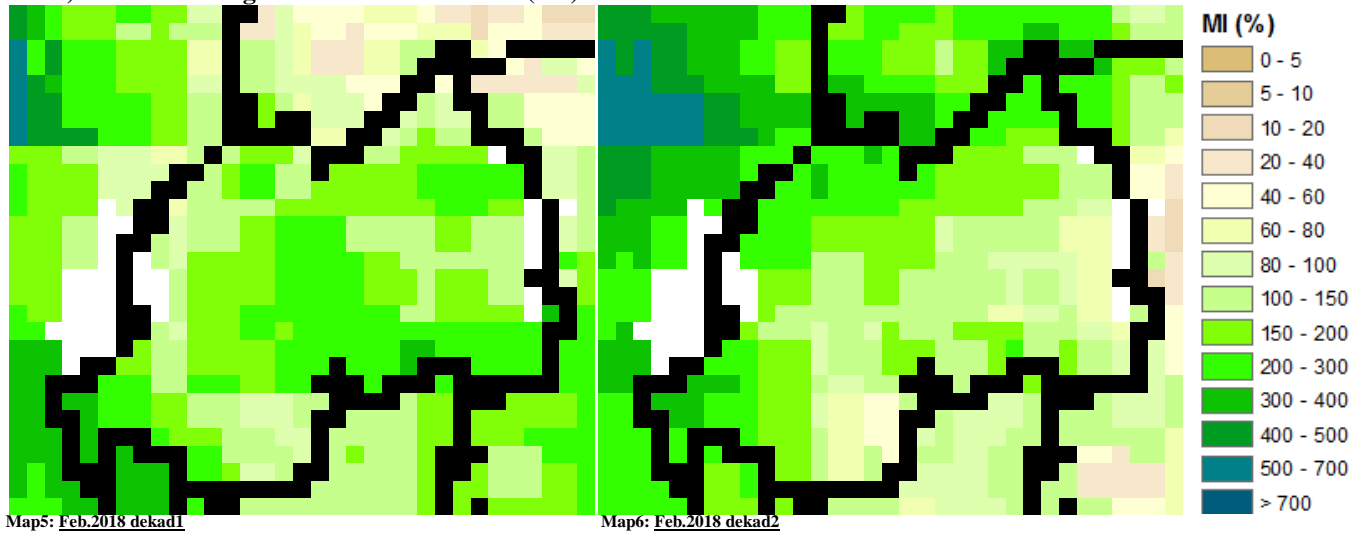


I. Detailed observed rainfall during the dekad2_February_2018

The start of the rainfall for March to May 2018 season was marked by the excessive rainfall over the northern at Gicumbi station which recorded 111.2mm of rainfall that was 5 times higher than the LTM and even stations from other parts of the country. The stations also in Rusizi, Rubavu and Musanze also recorded rainfall which was slightly above the LTM; the eastern, central and southern parts of the country recorded rainfall which was within to below LTM range. (see Map1&2); while for dekad1_February_2018, the rainfall recorded was generally within the range of LTM (see Map3&4).

II. Agricultural impact.

a) Satellite images: Soil Moisture Index (MI)



During dekad1 to dekad2_February_2018, the satellite derived moisture index indicated increased moisture content across the country due to the rainfall conditions prevailed for the two consecutive dekads (see **Map 5&6**)

b) Rainfall forecast for dekad3 February_2018

The distribution of rains during dekad3_February_2018 is expected to be spatially distributed across many parts of the country since the rain season for March to May 2018 has started with western and northern registering slightly enhanced rains compared to other parts.

N.B: This forecast should be used in conjunction with the daily (24-hour), Three (3), Five (5) and Seven (7) days forecasts issued by the Rwanda Meteorology Agency (Meteo Rwanda)