



Ingingo z'ingenzi:

- o **Igiteranyo cy'imvura** yabonetse mu gice cya kabiri (kuva taliki 11-20) Gashyantare_2019; cyagaragaje imvura yabaye nyinshi mu majyepfo y'Uburengerazuba naho ahandi mu gihugu ikaba nkeya
- o Amashusho y'icyogajuru yerekanako mu gice cya kabiri ubutaka bwabuze ubuhehere ugereranyije n'igice cya mbere (kuva taliki 01-10) Gashyantare_2019 kubera iminsi y'imicyo yagaragaye mu minsi ya nyuma y'icyo gice cya kabiri
- o **21-28_Gashyantare_2019; hateganijwe imvura iziyongera ugereranyije n'iyabonetse** mu gice cya 2 cya Gashyantare_2019; ikazaba nyinshi cyane mu misozi miremire y'igihugu.

I. Iriburiro

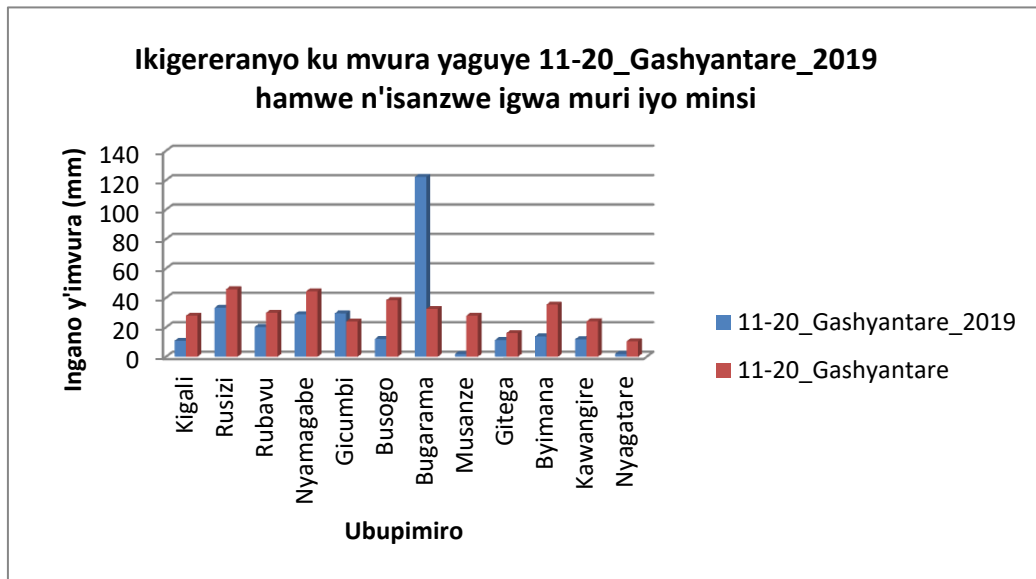
Igiteranyo cy'imvura yabonetse mu mataliki ya 11-20_ Gashyantare_2019; cyagaragaje imvura yabaye nyinshi mu majyepfo y'Uburengerazuba naho ahandi mu gihugu ikaba nkeya.

- a) Imbonerahamwe zikurikira zirerekana ikigereranyo ku mvura yaguye hagati ya 11-20_Gashyantare_2019 ndetse n'imvura dusanzwe tubona muri iyo minsi kuri buri bupimiro.

Igiteranyo cy'imvura kuri buri bupimiro (muri mm)

Ubupimiro	11-20_Gashyantare_2019	11-20_Gashyantare
Kigali	10.9	27.9
Rusizi	33.3	45.9
Rubavu	20.3	29.9
Nyamagabe	28.9	44.5
Gicumbi	29.5	24.0
Busogo	12.1	38.5
Bugarama	122.3	32.5
Musanze	1.8	27.9
Gitega	11.4	16.1
Byimana	13.9	35.5
Kawangire	11.9	24.1
Nyagatare	1.91	10.5

Imbonerahamwe ya

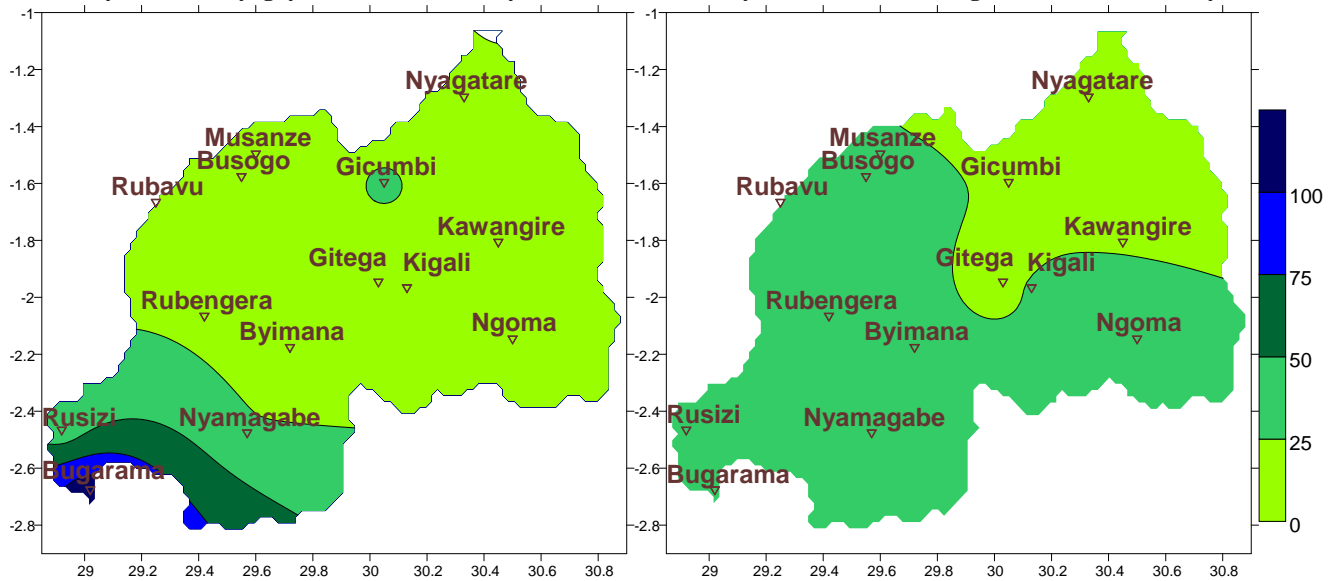


Igishushanyo 1

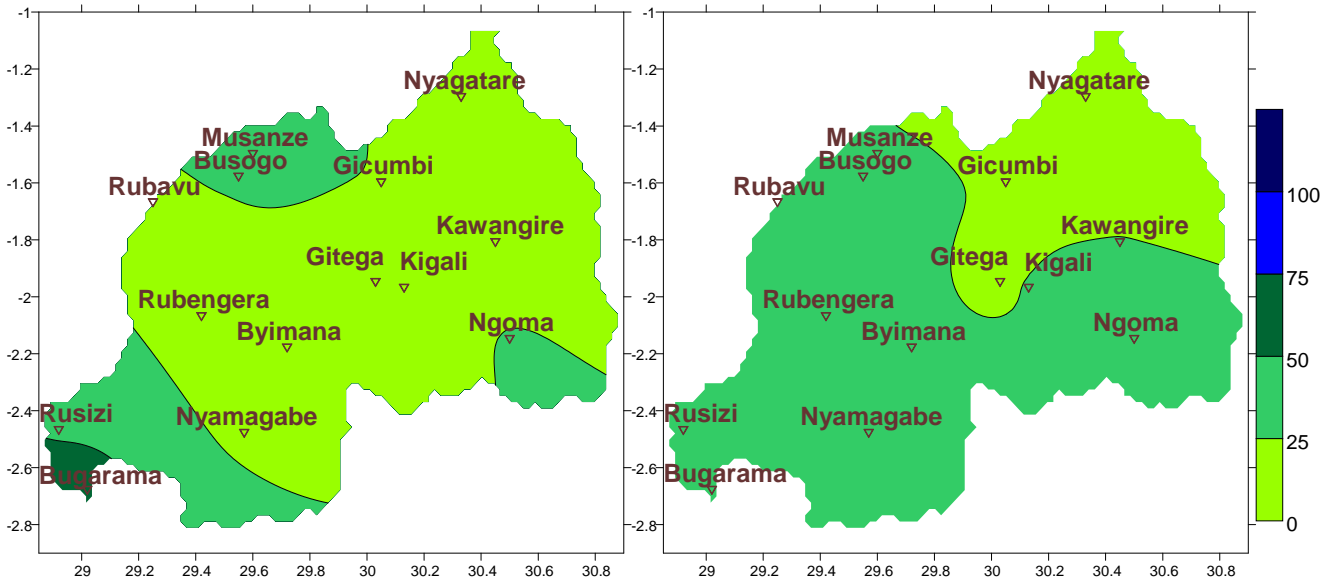
b) **Ubusesenguzi ku mvura yaguye:** Ikarita zikurikira (iya **1&2**) zigereranya igiteranyo cy'imvura yaguye hagati ya 11-20_Gashyantare_2019 ndetse n'imvura isanzwe igwa muri iyo minsi.

Naho ikarita **3&4** zikerekana igiteranyo cy'imvura yaguye hagati ya 01-10_Mutarama_2019 ndetse n'isanzwe igwa muri ayo mataliki

Ikarita ya1: Imvura yaguye (mm): 11-20_Gashyantare_2019 **Ikarita ya2: Imvura isanzwe igwa (mm): 11-20_Gashyantare**



Ikarita ya1: Imvura yaguye (mm): 01-10_Gashyantare_2019 **Ikarita ya2: Imvura isanzwe igwa (mm): 01-10_Gashyantare**

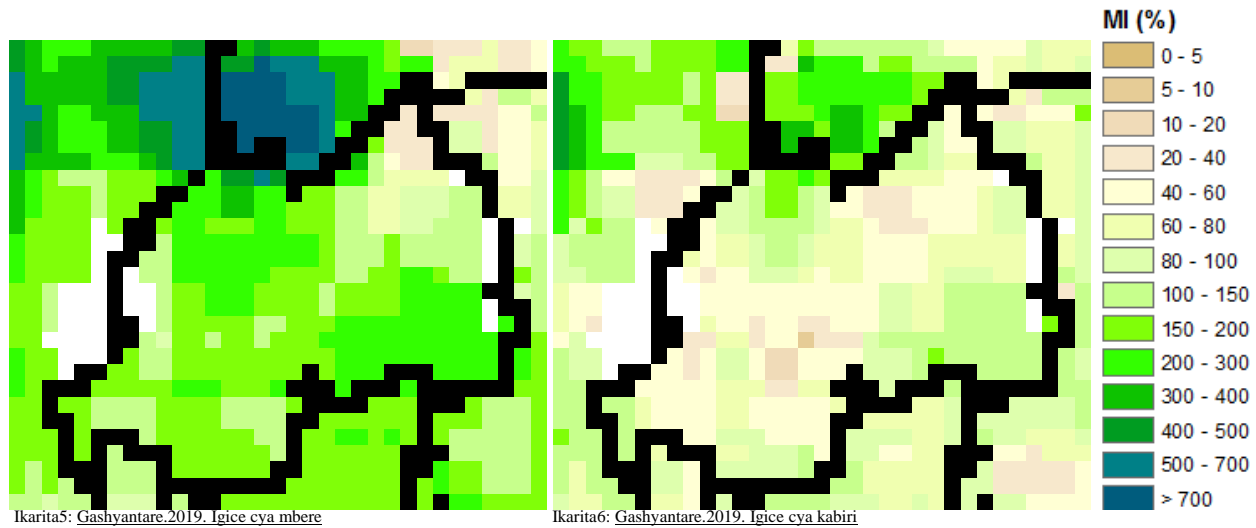


II. Uko imvura yaguye hirya no hino mu gihugu mu mataliki ya 11-20_Gashyantare_2019 mu buryo burambuye

Igiteranyo cy'imvura yabonetse mu mataliki ya 11-20_Gashyantare_2019; cyagaragaje imvura yabaye nyinshi mu majyepfo y'Uburengerazuba naho ahandi mu gihugu ikaba nkeya aho ku bupimiro bwa Bugarama ariho habonetse imvura nyinshi ingana na mm122.3 naho amajyaruguru cyane mu Majyaruguru y'Uburasirazuba haboneka nkeya cyane ugereranyije n'ahandi mu gihugu (reba **Ikarita1&2** n'**Imbonerahamwe1**); naho igiteranyo cy'imvura yabonetse mu mataliki ya 01-10_Gashyantare_2019; cyagaragaje imvura nke henshi mu gihugu uretse mu majyepfo y'Uburengerazuba ndetse n'amajyaruguru y'Uburengerazuba aho habonetse imvura nyinshi kurusha ahandi ndetse ikanaba nyinshi ku yari isanzwe imenyerewe muri utwo duce muri iyo minsi (reba **Ikarita3&4**)

III. Ingaruka ku Buhinzi

a) Ububobere bw'ubutaka (amafoto y'icyogajuru)



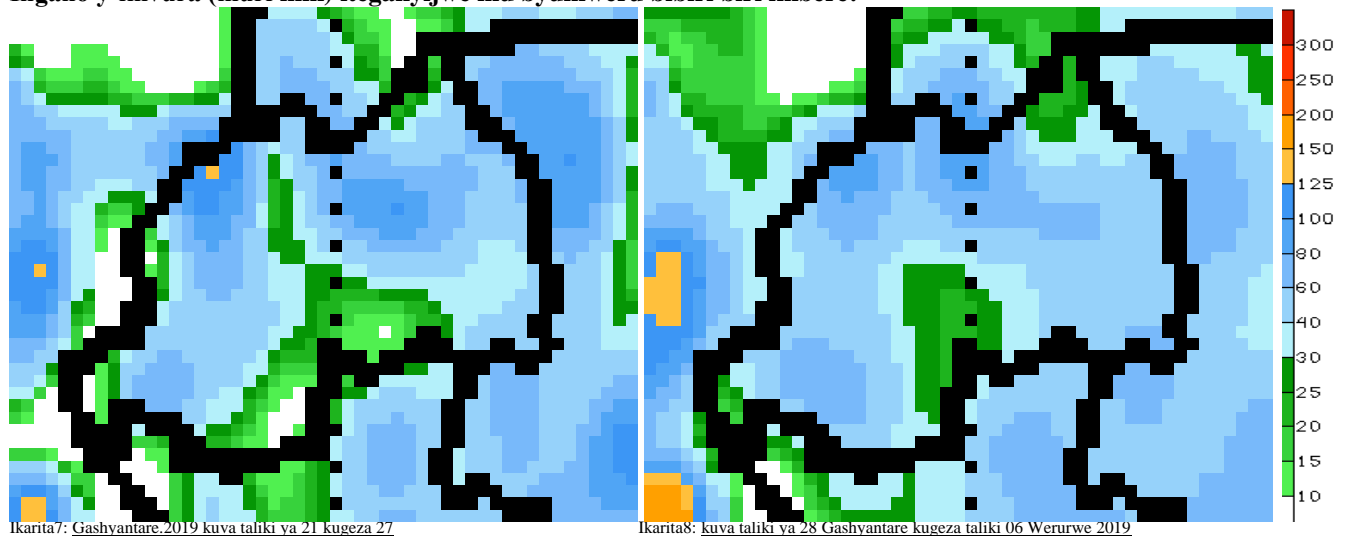
Tugeranyije igice cya mbere ndetse n'icya kabiri bya Gashyantare_2019; amashusho y'icyogajuru yerekana ukugabanuka ku buhehere bw'ubutaka mu gice cya kabiri cy'uku kwezi kubera iminsi yanyuma y'icyo gice yagaragaye ko ari iy'imicyo hose mu gihugu (reba **Ikarita 5&6**)

b) Iteganagihe ry'igice cya gatatu Gashyantare_2019

Mu gice cya gatatu cya Gashyantare_2019 (kuva taliki 21 -28); hateganijwe imvura izaba nyinshi ku yabonetse mu gice cya 2 cya Gashyantare_2019; ikazaba nyinshi cyane mu misozi miremire y'igihugu.

- **Umujyi wa Kigali:** hateganijwe kuboneka imvura iri ku kigero cya mm60 kugeza kuri mm200 mu byumweru bibiri
- **Intara y'Iburasirazuba:** hateganijwe kuboneka imvura iri ku kigero cya mm20 kugeza kuri mm160 mu byumweru bibiri
- **Intara y'Amajyepfo:** hateganijwe kuboneka imvura iri ku kigero cya mm20 kugeza kuri mm160 mu byumweru bibiri
- **Intara y'Iburengerazuba:** hateganijwe kuboneka imvura iri ku kigero cya mm60 kugeza kuri mm200 mu byumweru bibiri
- **Intara y'Amajyaruguru:** hateganijwe kuboneka imvura iri ku kigero cya mm60 kugeza kuri mm200 mu byumweru bibiri

Ingano y'imvura (muri mm) iteganyijwe mu byumweru bibiri biri imbere:



N.B: Iri teganyagihe rigomba kwifashishwa hagendewe kurisohoka buri muni (buri masaha 24), iry'iminsi itatu (3), itanu (5) ndetse n'iry'iminsi irindwi (7) ritangwa n'Ikigo cy'Ubumenyi bw'Ikirere (Meteo Rwanda)