



SEASONAL OUTLOOK FOR JUNE TO AUGUST (JJA 2021)

Seasonal outlook and expected drivers for JJA (June to August) 2021.

June to August is a major dry season for most parts of the country. The global Models indicate neutral conditions in the central tropical pacific sea surface temperatures throughout the season as well as upper air circulation patterns. The forecast indicates that the country will experience near normal to slight above normal rainfall over northwestern parts during June to August 2021 season.

The downscaled seasonal forecast for each zone is as follow:

- Rainfall ranging between 150-175 millimeters is expected over northern parts of Rubavu, Musanze and Burera districts
- Rainfall ranging between 125-150 millimeters is expected in the southern parts of Rubavu, western parts of Nyabihu, central parts of Musanze and Burera districts.
- Rainfall ranging between 100-125 millimeters is expected in the northern parts of Ngororero and Rutsiro, and central parts Nyabihu districts in the western province.
- Rainfall ranging between 75-100 millimeters is expected in southern parts of Rutsiro and Nyamasheke, central parts of Ngororero and northern parts of Rusizi in the Western province, central parts of Gakenke and northern parts of Burera, Gicumbi and Rulindo districts in the Northern province, southern parts of Nyaruguru district in the southern province and extreme north western parts of Nyagatare in the Eastern province.
- Rainfall ranging between 50-75 millimeters is expected in Karongi, northern parts of Nyamasheke, southern parts of Ngororero and southwestern parts of Rusizi districts in the Western province, Nyamagabe, northern parts of Nyaruguru, Muhanga and Kamonyi and western parts of Nyanza districts in the Southern province, southern parts of Gicumbi, Gakenke and Rulindo districts in the Northern province, northern parts of Nyagatare and north western parts of Gatsibo districts in the Eastern province and extreme northern parts of Gasabo district in Kigali city.
- Rainfall less than 50 millimeters is expected over Kirehe, Ngoma, Kayonza, Bugesera Rwamagana and eastern parts of Nyagatare and Gatsibo districts in the Eastern province,



most parts of Ruhango, Nyanza and Gisagara districts, western parts of Huye, southern parts of Muhanga and Kamonyi districts in the Southern province; most parts of Kicukiro, Nyarugenge and Gasabo districts in Kigali city.

The figures below indicate the outlook for June to August 2021.

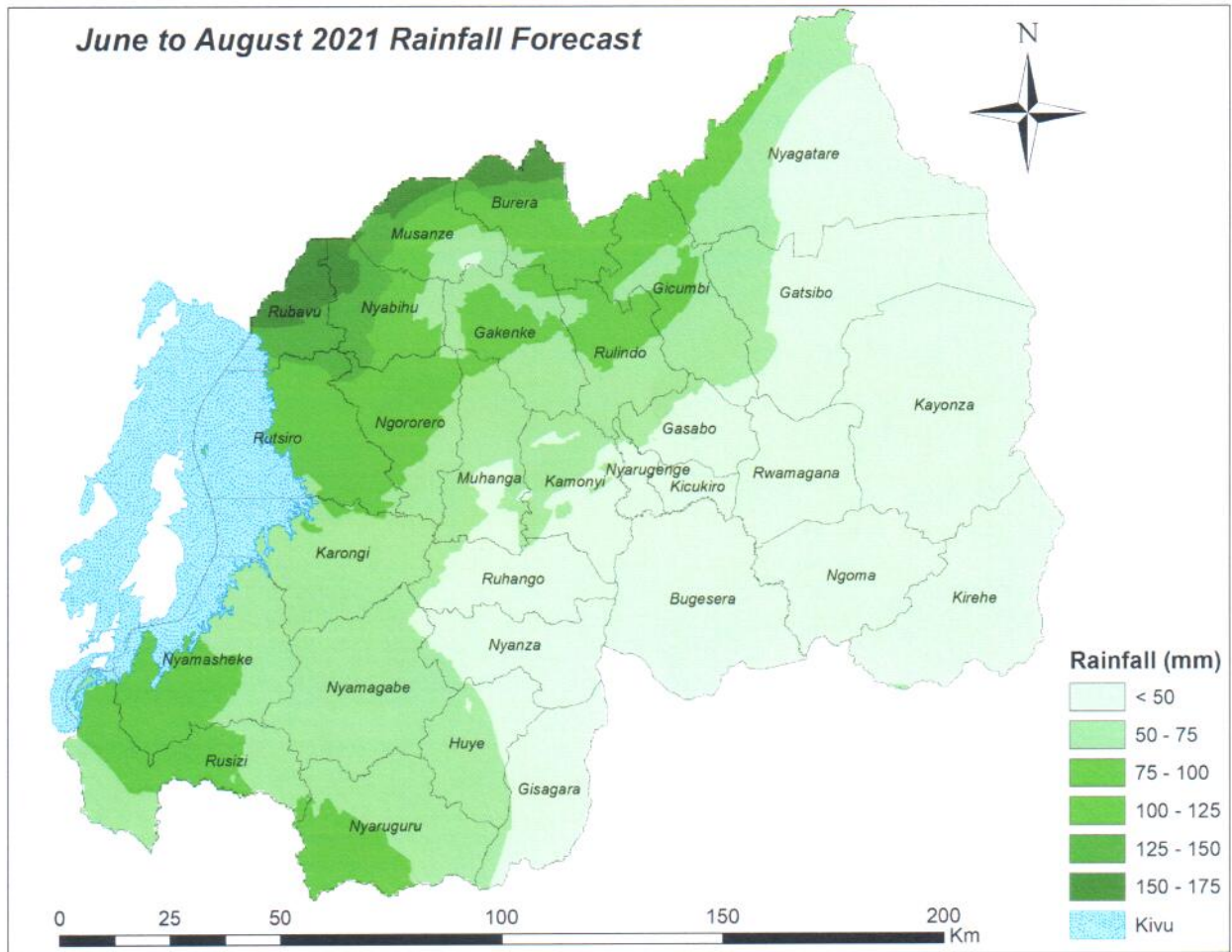


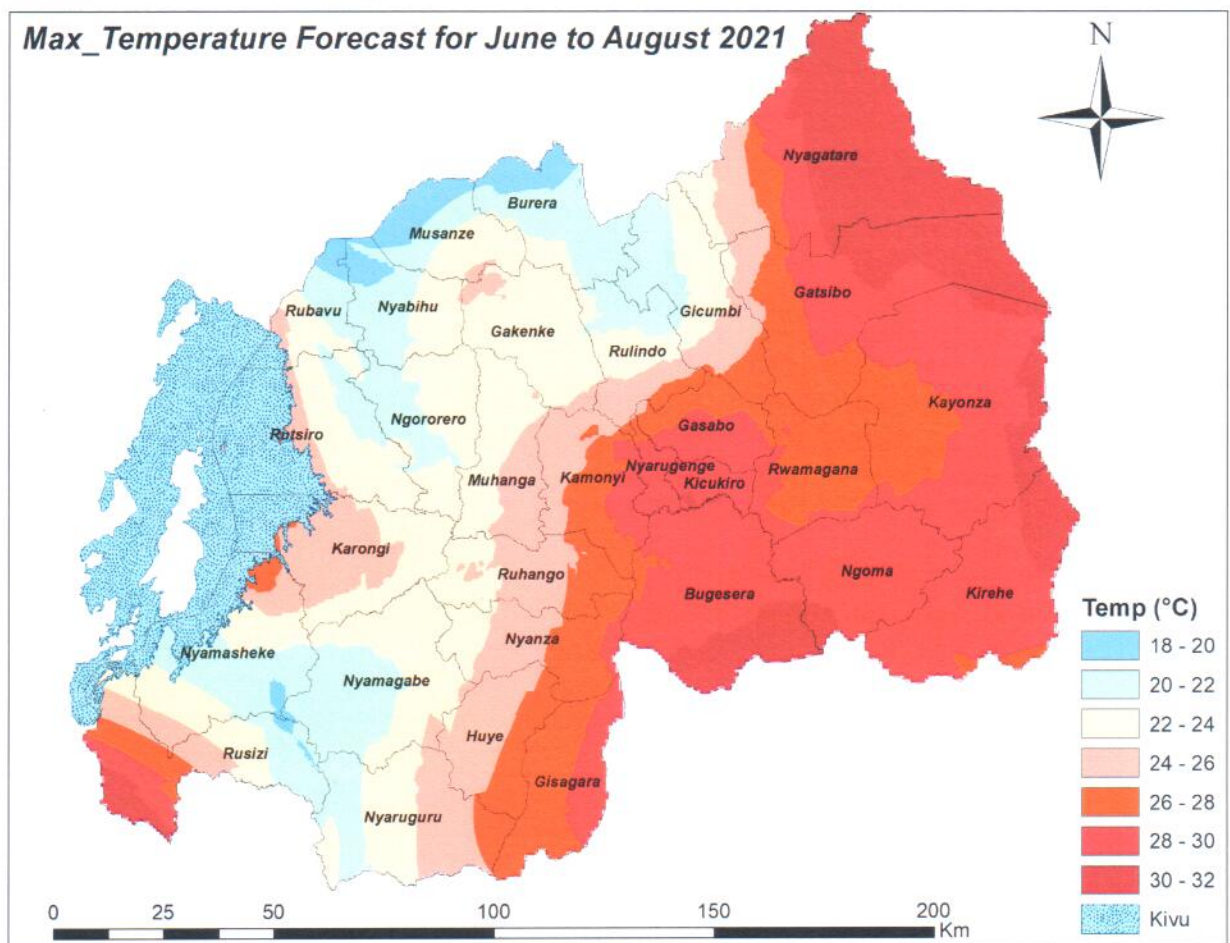
Figure 1: JJA 2021 seasonal rainfall forecast



TEMPERATURE EXPECTED DURING JUNE TO AUGUST 2021

Expected maximum temperature

The Maximum temperature expected will be between 18°C and 32°C (degree Celsius). Eastern province, Kigali city and most parts of the Southern province as well as the low land of Rusizi district parts of Bugarama will be warmer than the rest parts of the country during June to August 2021. The parts of highland area including the Birunga expected maximum temperature will be lower than other parts and vary between 18°C to 22°C.



Figur2: JJA 2021 Maximum Temperature forecast



Expected minimum temperature

The Minimum temperature expected will be between 8°C and 20°C. Volcanoes area in the northwestern region, Western province and Nyungwe National Park will be cooler than the rest parts of the country during June to August 2021. The parts of low land area of Bugarama, Kigali city and most parts of the Eastern province expected to have minimum temperature ranging between 16°C and 18°C.

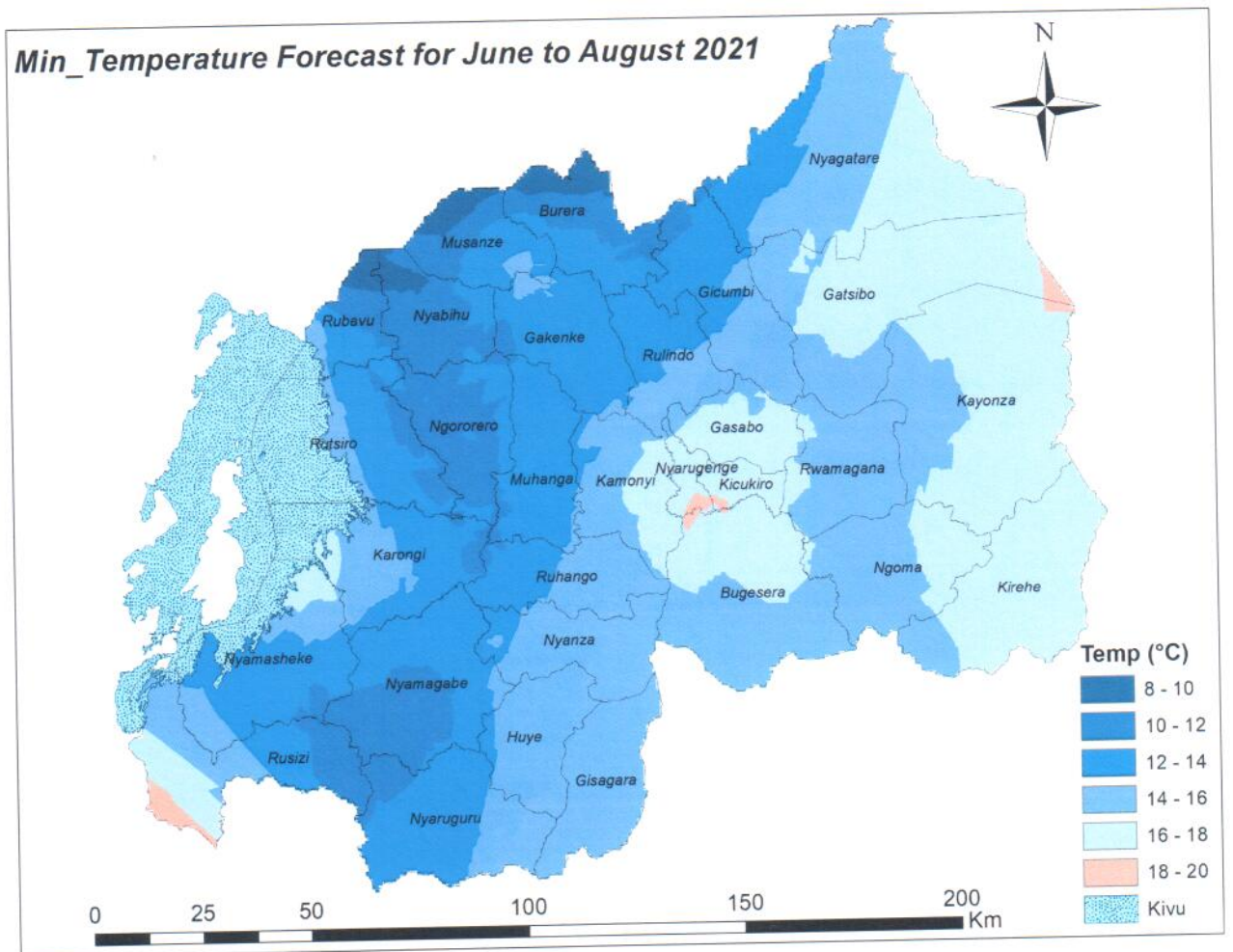


Figure 4: JJA 2021 Minimum Temperature forecast



The expected impacts and advisories

The season rainfall for June to August 2021 normally referred to as season C in Agriculture is useful for farming in marshland areas but the information can be used during harvesting and post-harvest handling activities for season 2021B. We therefore encourage farmers to take advantage of this forecast to maximize inputs in marshlands and avoid losses that should be incurred while harvesting.

The rainfall performance during the season will influence different sectors as follows:

- The good crop performance over localized parts of the country.
- Reduced water levels in rivers.
- Optimize all potential marshlands in the current season with the cultivation of early maturing vegetable crops

N.B This outlook should be used in conjunction with 24-hours, 5-days and 10-days forecasts and regular monthly updates and advisories issued by Rwanda Meteorology Agency.

Kigali, 5th June 2021

GAHIGI Aimable
Director General

