



Highlights:

- **The cumulative rainfall** for January_2018 shows an above normal country wide with high rainfall amount over central and south.
- **The soil is still in favor with wet conditions and the satellite derived soil moisture index (MI) shows high values of MI all over the country.**
- The weather pattern during February_2018 is expected to **wet over the whole country with high values over central, north and west (over the high lands) within the first two dekads and less within the last dekad.**

I. Introduction

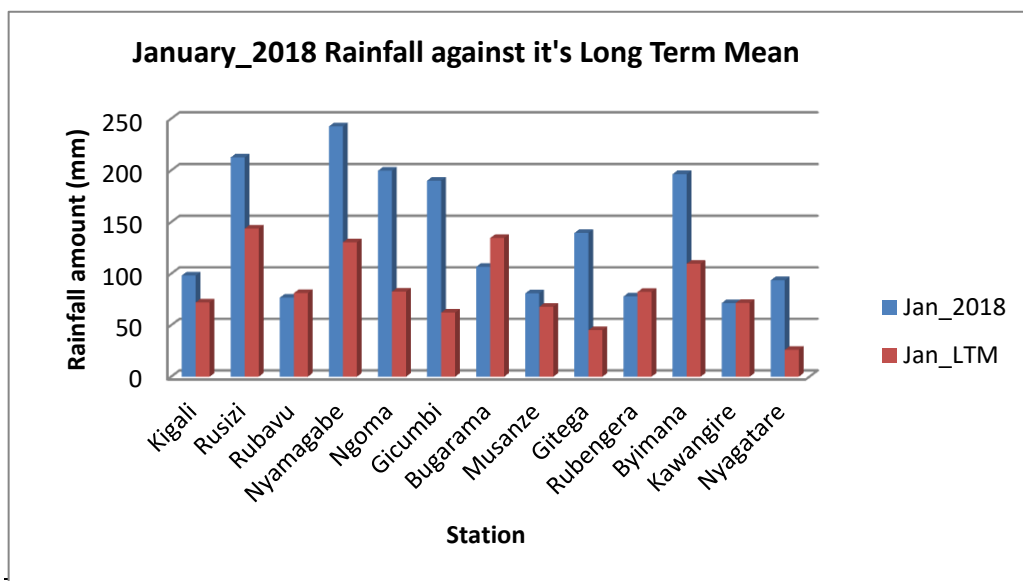
For the January_2018; the rainfall patterns show that the north towards central and the southern part; stretching from the east to the west experienced high rainfall values that exceeded 100mm at most of the stations; elsewhere within the country received rain that is in above normal range compared with the LTM (Long-term Mean)

a) The table and histogram below indicates the rainfall recorded during January_2018:

Cumulative rainfall (in mm) recorded at different stations

Station	Jan_2018	Jan_LTM
Kigali (Kanombe)	98.2	72.1
Rusizi (Kamembe)	212.5	143.8
Rubavu (Gisenyi)	76.8	81.2
Nyamagabe (Gikongoro)	242.5	130.5
Ngoma (Kibungo)	199.7	82.6
Gicumbi (Byumba)	190.1	62.2
Bugarama	106.7	134.7
Musanze (Ruhengeri)	81.0	67.9
Gitega	139.5	45.2
Rubengera	77.9	82.3
Byimana	196.4	109.7
Kawangire	71.5	71.6
Nyagatare	93.7	26.1

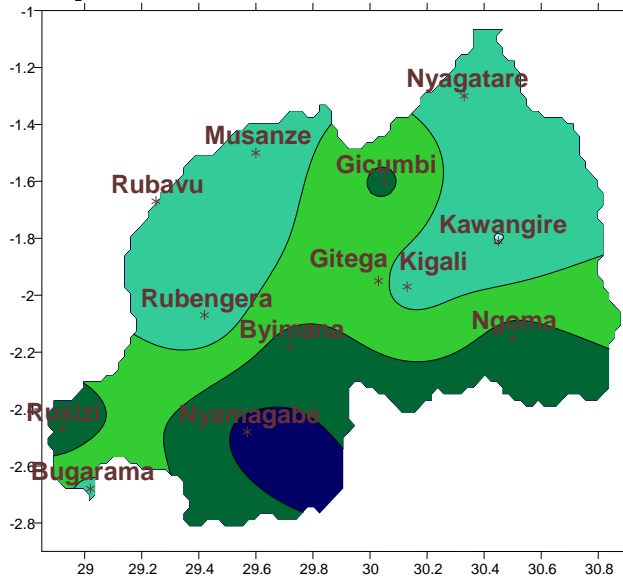
Table1



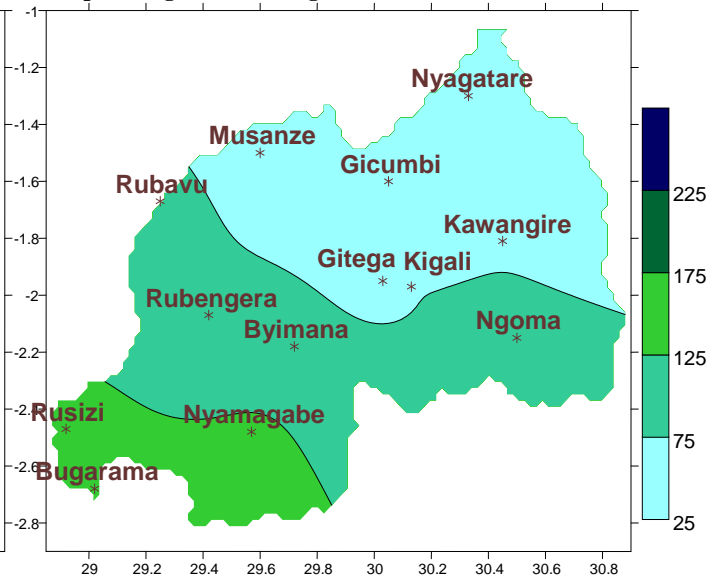
Plot1

b) **Rainfall analysis:** The maps “**Map 1 and 2**” below show the cumulative rainfall recorded during January_2018 and its long term mean (LTM) of cumulative rainfall. The maps “**map 3 and 4**” show the cumulative rainfall recorded during December_2017 and its LTM of cumulative rainfall.

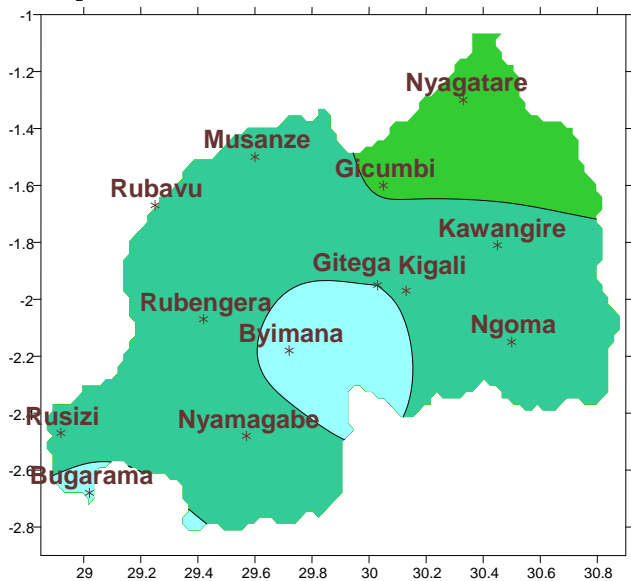
Map1: Total Rainfall (mm): Jan_2018



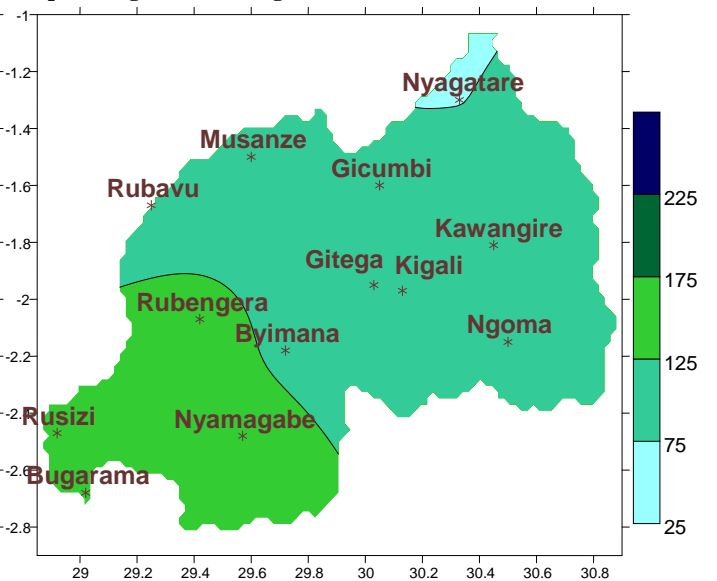
Map2: Long Term Average Rainfall (mm): Jan_LTM



Map3: Total Rainfall (mm): Dec_2017



Map4: Long Term Average Rainfall (mm): Dec_LTM

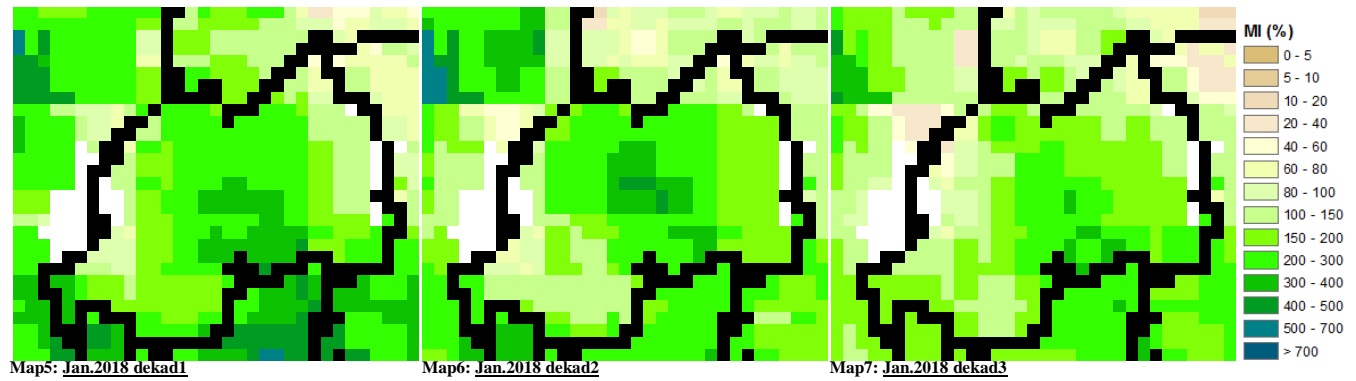


II. Detailed observed rainfall during the January_2018

The cumulative rainfall amount during December_2017; all the representing stations within the country were ranging in the normal range for most of the representing station except the north-eastern part; where the records show an above normal; and the south-western showing a below normal compared with LTM (see **Map3&4**). For the cumulative rainfall for January_2018 we observe an above normal range country wide with high rainfall amount over central and south; stretching from the east to the west with high values of rainfall that exceeded 100mm at most of the stations; elsewhere within the country (see **Map1&2**)

III. Agricultural impact

a) Satellite images: Soil Moisture Index (MI)



During January_2018 the soil kept on watering due to wet weather conditions (as shown on the above maps for the satellite derived soil moisture index (MI) with high values of MI all over the country, see **Map 5, 6&7**; indicating the first, second and third dekad respectively)

b) Rainfall forecast for February_2018

The distribution of rains during February_2018 is expected to reduce but expected to be wet over the whole country with high values over central, north and west (over the high lands) within the first two dekad and less within the last dekad

N.B: This forecast should be used in conjunction with the daily (24-hour), Three (3), Five (5) and Seven (7) days forecasts issued by the Rwanda Meteorology Agency (Meteo Rwanda)