



**Highlights:**

- **The cumulative rainfall** for July 2018 was in normal range mostly and in the below normal range for localized areas in the central, east and south-west
- **Satellite derived soil moisture index shows an increase** in soil moisture because of recent rains in the end of the third and last dekad of July\_2018 as opposed to the first two dry dekads
- **The conditions during August 2018** are expected to be **wet** as opposed to what has been observed during July\_2018

**I. Introduction**

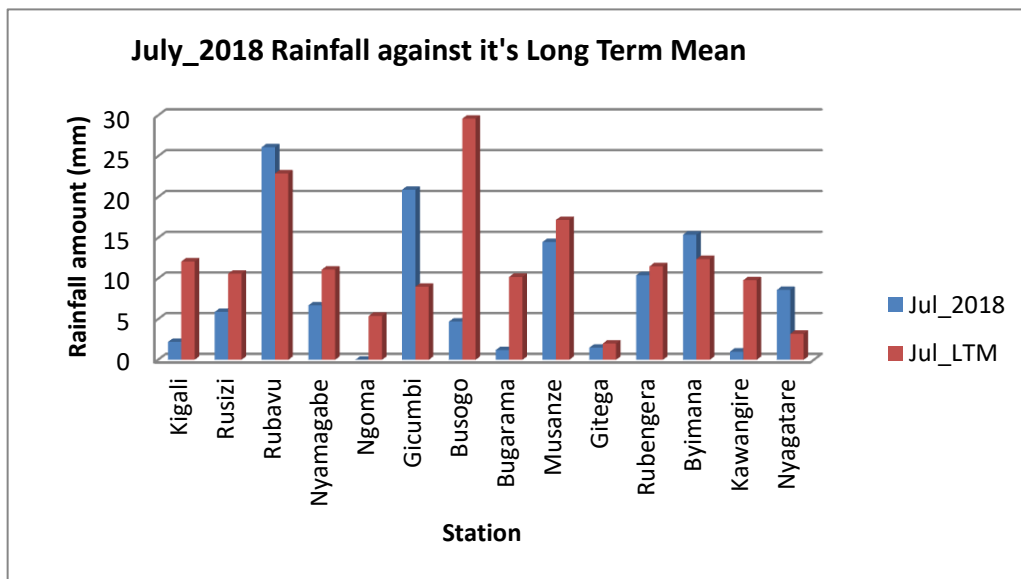
During July 2018 was in normal range mostly and in the below normal range for localized areas in the east (Ngoma received traces; i.e.; below 1mm of rainfall), central, and south-west

a) The table and histogram below indicates the rainfall recorded during July 2018 against its LTM:

**Cumulative rainfall (in mm) recorded at different stations**

Station	Jul_2018	Jul_LTM
Kigali	2.2	12.1
Rusizi (Kamembe)	5.9	10.6
Rubavu (Gisenyi)	26.1	22.9
Nyamagabe (Gikongoro)	6.7	11.1
Ngoma (Kibungo)	0.0	5.4
Gicumbi (Byumba)	20.9	9.0
Busogo	4.7	29.6
Bugarama	1.2	10.2
Musanze (Ruhengeri)	14.5	17.2
Gitega	1.5	2.0
Rubengera	10.4	11.5
Byimana	15.4	12.4
Kawangire	1.0	9.8
Nyagatare	8.6	3.2

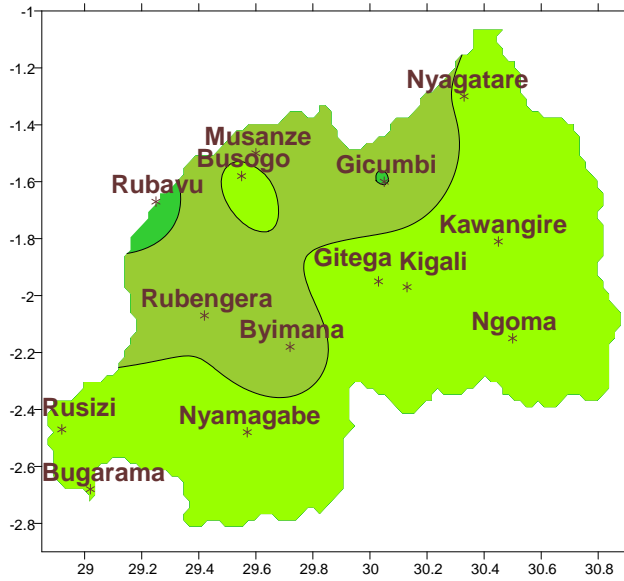
*Table1*



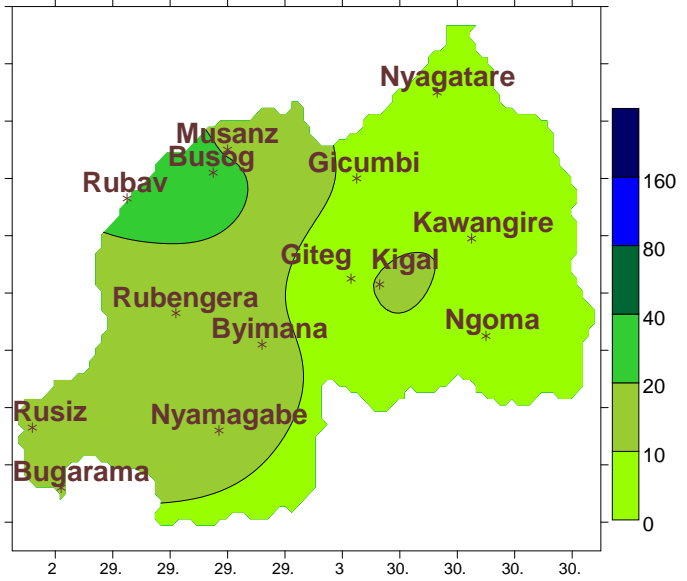
*Plot1*

- b) **Rainfall analysis:** The maps “**Map 1 and 2**” below show the cumulative rainfall recorded during July 2018 and the cumulative rainfall for the same period  
 The maps “**map 3 and 4**” show the cumulative rainfall recorded during June 2018 and the cumulative rainfall for the same period

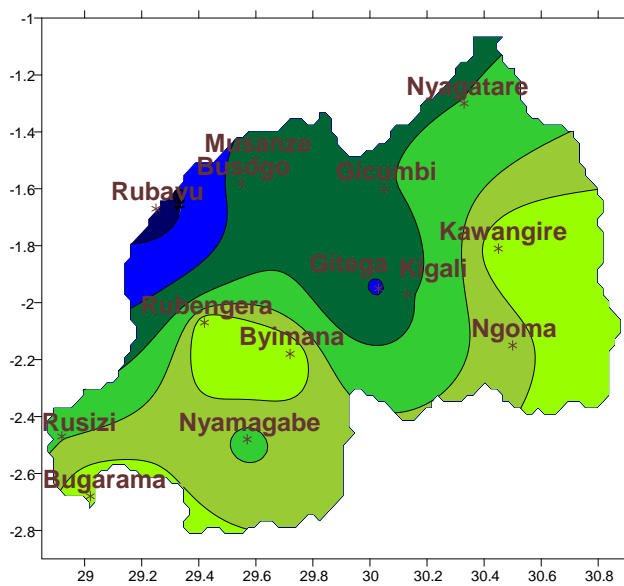
**Map1: Total Rainfall (mm): July\_2018**



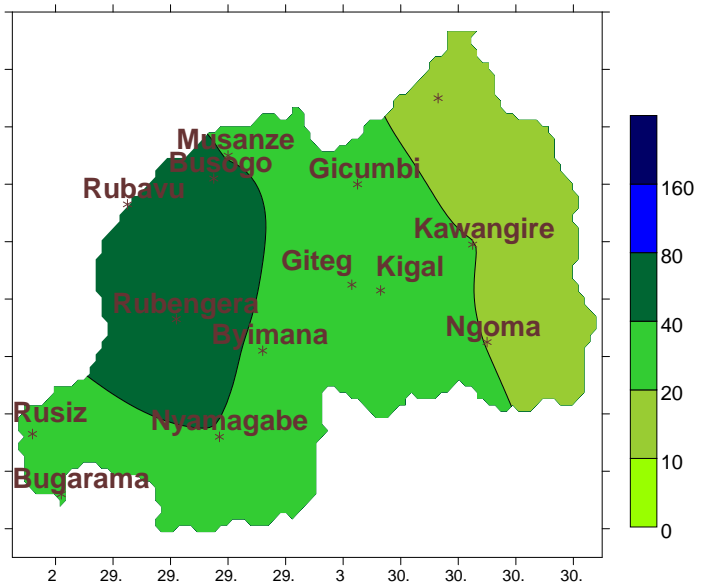
**Map2: Long Term Average Rainfall (mm): July\_LTM**



**Map3: Total Rainfall (mm): Jun\_2018**



**Map4: Long Term Average Rainfall (mm): Jun\_LTM**

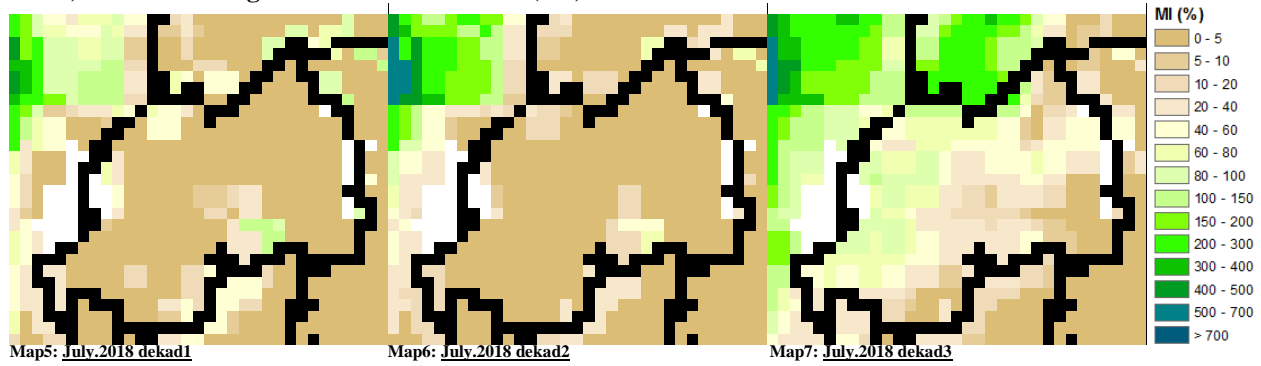


**II. Detailed observed rainfall during the July 2018**

Cumulative rainfall for July\_2018; the rains were in normal range mostly and in the below normal range for localized areas in the east (Ngoma received traces; i.e.; below 1mm of rainfall), central, and south-west; as comparing with the LTM (see **Map1&2** and **Table1**); for the month of June\_2018 was normal to above range in comparison with the Long Term Climatological Mean (LTM) at all stations with the northwest being more wet compared to the rest of the country (see **Map3&4**)

### III. Agricultural impact.

#### a) Satellite images: Soil Moisture Index (MI)



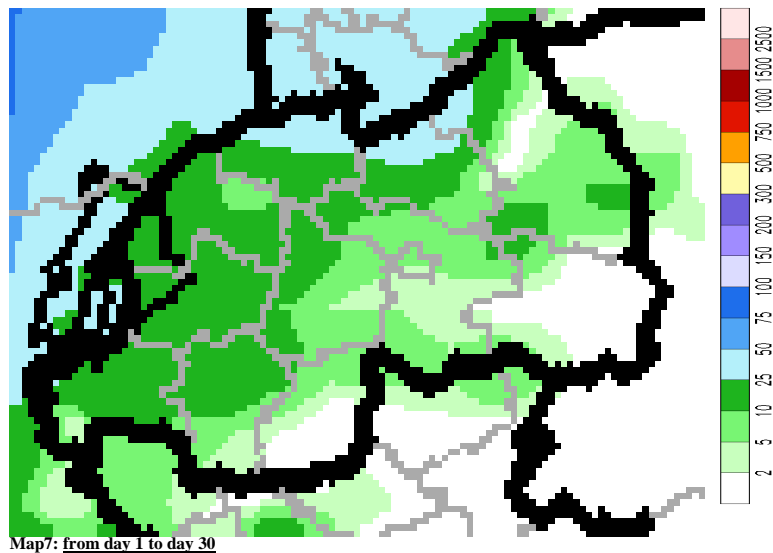
During July 2018 the satellite derived moisture index shows a dry soil for the first two dekads and an increase in soil moisture because of recent rains in the end of the third and last dekad of July\_2018 as opposed to the first two dry dekads (see **Map 5, 6&7**)

#### b) Rainfall forecast for August \_2018

The rainfall during the month of June\_2018:

- Kigali City: we expect little rains (05-50mm) with high probability of occurrence within the first dekad
- Eastern Province: we expect little rains (>01-25mm) with high probability of occurrence within the first dekad
- Southern Province: we expect moderate rains (10-50mm with high probability of occurrence within the first dekad
- Western Province: we expect moderate rains (25-75mm) throughout the month
- Northern Province: we expect moderate rains (25-75mm) throughout the month

**Amount of rain (in mm) expected for August:**



**N.B:** This forecast should be used in conjunction with the daily (24-hour), Three (3), Five (5) and Seven (7) days forecasts issued by the Rwanda Meteorology Agency (Meteo Rwanda)