



**Highlights:**

- **The cumulative rainfall** for dekad2\_June\_2018 was within the range of the LTM (Long Term Mean) Rainfall everywhere within the country
- **Satellite derived soil moisture index keeps on showing a general decrease** resulting from the dry weather conditions
- The weather conditions during dekad3\_June\_2018 are expected to **be dry** for the whole country

**I. Introduction**

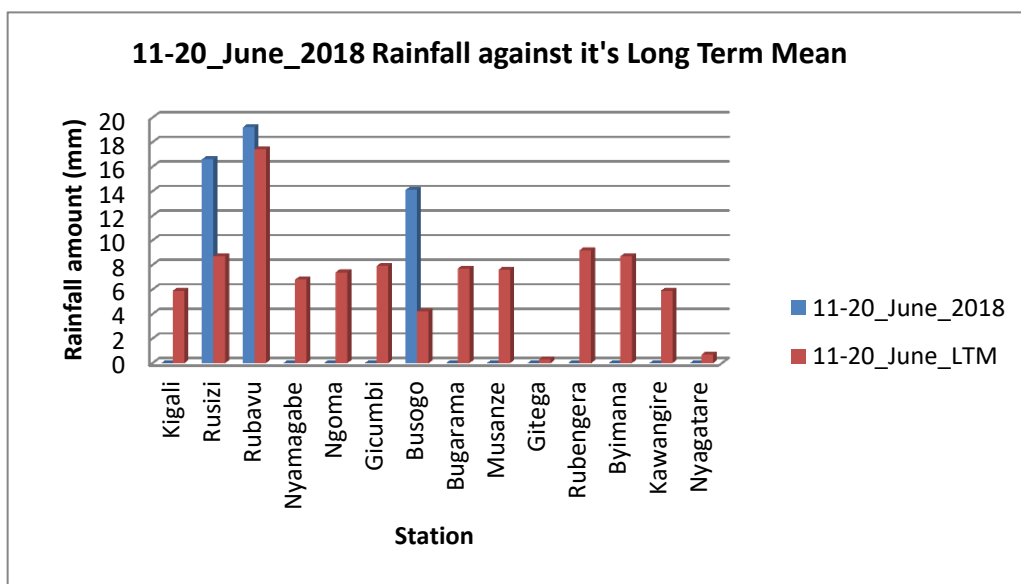
The rainfall pattern for dekad2-June\_2018 was within the range of the LTM (Long Term Mean) Rainfall everywhere within the country

a) The table and histogram below indicates the rainfall recorded during dekad2\_June\_2018:

**Cumulative rainfall (in mm) recorded at different stations**

Station	11-20_June_2018	11-20_June_LTM
Kigali	0.0	5.9
Rusizi (Kamembe)	16.6	8.7
Rubavu (Gisenyi)	19.2	17.4
Nyamagabe (Gikongoro)	0.0	6.8
Ngoma (Kibungo)	0.0	7.4
Gicumbi (Byumba)	0.0	7.9
Busogo	14.1	4.2
Bugarama	0.0	7.7
Musanze (Ruhengeri)	0.0	7.6
Gitega	0.0	0.3
Rubengera	0.0	9.2
Byimana	0.0	8.7
Kawangire	0.0	5.9
Nyagatare	0.0	0.7

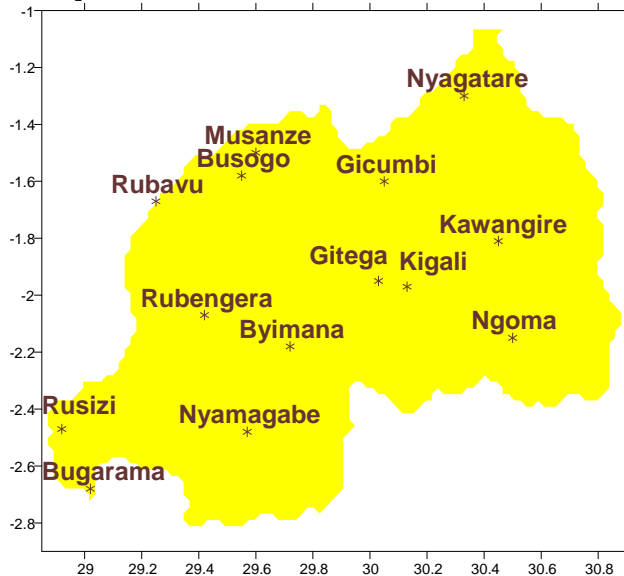
*Table1*



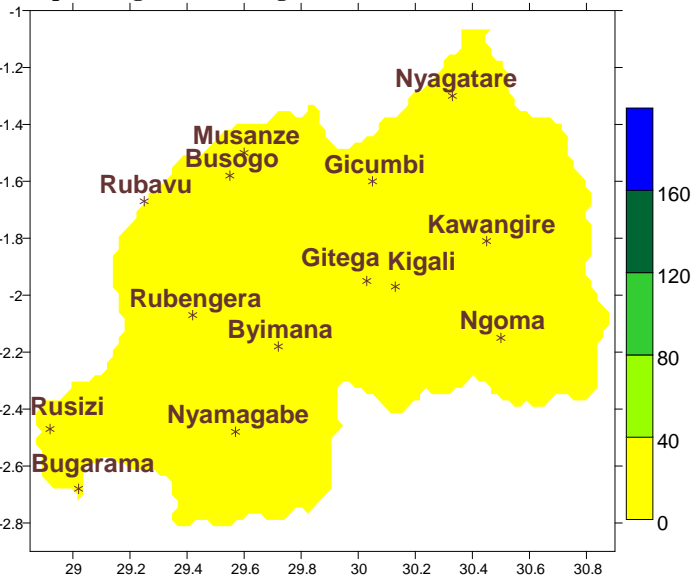
*Plot1*

b) **Rainfall analysis:** The maps “**Map 1 and 2**” below show the cumulative rainfall recorded during dekad2\_June\_2018 and the cumulative rainfall for the same period  
 The maps “**map 3 and 4**” show the cumulative rainfall recorded during deka1\_Jun\_2018 and the cumulative rainfall for the same period

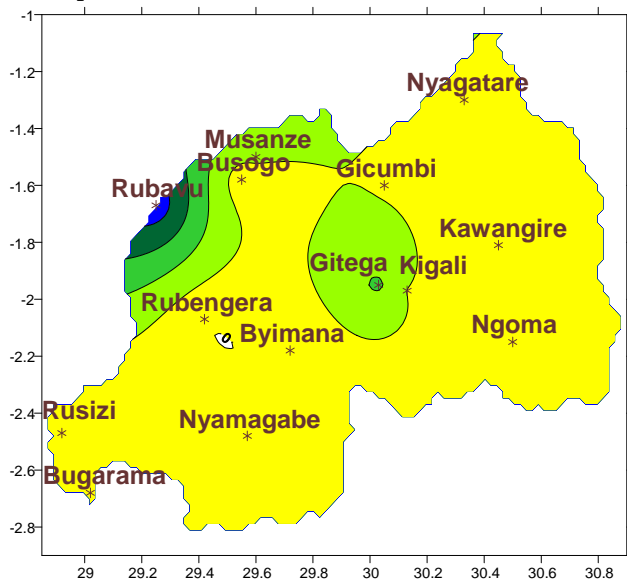
**Map1: Total Rainfall (mm): dekad2\_June\_2018**



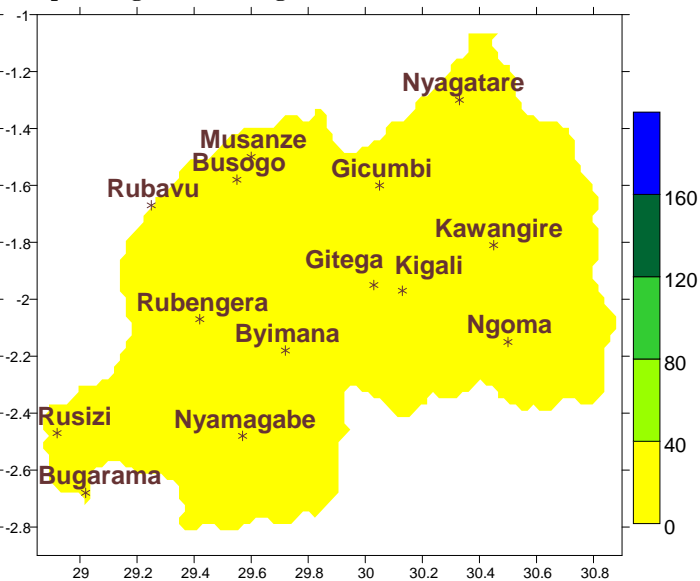
**Map2: Long Term Average Rainfall (mm): dekad2\_June\_LTM**



**Map3: Total Rainfall (mm): dekad1\_Jun\_2018**



**Map4: Long Term Average Rainfall (mm): dekad1\_Jun\_LTM**

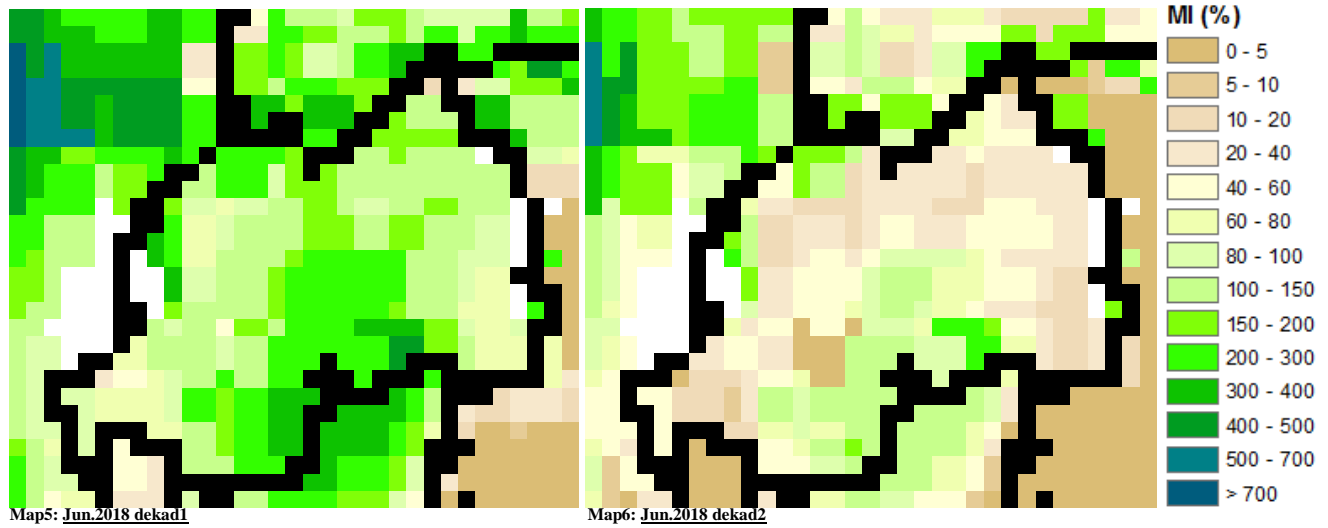


**II. Detailed observed rainfall during the dekad2\_June\_2018**

The records during dekad2\_June\_2018 within the range of the LTM (Long Term Mean) Rainfall everywhere within the country (see **Map1&2** and **Table1**) while the dekad1\_Jun\_2018 was generally suppressed across many parts except for localized stations in the central, north and north-west as compared to the LTM (see **Map3&4**)

### III. Agricultural impact

#### a) Satellite images: Soil Moisture Index (MI)



During dekad1\_Jun\_2018 to dekad2\_June\_2018 the satellite derived moisture index was reduced as a result of the little rainfall as opposed to high evapotranspiration on the vegetation cover (see **Map 5&6**)

#### b) Rainfall forecast for dekad3\_June\_2018

We expect below 10mm of rainfall for the whole country

Amount of rain (in mm) expected for the coming dekad



**N.B:** This forecast should be used in conjunction with the daily (24-hour), Three (3), Five (5) and Seven (7) days forecasts issued by the Rwanda Meteorology Agency (Meteo Rwanda)