



**Highlights:**

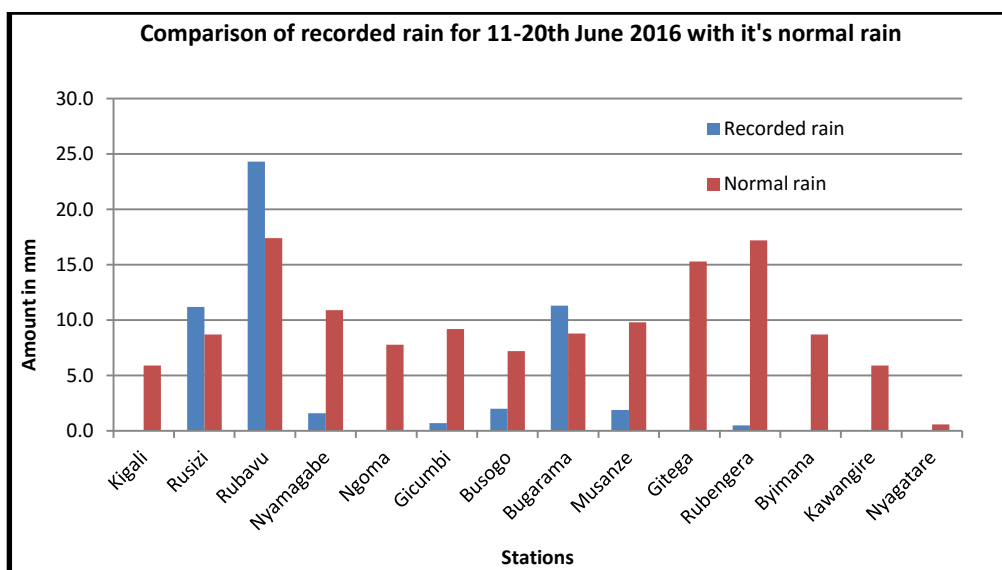
- Cumulative rainfall for second dekad of June 2016 was normal in many parts of the country only in central West and western parts of southern province was below normal.
- A continues decrease of soil moisture and vegetation cover marked the dekad across the country as we are in dry season.
- During third dekad of June 2016 from 22 to 24<sup>th</sup>, the country will experience a wide spread of cloudy conditions with light rain activities North West and partly cloudy to sunny intervals from 25<sup>th</sup> to the end of the month.

**I. Summary**

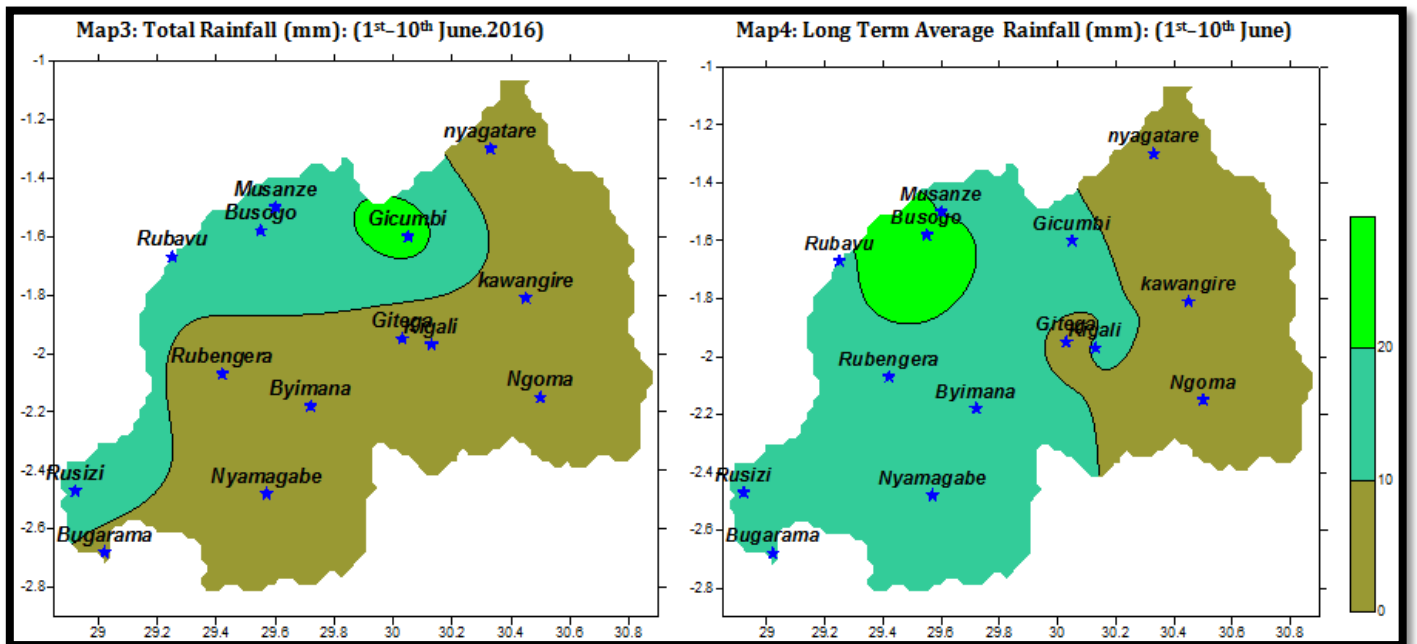
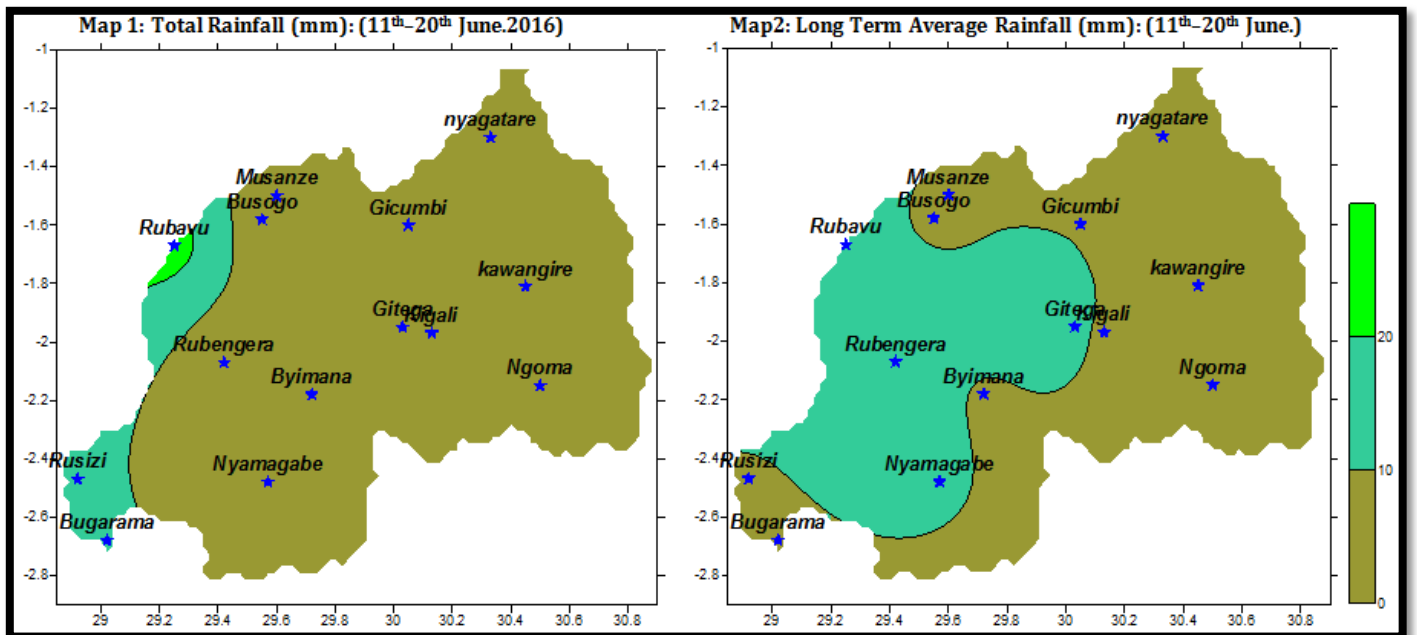
The overall situation of the second dekad of June 2016 was marked by light rain during the last dates of the dekad in North West and South West as indicated by Rusizi, Bugarama and Rubavu stations. Rubavu station indicates high value of recorded rainfall followed by Rusizi and Bugarama. The recorded rainfall comes from influence of Congo air masses affecting Western part of the country. Rainfall recorded during the last ten days was below normal in Southern Province and central part of Western Province and normal in remaining parts. Soil moisture and vegetation cover continue to decrease across the country while temperatures are normal ambient temperature for this period.

**Table 1:** Cumulative rainfall (in mm) recorded at stations during June 2016 dekad 2 compared to its long term average

Stations	Recorded rain	Normal rain
Kigali	0.1	10.3
Rusizi	15.4	15.9
Rubavu	9.5	17.1
Nyamagabe	6.5	14.5
Ngoma	0.2	7.8
Gicumbi	23	12.1
Busogo	15.2	29.5
Bugarama	3.7	11.3
Musanze	15	19.1
Gitega	0.2	7.8
Rubengera	4.5	17.2
Byimana	0.8	15.5
Kawangire	3.9	10.6
Nyagatare	0.1	3.3



**Rainfall analysis:** Maps below show the rainfall recorded within the period mentioned and their Long Term Averages



## II. Detailed observed Rainfall during June 2016 dekad 2.

### a) Eastern Province

Eastern Province recorded less rain around 0.0mm which is normal during this dekad in the entire Province (**Map.1&2 and Table 1**). Compared to the previous dekad, conditions of rainfall and temperatures are the same (**Map.1&3**).

### b) Northern Province

Northern Province recorded relatively normal rainfall of the period mentioned which is less than 10mm as shown above (**Map1&2 and table 1**). Compared to previous dekad, there is a decrease of rainfall in the Province (**fig1&3**).

### c) Southern Province

Many parts of Southern Province recorded below normal rainfall of this province during this dekad only Gisagara and Huye districts recorded normal rainfall (**Map1&2 and table 1**). Compared to previous dekad, there is no change observed (**Map.1&3**).

### d) Western Province

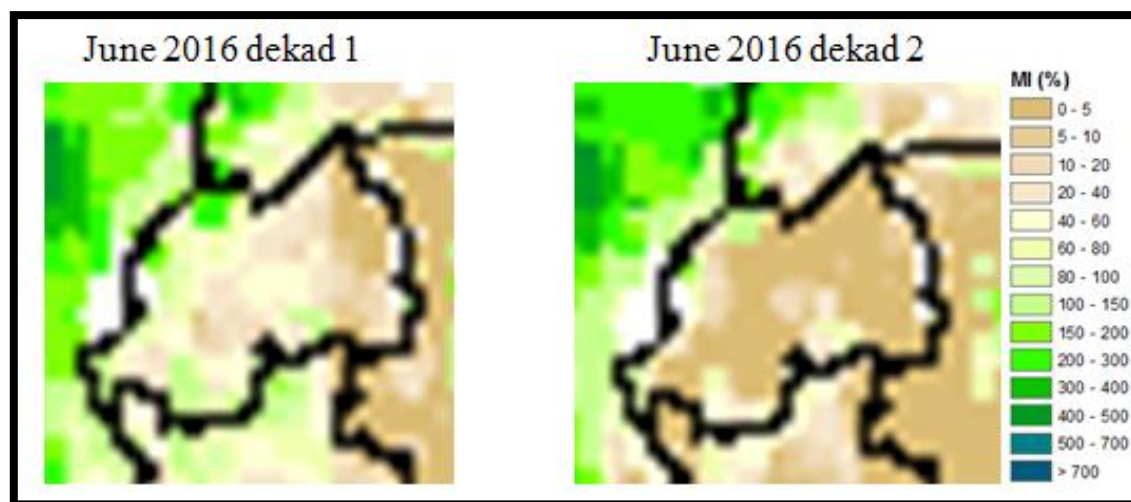
Only North Western and South Western parts of Western Province recorded rainfall during this ending dekad which was slightly above normal value as shown by Rusizi, Bugarama and Rubavu stations (**Map1&2 and table1**). Compared to previous dekad, there is no much changes observed in the Province (**Map.1&3**).

### e) Kigali Region

Less and normal rainfall was recorded in Kigali region for the period mentioned above as shown by Kanombe and Gitega stations (**Map1&2 and table 1**). Compared to previous dekad, there is no significant changes observed (**Ma1&3**).

## III. Weather impact on agriculture.

### Satellite images: Moisture Index (Source; Few's net)



During June 2016 dekad 2, moisture index (MI) from satellite images show that there is a continues decrease of soil moisture and vegetation coverage across the country (comparing the dekad 1 of June and dekad 2 of June. This is in agreement with the rainfall recorded which was decreased in many parts and number of rainy days which is significantly decreased. In most parts of the country, crops are at harvesting stage and post harvest activities. For farmers concerned with growing season C, crops are at emergency stage and irrigation activities are going on. This coming next ten days, we are expecting the persistence of dry conditions in most parts of the country which is favorable for harvesting and post harvest activities. Mostly cloudy are expected countrywide from 22<sup>nd</sup> to 24<sup>th</sup> with high probability of giving light rain in North West, from 25 to the end of the dekad, partly cloudy to sunny conditions are expected. Farmers applying growing season C are advised to continue the irrigation of their crops in their areas but considering the rainfall outlook for next 10 days below. Other farmers across the country are also advised to continue their normal agriculture activities regarding the harvesting and post harvesting activities.

#### **IV. Rainfall Outlook for the third dekad of June 2016**

In this 3<sup>rd</sup> Dekad (22-30) of June 2016 we expect to have some mostly cloudy activities over Rwanda from 22<sup>nd</sup> to 24<sup>th</sup> which will give light rain in North Western part of the country. From 25 to the end of the month, the country will have partly cloudy to sunny conditions. Below there are specific regions details:

**Kigali City:** We are expecting mostly cloudy conditions during night during the first half of the dekad which will be reduced to sunny intervals during the second half of the dekad. Conditions of rainfall and temperatures are expected to remain normal for this period.

**Eastern Region:** we are expecting to experience cloudy conditions from 22<sup>nd</sup> to 24<sup>th</sup> and sunny conditions with increased temperatures across the Province from 25<sup>th</sup> to the end of the dekad.

**Western Region:** we are expecting to experience mostly cloudy conditions with a chance of light showers from 22<sup>nd</sup> to 25<sup>th</sup>, particularly in North West and around Lake Kivu. For remaining days of the dekad, we are expecting partly cloudy conditions.

**Northern region:** we are expecting to experience predominantly cloudy conditions from 22<sup>nd</sup> to 25<sup>th</sup> and partly cloudy to sunny intervals conditions from 26<sup>th</sup> to the end of the dekad.

**Southern Region:** we are expecting to experience predominantly mainly cloudy conditions from 22<sup>nd</sup> to 24<sup>th</sup> and partly cloudy to sunny intervals from 25<sup>th</sup> to the end of the month.

**N.B: This forecast should be used in conjunction with the daily (24-hour), Three (3) and Five (5) days Forecast issued by the forecasting Division.**