



Agrometeorological Bulletin No.16, Dekad1, June (01–10) 2020 Issued on 12th June 2020

Summary

The first Dekad (01-10) of June 2020; the Western and Northern Province of the country recorded above normal rainfall while the rest of the country recorded light rainfall which was below the Long Term Mean (LTM). The highest rainfall amount of 103.4mm was recorded at Gisenyi Aero. The temperature was within the range of LTM. The maximum temperature ranged between 21.6°C at Gicumbi station in Gicumbi District and 31.5°C in Rusizi District at Bugarama station. Minimum temperature ranged between 11.3°C at Busogo station in Musanze district and 18.5°C in Rusizi District at Bugarama station.

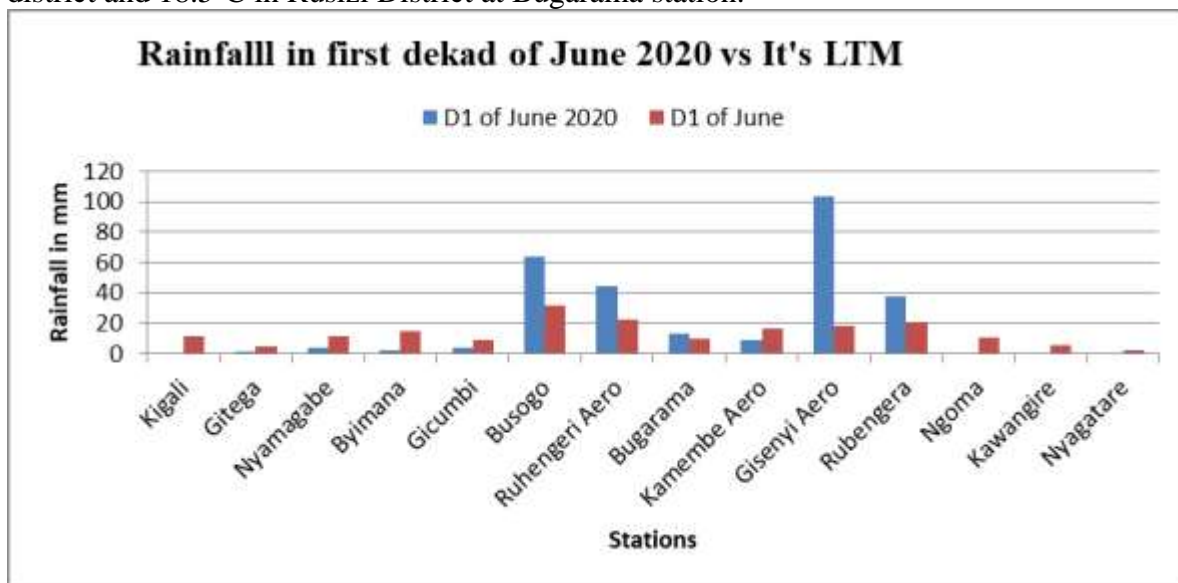


Figure 1: Rainfall performance as Compared to the LTM

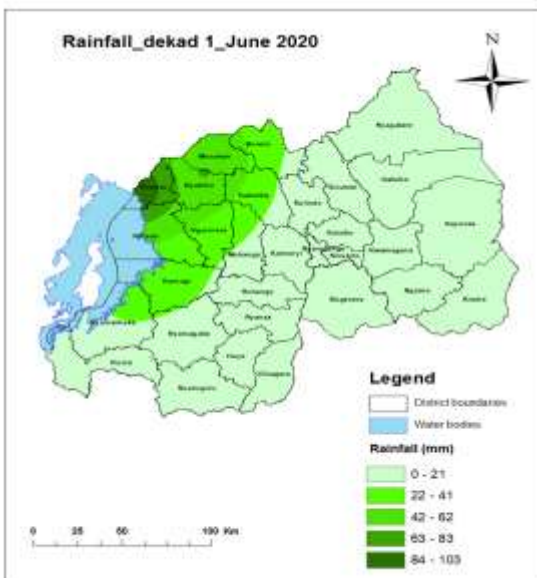
1.0 Rainfall Pattern

This section provides the overview of observed rainfall amount, rainy-days and available soil moisture for the first dekad of June 2020.

1.1 Rainfall Amount

The total rainfall amount for the first dekad of June, 2020 is presented in map 1. On daily basis it was observed that Western and Northern Provinces of the country received much rainfall compared to the Eastern Province which recorded no rain and other parts received light rain.

The highest rainfall of 103.4 mm was recorded at Gisenyi Aero, 63.5mm at Busogo and 44.8mm at Ruhengeri Aero.

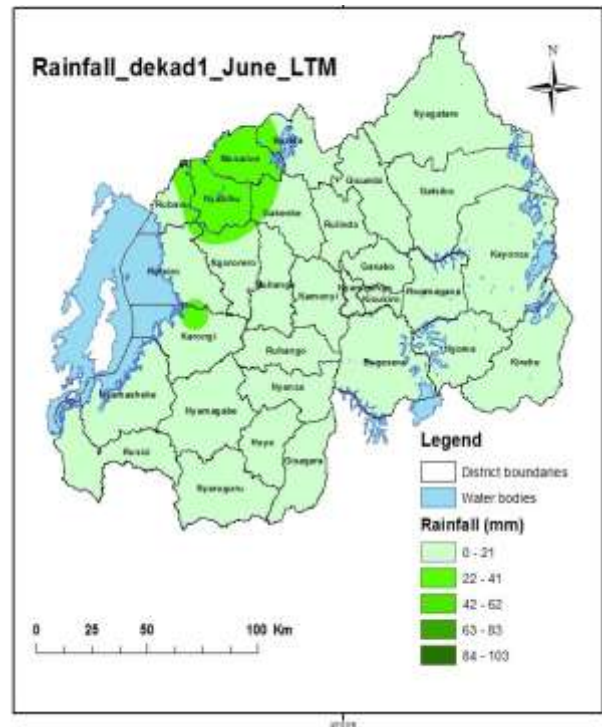


Map 1: Rainfall amount during 1st Dekad of June 2020

1.2 Rainfall climatology for the 1st dekad of June

The rainfall climatology for the 1st dekad of June is shown in map 2, which indicates that rainfall ranged from 2.6mm to 31.7mm across the country. Comparing the 1st Dekad of June 2020 and the Long Term Mean (LTM) for the same period; it was observed that rainfall was below the LTM in most parts of the country

except in some parts of Western and Northern Provinces which recorded above the normal rainfall.

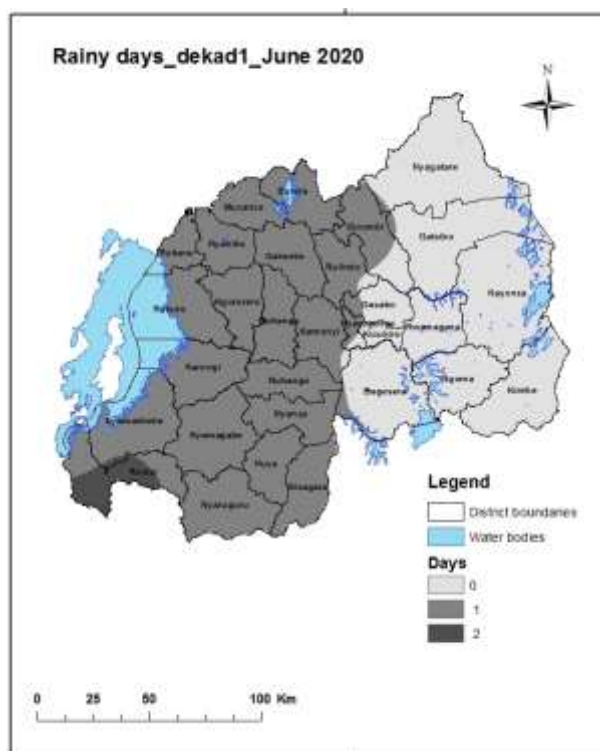


Map 2: Rainfall amount during 1st Dekad of June (LTM)

1.3. Number of Rain Days

Map 3 shows the distribution of number of rain-days. A rainy day is defined as a day with rainfall of 0.85mm or more.

Kigali Aero, Ngoma, Kawangire and Nyagatare stations received no rainfall, two days were observed at Bugarama station, no rainfall was received at and the rest of stations received only one day of rainfall.



Map 3: Rainy days

1.4 Soil moisture index

This section shows the available soil moisture across the country. Soil moisture decrease over most parts of the country due to dry weather conditions experienced during first dekad of June 2020. The soil moisture will continue to decrease during the second dekad of June 2020 due to the expected persistence of dry weather conditions.

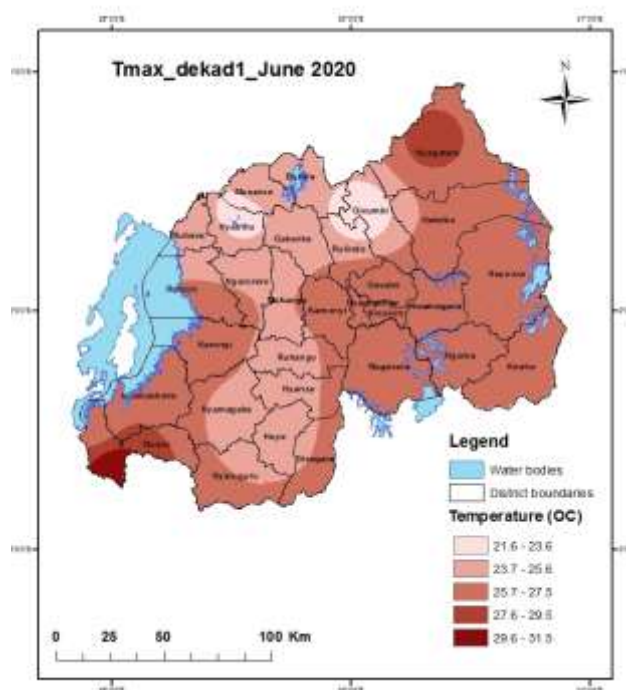
2.0 Temperature observation

The average maximum and Minimum temperature across the country during the 1st dekad of June 2020 is highlighted in the section below.

2.1 Mean Maximum Temperature

Map 4 shows the actual mean maximum temperature distribution across the country which indicates that the South Western, Kigali City and Eastern Provinces were warmer compared to Northern and Southern Provinces.

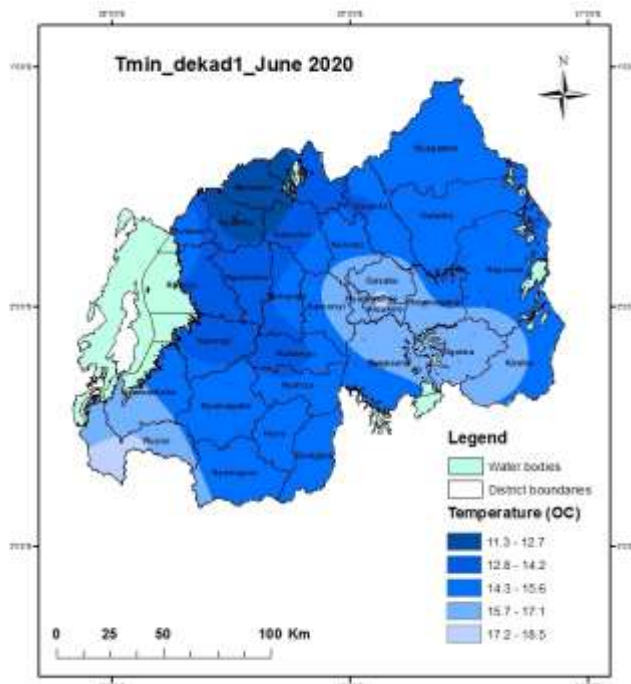
However, in most parts of the country the mean maximum temperature ranged between 21.6⁰C and 28.3⁰C with exceptional case of 31.5⁰C at Bugarama station.



Map 4: Mean Maximum Temperature for dekad 1 June 2020

2.2 Minimum Temperature

The average minimum temperature across the country is shown in Map 5. The Northern parts experienced colder temperature compared to other parts of the country, even though the minimum temperature decreased a bit compared to the previous dekad. The minimum temperature ranged between 11.3⁰C at Musanze to 18.5⁰C at Bugarama.



Map 5: Mean Minimum Temperature for dekad3 of May 2020

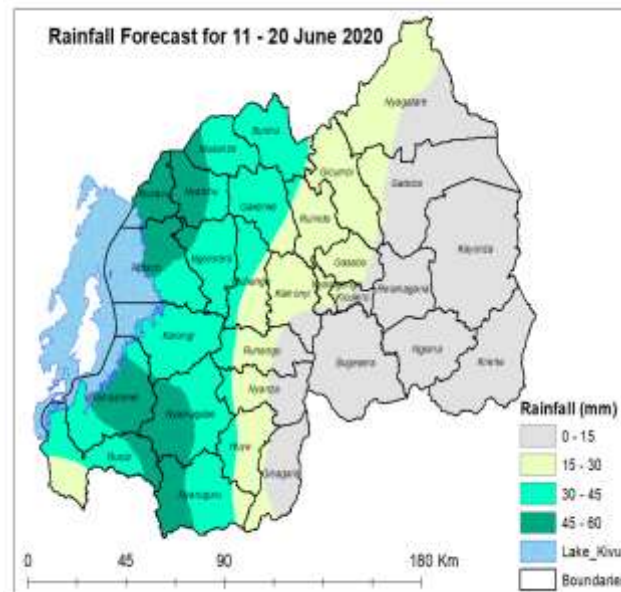
3.0 Weather Outlook and Agricultural advisory for the 2nd dekad (11-20) June, 2020.

3.1 Weather Outlook for the 2nd dekad of June 2020.

Rainfall forecasted from 11th to 20th June 2020 will range between 0 and 60mm countrywide. Spatial distribution (Map below) shows that rainfall will range between 45 and 60mm which is expected in Rubavu District, central and northern part of Rutsiro, western Nyabihu, western Musanze, small part of western Ngororero, central Nyamasheke, western Nyamagabe, western Nyaruguru and eastern Rusizi Districts. Rainfall ranging between 30mm and 45mm is expected in Burera, Karongi, bigger part of Musanze, eastern Nyaruguru, eastern Nyamagabe bigger part of Gakenke and western Muhanga, Ruhango, Nyanza and Huye. Rainfall ranging between 15mm and 30mm is expected in western Nyagatare and Gatsibo, Gicumbi, Kigali city, Kamonyi, eastern Muhanga, western Huye and central parts of Ruhango and Nyanza.

The remaining parts are expected to experience rainfall between 0 and 15mm. The rain is expected between 11th and 15th June 2020 with an average of 2 to 3 rainy days which will mainly result from local effects.

The rainfall expected in the dekad 2 of June 2020 will be above the Long Term Average across the country. The Long Term Average for the month of June dekad 2 ranges between 0mm and 30mm



Map 6: Rainfall Forecast for second dekad of June 2020

3.2 Agricultural Activity/Advisories

There is a widespread of rainfall cessation across the country, farmers are advised to start using irrigation where necessary and harvesting. Farmers are also advised to work closely with Agriculture Extension Officers. For more meteorological information about weather forecast you can visit Meteo Rwanda's website: www.meteorwanda.gov.rw. Or call toll free number (6080)