



Ikiyamakuru ku miterere y'ibihe N°08/2017:

Taliki: 11–20 Werurwe 2017

Ryoherejwe kuwa 22 Werurwe 2017

Ingingo z'ingenzi:

- o **Igiteranyo cy'imvura** yabonetse kuva taliki 11-20_Werurwe_2017; cyagaragaje imvura yabaye nyinshi mu gihugu uretse agace ko mu gihugu hagati.
- o Ubwiganze bw'ibicu ndetse n'imvura yabonetse mu gice cya kabiri cya Werurwe 2017 byatumye ubutaka bukomeza kugumana ububobere bubereye ihinga
- o **21-28_Werurwe_2017**; hateganyijwe **ukwiyongera kw'imvura** mu ngano ndetse no mu nshuro.

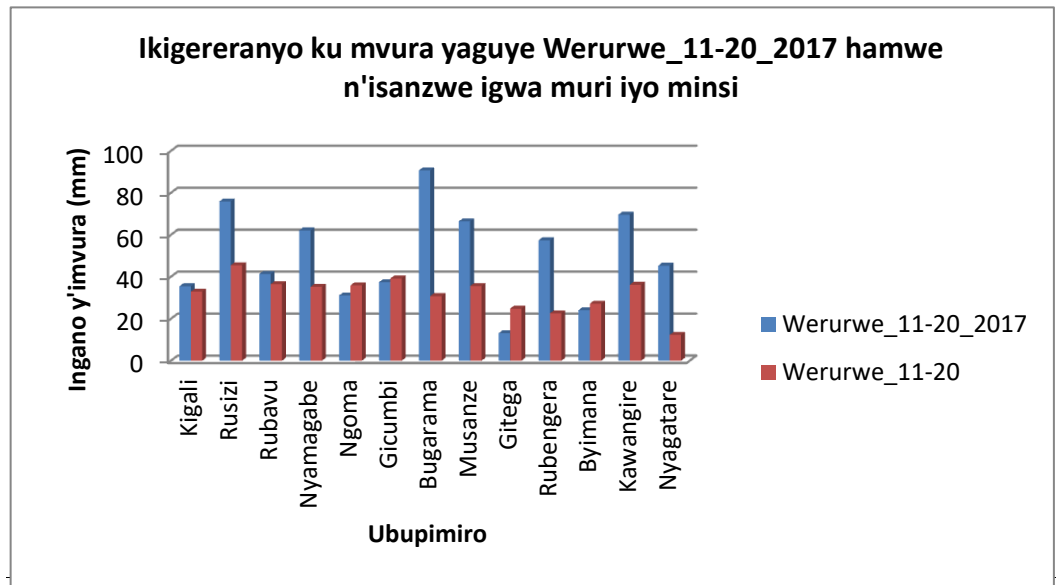
I. Iriburiro

Amajyaruguru ndetse n'uburengerazuba by'u Rwanda byagaragaje imvura nyishi ugereranyije n'iyabonetse ahandi mu gihugu, naho mu gihugu hagati ho haboneka imvura iri ku kigero cy'iyoy dusanzwe tubona kumanuka.

- Imbonerahamwe zikurikira zirererekana ikigereranyo ku mvura yaguye hagati ya 11-20_Werurwe_2017 ndetse n'imvura dusanzwe tubona muri iyo minsi kuri buri bupimiro

Igiteranyo cy'imvura kuri buri bupimiro (muri mm)

Ubupimiro	Werurwe_11-20_2017	Werurwe_11-20
Kigali	35.5	32.9
Rusizi (Kamembe)	75.9	45.5
Rubavu (Gisenyi)	41.3	36.5
Nyamagabe (Gikongoro)	62.1	35.2
Ngoma (Kibungo)	31.1	35.9
Gicumbi (Byumba)	37.4	39.2
Bugarama	90.7	30.8
Musanze (Ruhengeri)	66.4	35.6
Gitega	13.1	24.8
Rubengera	57.4	22.6
Byimana	24.1	27.2
Kawangire	69.6	36.2
Nyagatare	45.3	12.3

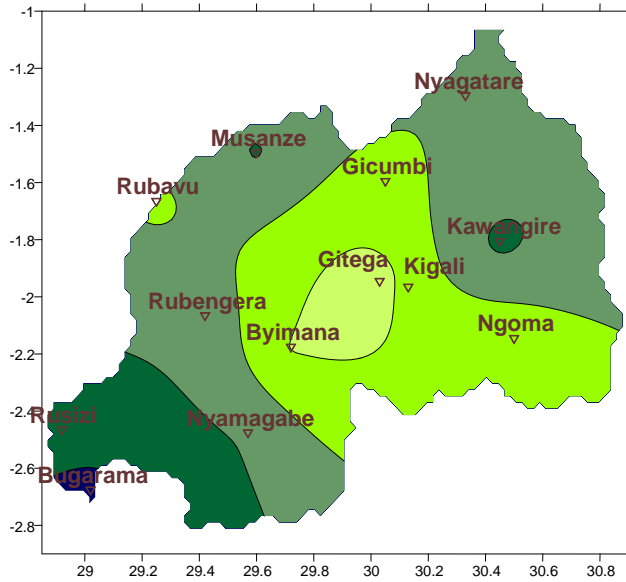


Igishushanyo

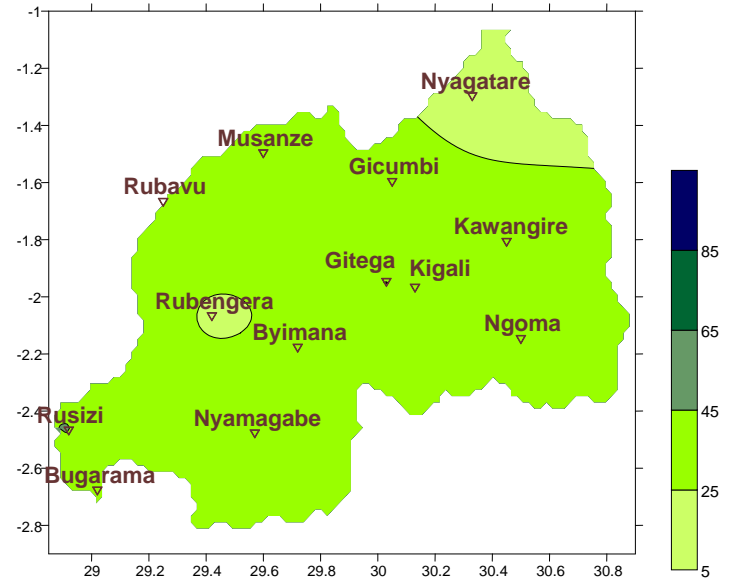
Imbonerahamwe ya

b) **Ubusesenguzi ku mvura yaguye:** Ikarita zikurikira (iya **1&2**) zigereranya igiteranyo cy'imvura yaguye hagati ya 11-20_Werurwe_2017 ndetse n'imvura isanzwe igwa muri iyo minsi. Naho Ikarita **3&4** zikerekana igiteranyo cy'imvura yaguye hagati ya 01-10_Werurwe_2017 ndetse n'isanzwe igwa muri ayo mataliki.

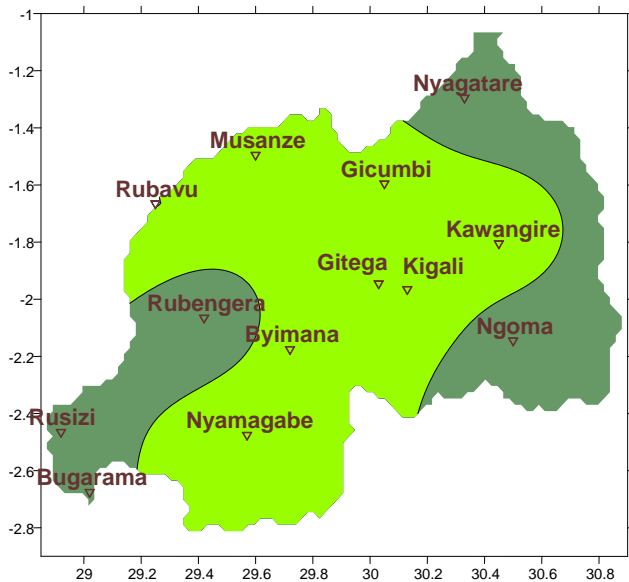
Ikarita ya1: Imvura yaguye (mm): 11-20_Werurwe_2017



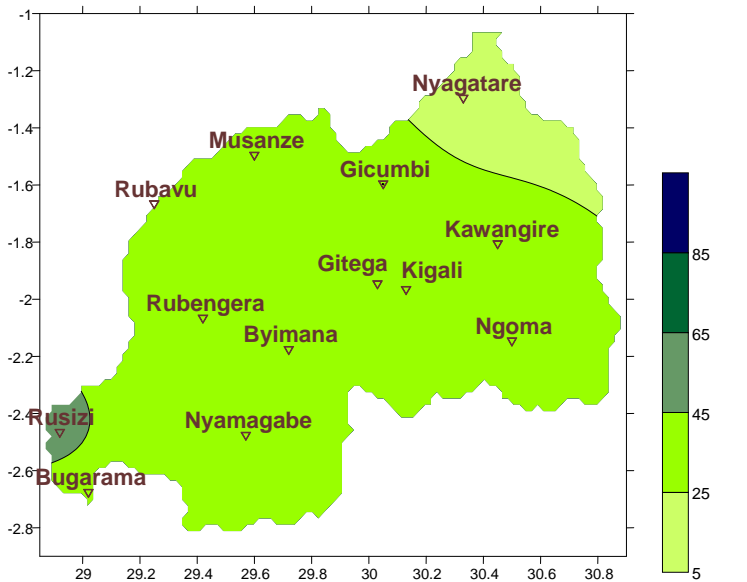
Ikarita ya2: Imvura isanzwe igwa (mm): 11-20_Werurwe



Ikarita ya1: Imvura yaguye (mm): 01-10_Werurwe_2017



Ikarita ya2: Imvura isanzwe igwa (mm): 01-10_Werurwe



II. Uko imvura yaguye hirya no hino mu gihugu mu mataliki ya 11-20_Werurwe_2017 mu buryo burambuye

Igiteranyo cy'imvura yabonetse mu mataliki ya 11-20_Werurwe; cyagaragaje ko imvura yabaye nyinshi mu burasirazuba ndetse n'uburengerazuba bw'igihugu naho ubupimiro bwo mu gihugu hagati (Byimana na Gitega) hagaragara ko habonetse imvura nke (reba **Ikarita1&2**). Mu mataliki ya 01-10_Werurwe; imvura yabonetse yari hafi ku kigereranyo cy'iyi dusanzwe tubona muri iyo minsi henshi mu gihugu usibye uduce twegereye ikiyaga cya Kivu twabonye imvura nyinshi (reba **Ikarita3&4**)

a) Intara y'Uburasirazuba

Usibye ubupimiro bwa Ngoma (mu majyepfo y'iyi Ntara) habonetse imvura nke ahandi habonetse imvura nyinshi ku yari isanzwe iboneka muri iyi minsi (reba **Imbonerahamwe ya1** ndetse n' **Ikarita1&2**)

b) Intara y'Amajyaruguru

Intara y'Amajyaruguru yagaragaje imvura iri mu kigereranyo cy'isanzwe iboneka (reba **Imbonerahamwe ya1** ndetse n' **Ikarita1&2**)

c) Intara y'Amajyepfo

Uretse amajyaruguru y'iyi Ntara ku bupimiro bwa Byimana habonetse imvura nke, ahandi habonetse imvura nyinshi ku isanzwe ihaboneka muri iyi minsi (reba **Imbonerahamwe ya1** ndetse n' **Ikarita1&2**)

d) Intara y'i Burengerazuba

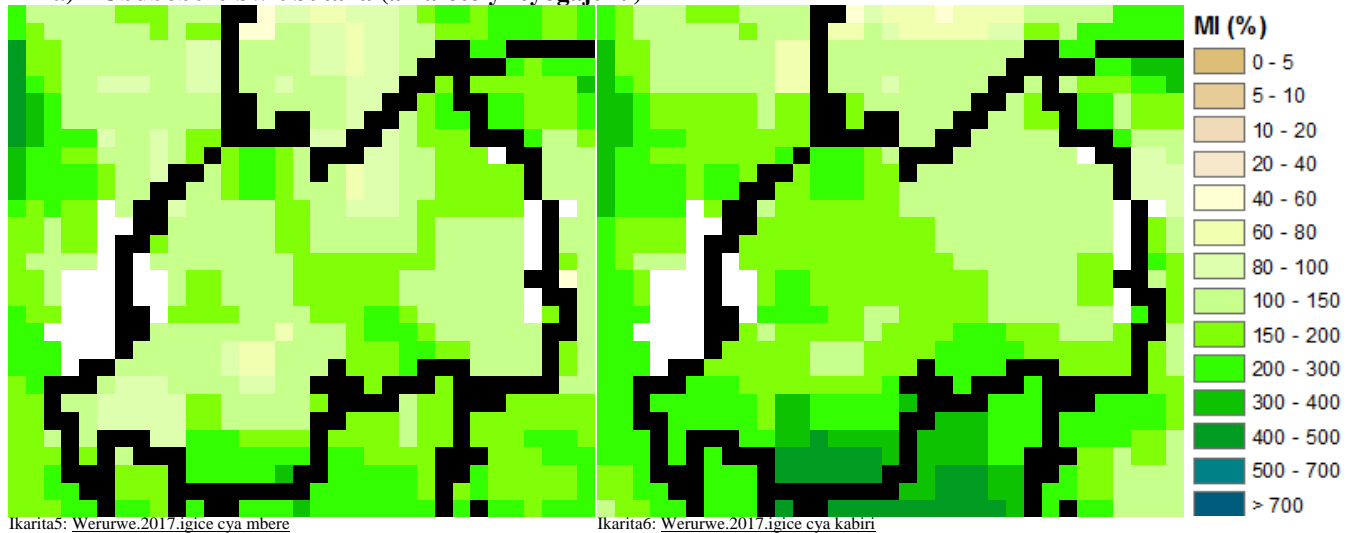
Intara y'Uburengerazuba hagaragaye imvura iri hejuru y'iyo dusanzwe tubona muri iyi minsi (reba **Imbonerahamwe ya1** ndetse n' **Ikarita1&2**)

e) Umujyi wa Kigali

Hagaragaye imvura nke kuyo dusanzwe tubona mu gice cya kabiri cya Werurwe (reba **Imbonerahamwe ya1** n' **Ikarita ya1&2**)

III. Ingaruka ku Buhinzi

a) Ububobere bw'ubutaka (amafoto y'icyogajuru)



Mu gice cya mbere ndetse n'icya kabiri bya Werurwe_2017; Ububobere bw'ubutaka bwariyongereye bitewe n'ubwiganze bw'ibicu byatumye hatabaho ubuyayuke bw'amazi ndetse n'imvura yagiye igwa muri iki gihe cy'itumba (reba **Ikarita 5&6**)

Mu gice cya gatatu cya Werurwe_2017; hateganijwe imvura izakomeza kubobera ubutaka ari nako yiyongera ugereranyije n'igice cya 2 cya Werurwe_2017; Abahinzi bakaba basabwa kwita ku mirimo igendanye n'imvura.

Iteganagihe ry'igice cya gatatu Werurwe_2017

Hateganijwe imvura iziyongera mu bice byose by'igihugu:

Umujyi wa Kigali; hateganijwe ikirere kirangwa n'ibicu byinshi ndetse n'ubwiyongere bw'imvura.

Intara y'Uburasirazuba; hateganijwe ikirere kirangwa n'ibicu byinshi ndetse n'ubwiyongere bw'imvura.

Intara y'Uburengerazuba; hateganijwe ubwiyongere bw'imvura mu bice byose by'iyi Ntara.

Intara y'Amajyaruguru; hateganijwe imvura mu bice byose by'iyi Ntara.

Intara y'Amajyepfo; hateganijwe ikirere kirangwa n'ibicu byinshi ndetse n'ubwiyongere bw'imvura.

N.B: Iri teganyagihe rigomba kwifashishwa hagendewe kurisohoka buri muni (buri masaha 24), iry'iminsi itatu (3), itanu (5) ndetse n'iry'iminsi irindwi (7) ritangwa n'Ikigo cy'Ubumenyi bw'Ikirere (Meteo Rwanda)