



Ikiyamakuru ku miterere y'ibihe N°07/2018:

Werurwe igice cya1: 01–10 Werurwe 2018

Ryoherejwe kuwa 12 Werurwe 2018

Ingingo z'ingenzi:

- **Igiteranyo cy'imvura** yabonetse kuva taliki 1-10_Werurwe_2018; cyagaragaje imvura yabaye nyinshi ikageza ku kigero cyo hejuru ugereranyije n'isanzwe iboneka muri icyo minsi kuri buri bupimiro;
- **Imvura nyinshi yabonetse** muri iki gice cya mbere cya Werurwe_2018; yatumye habaho ubwiyongere bwinshi ku bubobere bw'ubutaka
- **11-20_Werurwe_2018;** hateganyijwe **imvura** izaboneka mu bice byose by'igihugu ku kigero kingana kandi ikaba izaba isanzwe ugereranyije n'icyo dusanzwe tubona mu gihugu hose

I. Iriburiro

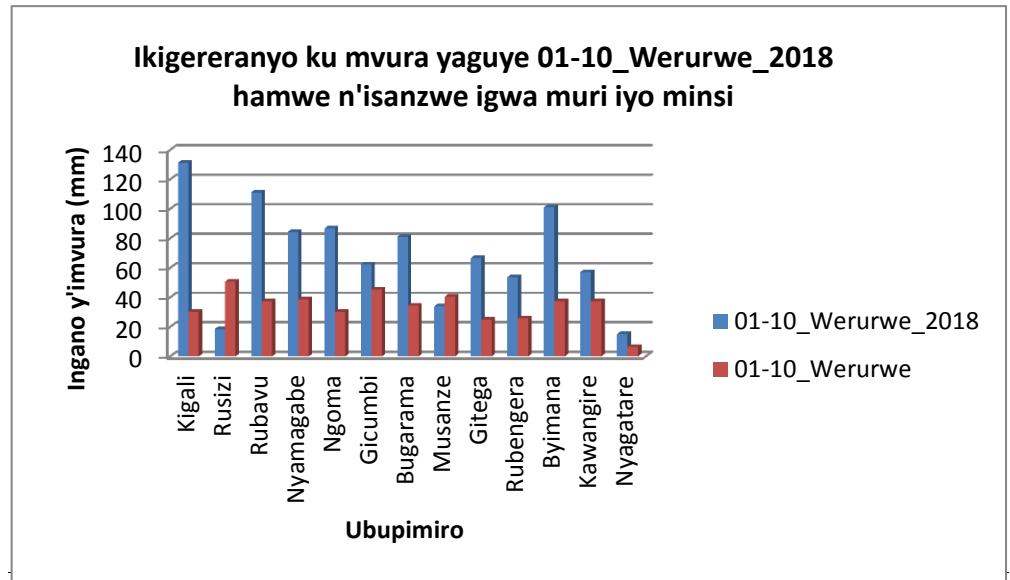
Igiteranyo cy'imvura yaguye mu gice cya mbere cya Werurwe_2018; cyagaragaje imvura nyinshi kuri buri bupimiro ugereranyije n'imvura isanzwe iboneka muri icyo minsi bitewe n'imiyaga yo mu Nyanja y'Abahinde yatumye Akarere u Rwanda ruherereyemo; kabona imvura nyinshi

- Imbonerahamwe zikurikira zirererekana ikigereranyo ku mvura yaguye mu 01-10_Werurwe_2018 ndetse n'imvura dusanzwe tubona muri icyo minsi kuri buri bupimiro

Igiteranyo cy'imvura kuri buri bupimiro (muri mm)

Ubupimiro	01-10_Werurwe_2018	01-10_Werurwe
Kigali	131.3	30.2
Rusizi (Kamembe)	18.5	50.7
Rubavu (Gisenyi)	111.2	37.2
Nyamagabe (Gikongoro)	84.4	38.7
Ngoma (Kibungo)	86.7	30.3
Gicumbi (Byumba)	62.4	45.4
Bugarama	81.2	34.4
Musanze (Ruhengeri)	33.9	40.4
Gitega	66.6	25.0
Rubengera	53.7	25.9
Byimana	101.0	37.4
Kawangire	57.2	37.5
Nyagatare	15.1	6.4

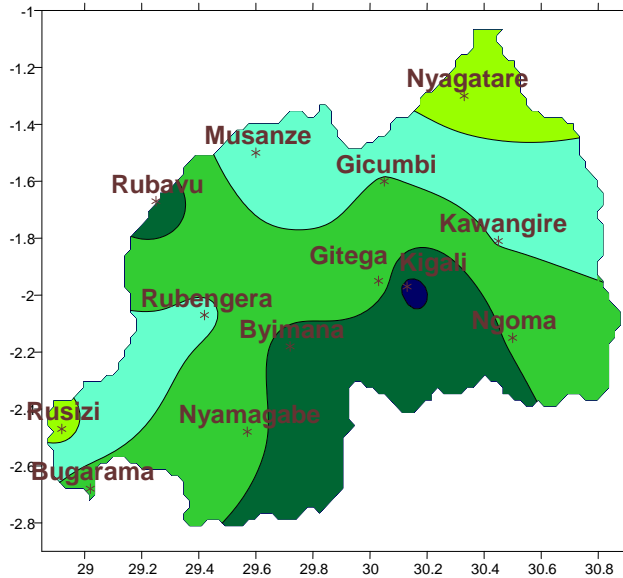
Imbonerahamwe ya



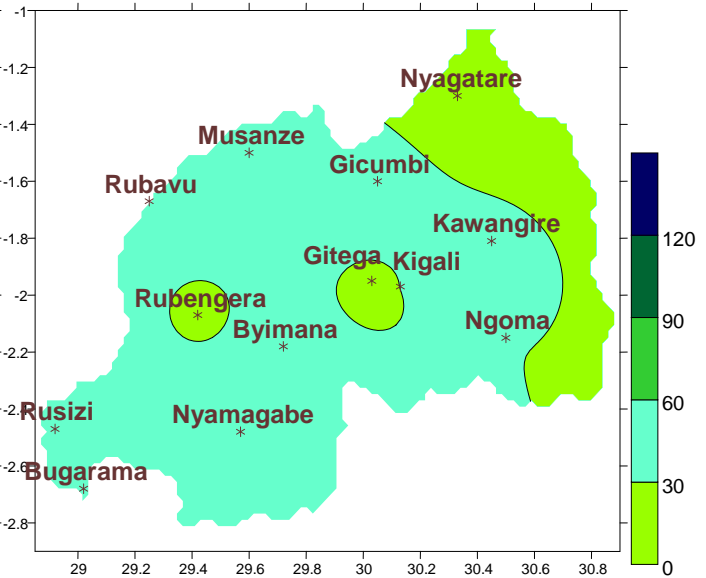
Igishushanyo 1

b) **Ubusesenguzi ku mvura yaguye:** Ikarita zikurikira (iya **1&2**) zigereranya igiteranyo cy'imvura yaguye 01-10_Werurwe_2018 ndetse n'imvura isanzwe igwa muri iyo minsi
 Naho Ikarita **3&4** zikerekana igiteranyo cy'imvura yaguye 21-28_Gashyantare_2018 ndetse n'isanzwe igwa muri ayo mataliki.

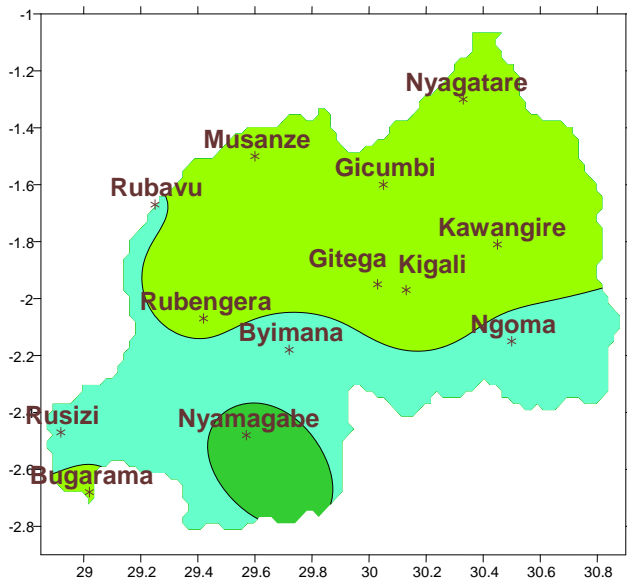
Ikarita ya1: Imvura yaguye (mm): 01-10_Werurwe_2018



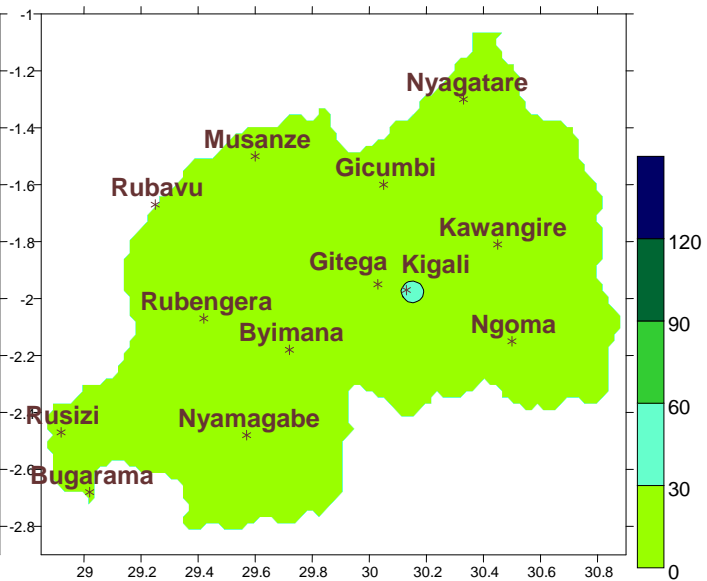
Ikarita ya2: Imvura isanzwe igwa (mm): 01-10_Werurwe



Ikarita ya1: Imvura yaguye (mm): 21-28_Gashyantare_2018



Ikarita ya2: Imvura isanzwe igwa (mm): 21-28_Gashyantare

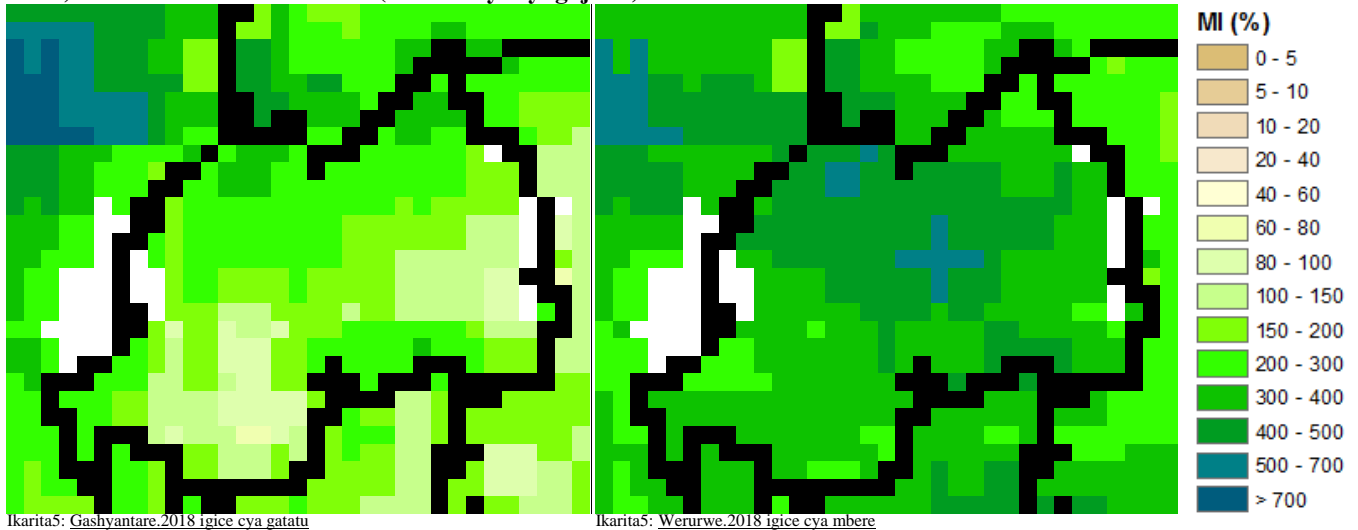


II. Uko imvura yaguye hirya no hino mu gihugu mu mataliki ya 01-10_Werurwe_2018 mu buryo burambuye

Igiteranyo cy'imvura yabonetse mu mataliki ya 01-10_Werurwe; cyagaragaje ko imvura yabaye nyinshi hose mu gihugu; aho ku bupimiro bwa Kigali ariho habonetse nyinshi ingana na mm131.3 (reba **Ikarita1&2** ndetse n'**Imbonerahamwe1**). Naho igiteranyo cy'imvura yabonetse mu mataliki ya 21-28_Gashyantare_2018; cyagaragaje imvura iri ku kigero cy'isanzwe mu majyaruguru y'Uburasirazuba, mu gihugu hagati ndetse n'amajyaruguru; ahandi hasigaye haboneka imvura yisumbuyeho ku yari isanzwe ihaboneka (reba **Ikarita3&4**)

III. Ingaruka ku Buhinzi

a) Ububobere bw'ubutaka (amafoto y'icyogajuru)

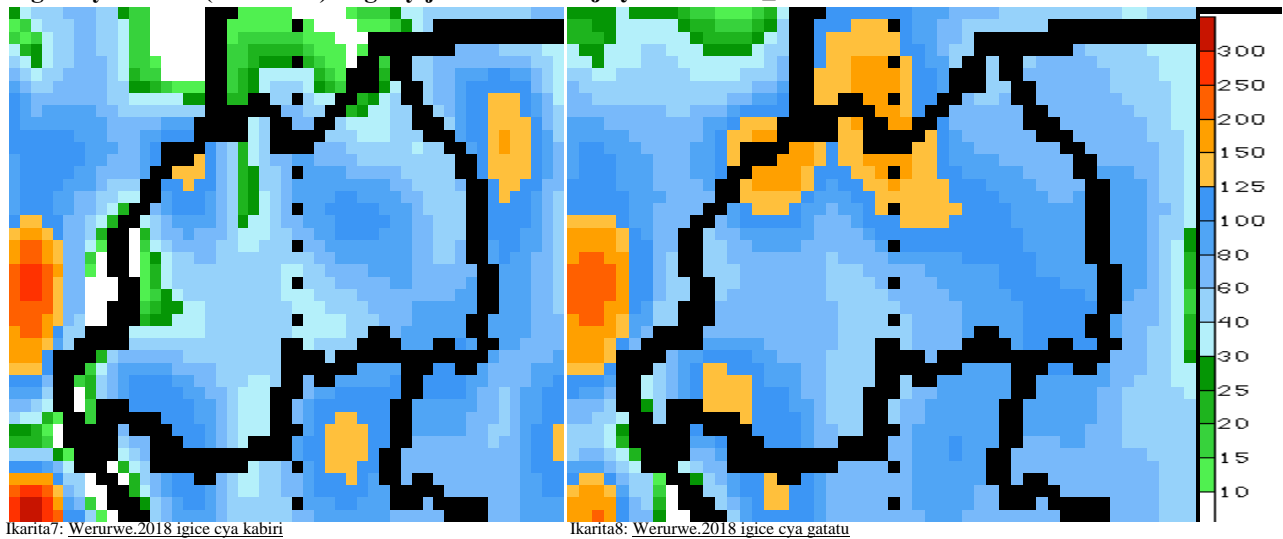


Kuva taliki ya 21_Gashyantare kugeza 10_Werurwe_2018; Ububobere bw'ubutaka bwariyongereye hose mu gihugu kugeza na nubu ubutaka bukaba bugifite ububobere bubereye ibihingwa byinshi (reba **Ikarita 5&6**)

b) Iteganyagihe ry'igice cya kabiri Werurwe_2018

Mu gice cya kabiri cya Werurwe_2018; hateganyijwe imvura iri ku kigereranyo kingana mu gihugu hose kandi izaba iri no ku kigereranyo cy'iyari isanzwe iboneka kuri buri bupimiro; naho mu gice cya gatatu tukaba twiteze imvura izaba nyinshi mu majyaruguru ndetse n'uburengerazuba ugereranyije n'iteganyijwe ahandi:

Ingano y'imvura (muri mm) iteganyijwe mu minsi iye ya Werurwe_2018



N.B: Iri teganyagihe rigomba kwifashishwa hagendewe kurisohoka buri muni (buri masaha 24), iry'iminsi itatu (3), itanu (5) ndetse n'iry'iminsi irindwi (7) ritangwa n'Ikigo cy'Ubumenyi bw'Ikirere (Meteo Rwanda)