



Highlights:

- **The cumulative rainfall** for March_2018 was generally in the above range in comparison with the Long Term Climatological Mean (LTM) except Rusizi station with records of rainfall that was below the LTM
- **An alternative increase and decrease in soil moisture** was observed across many parts the country; from being damp to moderately moisty
- The rainfall during April_2018 is expected to be **higher than what was received in March** especially over the high hills of the Congo-Nil crest

I. Introduction

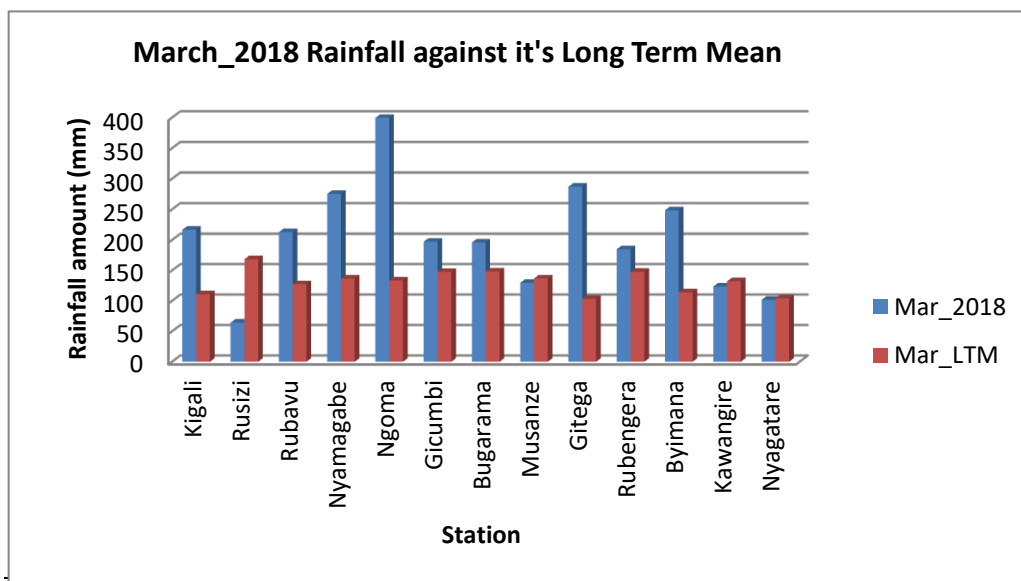
The rainfall during this period March_2018 was generally in the above range in comparison with the Long Term Climatological Mean (LTM) except Rusizi station with records of rainfall that was below the LTM

a) The table and histogram below indicates the rainfall recorded during March_2018 and its Long Term Mean (LTM):

Cumulative rainfall (in mm) recorded at different stations

Station	Mar_2018	Mar_LTM
Kigali (Kanombe)	216.8	111.0
Rusizi (Kamembe)	64.3	168.4
Rubavu (Gisenyi)	212.9	127.3
Nyamagabe (Gikongoro)	275.2	136.8
Ngoma (Kibungo)	399.6	133.5
Gicumbi (Byumba)	197.2	147.3
Bugarama	195.9	148.2
Musanze (Ruhengeri)	129.5	136.9
Gitega	287.1	103.3
Rubengera	184.7	147.8
Byimana	248.6	114.1
Kawangire	123.6	132.2
Nyagatare	101.6	104.2

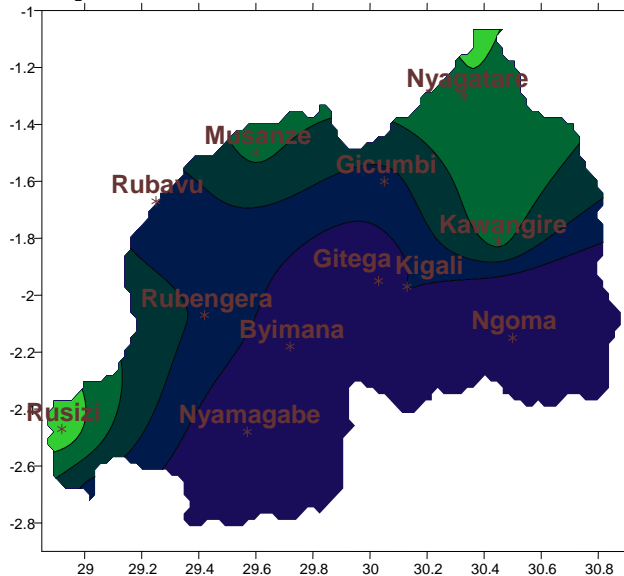
Table1



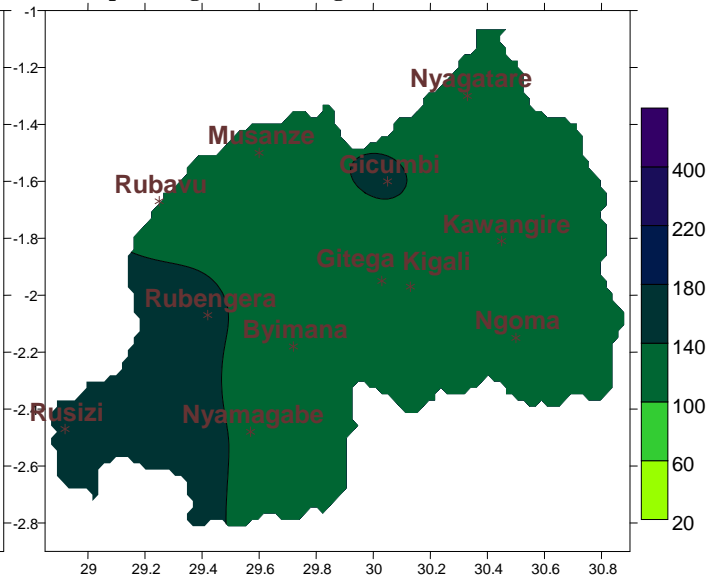
Plot1

b) **Rainfall analysis:** The maps “Map 1 and 2” below show the cumulative rainfall recorded during March_2018 and the long term mean (LTM) of cumulative rainfall for the same period
 The maps “map 3 and 4” show the cumulative rainfall recorded during February_2018 the long term mean (LTM) of cumulative rainfall for the same period

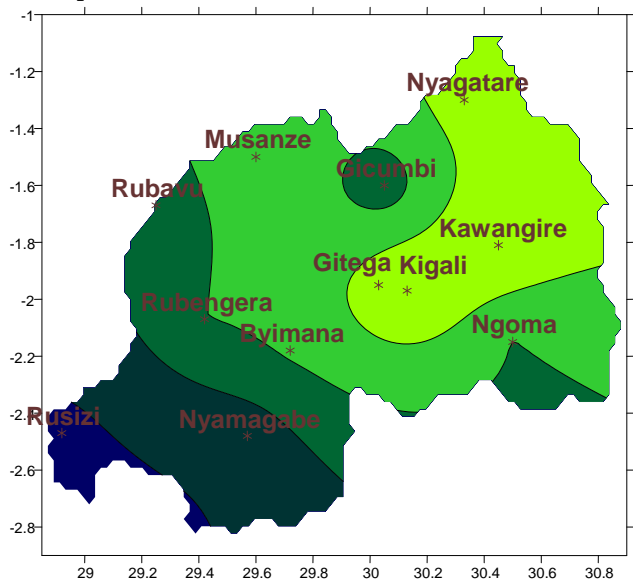
Map1: Total Rainfall (mm): Mar_2018



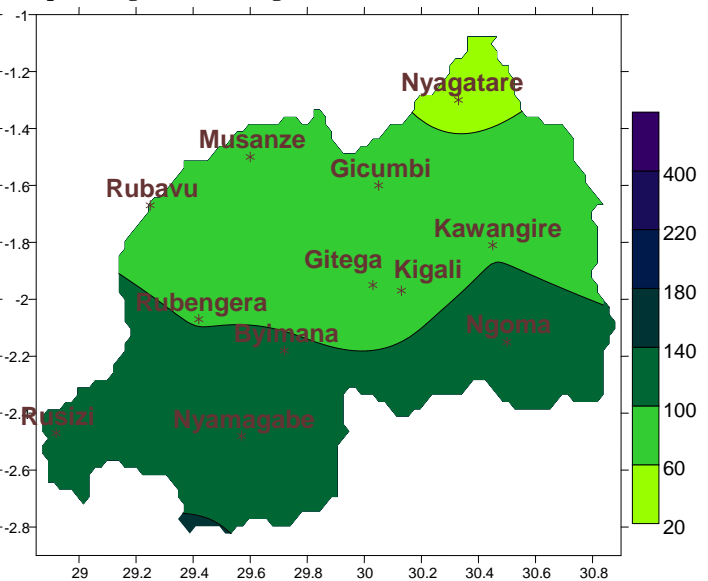
Map2: Long Term Average Rainfall (mm): Mar_LTM



Map3: Total Rainfall (mm): Feb_2018



Map4: Long Term Average Rainfall (mm): Feb_LTM

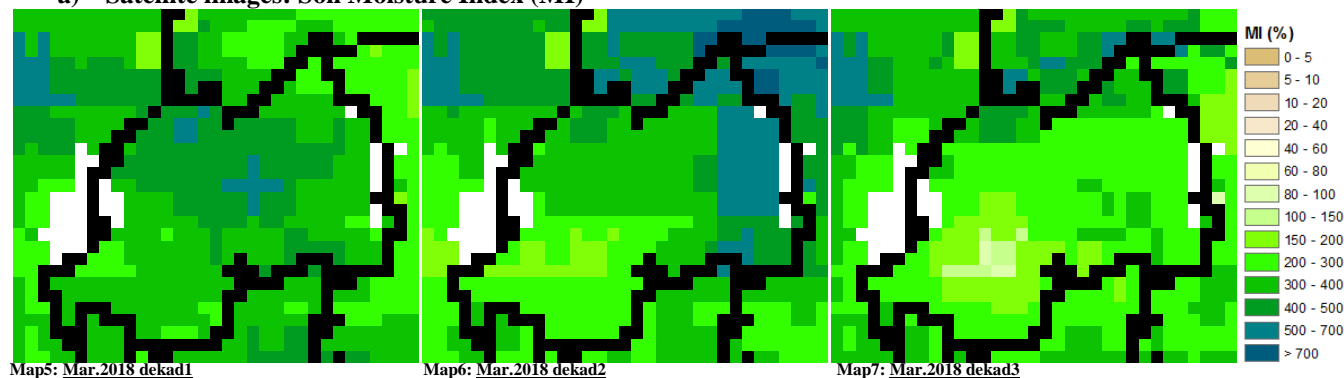


II. Detailed observed rainfall during March_2018

The rainfall during this period March_2018 was generally in the above range in comparison with the Long Term Climatological Mean (LTM) except Rusizi station with records of rainfall that was below the LTM (see Map1&2). For the cumulative rainfall amount in February_2018; we observe that; except central west; all central part of the country experienced little rains that are in the below range while the remaining part had rains that is in the normal to above range comparing with the Long Term Mean (LTM) at each site (see Map3&4)

III. Agricultural impact.

a) Satellite images: Soil Moisture Index (MI)

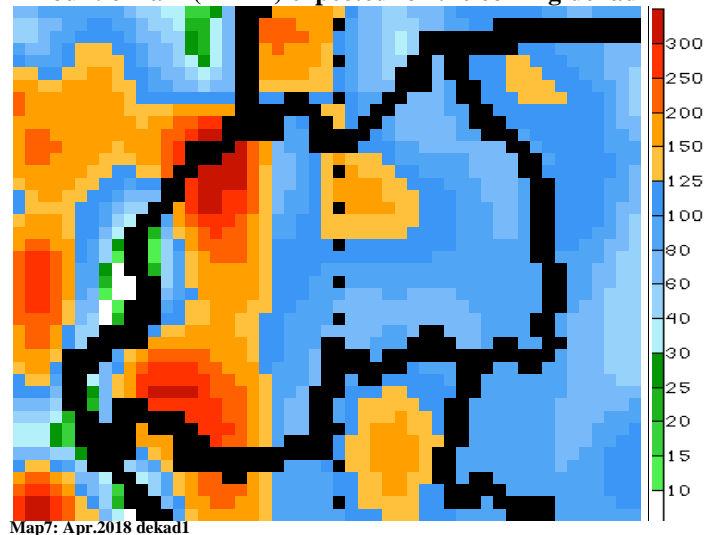


During March_2018 the satellite derived moisture index showed an increase for dekad2 as results of rainfall events that occurred during the midways of the month of March; though it also show a decrease for dekad3; but the moisture is still favorable for a variety of crops (Map 5, 6&7; indicate the first, second and third dekad respectively)

b) Rainfall forecast for April_2018

Wet conditions of rain are expected to prevail over most parts of country; where the first dekad is expected to have more rains over the west (over the Congo-Nil Crest) and less over the east

Amount of rain (in mm) expected for the coming dekad



N.B: This forecast should be used in conjunction with the daily (24-hour), Three (3), Five (5) and Seven (7) days forecasts issued by the Rwanda Meteorology Agency (Meteo Rwanda)