



**Ingingo z'ingenzi:**

- o **Igiteranyo cy'imvura** yabonetse mu gice cya mbere (taliki 01-10) Werurwe\_2019; cyagaragaje imvura yabaye nyinshi kurusha iyari isanzwe imenyereye ku bupimiro bwa Ngoma, Nyagatare ndetse na Gicumbi; ahandi ku bundi bupimiro hagaragara imvura nke ku yari isanzwe ihaboneka;
- o Amashusho y'icyogajuru yerekana ubutaka buhehereye ku kigero cyiza hose mu gihugu kubera ibihe by'imvura byabonetse muri iyi minsi 20 ishize
- o **Mu gice cya kabiri (taliki 11-20) Werurwe\_2019;** hateganyijwe **imvura** izaboneka mu bice byose by'igihugu kandi ikaba izaba isanzwe ugereranyije n'iyoy dusanzwe tubona mu gihugu hose muri icyo minsi

**I. Iriburiro**

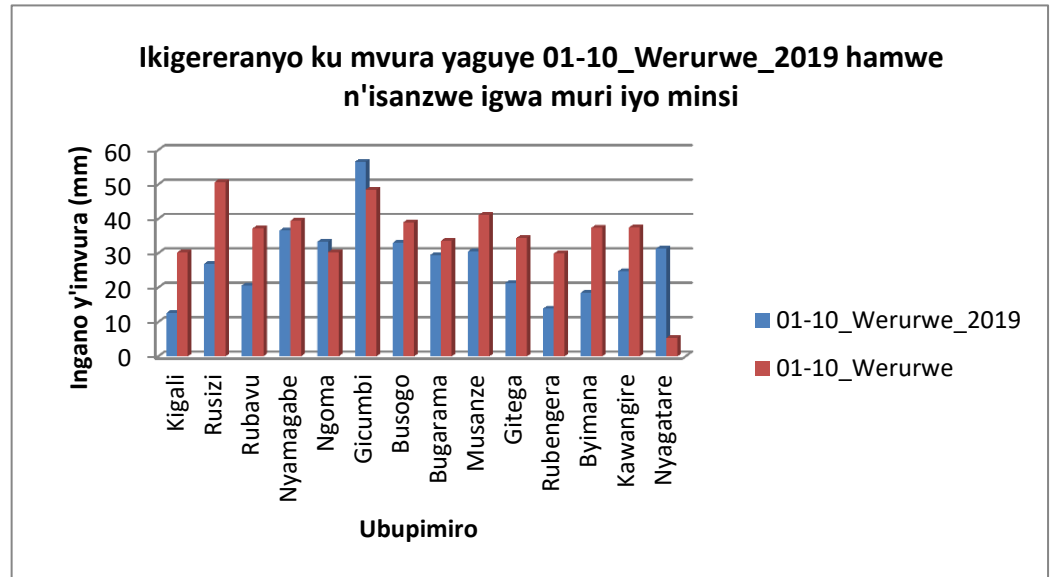
Igiteranyo cy'imvura yaguye mu gice cya mbere cya Werurwe\_2019; cyagaragaje imvura yabaye nyinshi kurusha iyari isanzwe imenyereye ku bupimiro bwa Ngoma, Nyagatare ndetse na Gicumbi; ahandi ku bundi bupimiro hagaragara imvura nke ku yari isanzwe ihaboneka muri icyo minsi

- a) Imbonerahamwe zikurikira zirerekana ikigereranyo ku mvura yaguye mu 01-10\_Werurwe\_2019 ndetse n'imvura dusanzwe tubona muri icyo minsi kuri buri bupimiro

**Igiteranyo cy'imvura kuri buri bupimiro (muri mm)**

Ubupimiro	01-10_Werurwe_2019	01-10_Werurwe
Kigali	12.6	30.2
Rusizi	26.9	50.7
Rubavu	20.6	37.2
Nyamagabe	36.6	39.4
Ngoma	33.3	30.3
Gicumbi	56.6	48.5
Busogo	33.0	39.0
Bugarama	29.5	33.6
Musanze	30.5	41.1
Gitega	21.4	34.4
Rubengera	13.9	29.9
Byimana	18.5	37.4
Kawangire	24.8	37.5
Nyagatare	31.3	5.4

Imbonerahamwe ya1



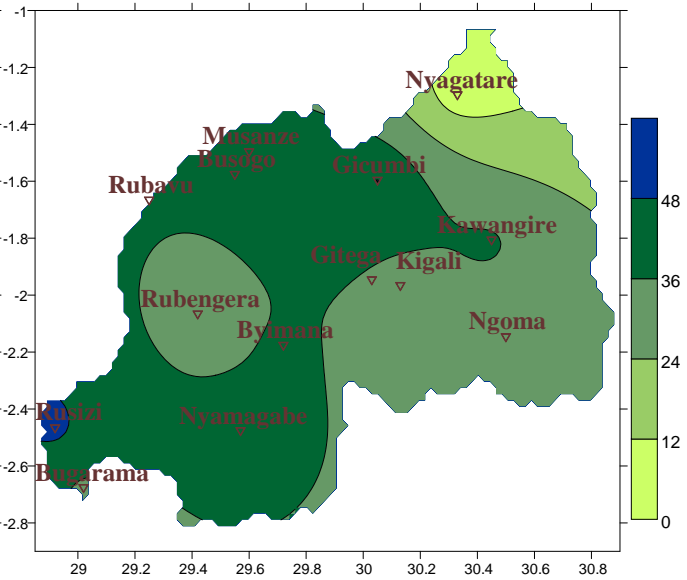
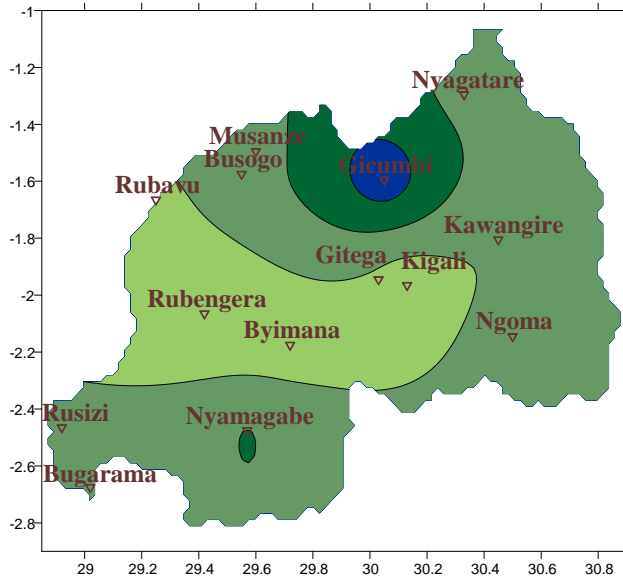
Igishushanyo 1

b) **Ubusesenguzi ku mvura yaguye:** Ikarita zikurikira (iya **1&2**) zigereranya igiteranyo cy'imvura yaguye 01-10\_Werurwe\_2019 ndetse n'imvura isanzwe igwa muri iyo minsi

Naho Ikarita **3&4** zikerekana igiteranyo cy'imvura yaguye 21-28\_Gashyantare\_2019 ndetse n'isanzwe igwa muri ayo mataliki

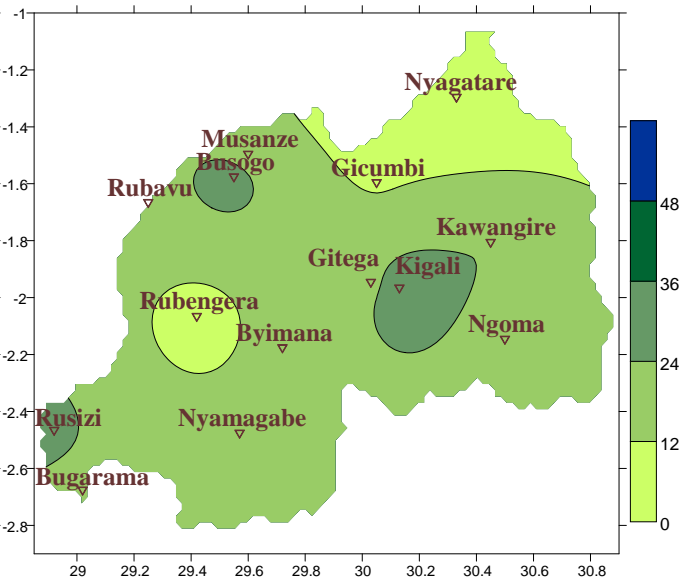
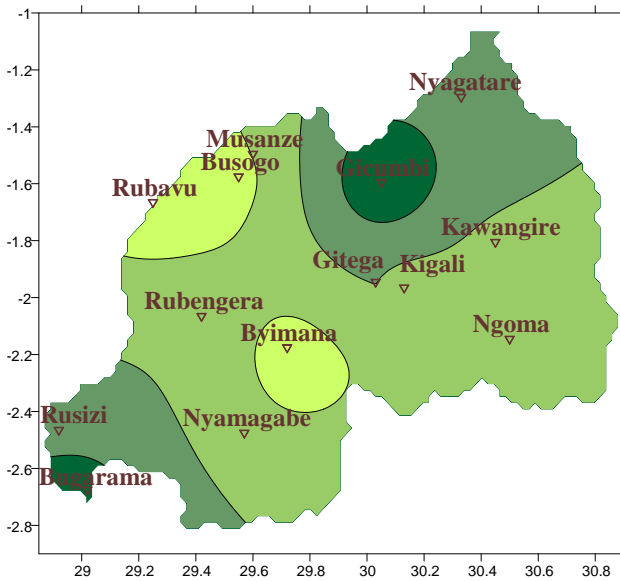
**Ikarita ya1: Imvura yaguye (mm): 01-10\_Werurwe\_2019**

**Ikarita ya2: Imvura isanzwe igwa (mm): 01-10\_Werurwe**



**Ikarita ya1: Imvura yaguye (mm): 21-28\_Gashyantare\_2019**

**Ikarita ya2: Imvura isanzwe igwa (mm): 21-28\_Gashyantare**

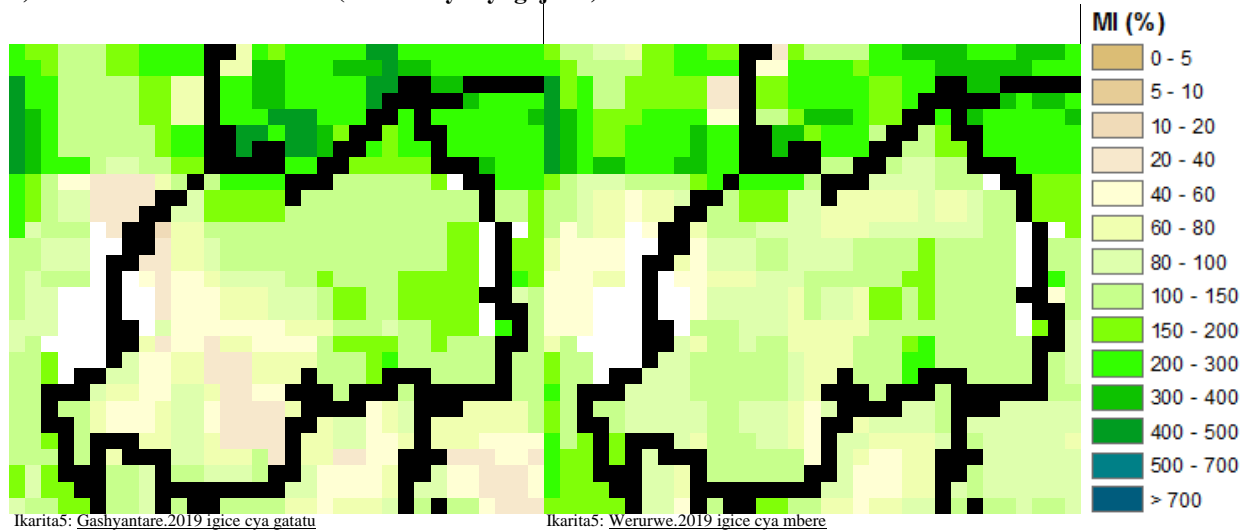


**II. Uko imvura yaguye hirya no hino mu gihugu mu mataliki ya 01-10\_Werurwe\_2019 mu buryo burambuye**

Igiteranyo cy'imvura yabonetse mu mataliki ya 01-10\_Werurwe\_2019 cyagaragaje imvura yabaye nyinshi kurusha iyari isanzwe imenyereye ku bupimiro bwa Ngoma, Nyagatare ndetse na Gicumbi; ahandi ku bundi bupimiro hagaragara imvura nke ku yari isanzwe ihaboneka muri iyo minsi aho ku bupimiro bwa Gicumbi ariho habonetse imvura nyinshi ingana na mm56.6 (reba **Ikarita1&2** ndetse n'**Imbonerahamwe1**); naho igiteranyo cy'imvura yabonetse mu mataliki ya 21-28\_Gashyantare\_2019; cyagaragaje imvura iri ku kigero cy'isanzwe kuri buri bupimiro uretse mu majyaruguru y'Uburasirazuba habonetse imvura nyinshi kurusha iyari isanzwe ihaboneka muri iyo minsi (reba **Ikarita3&4**)

### III. Ingaruka ku Buhinzi

#### a) Ububobere bw'ubutaka (amafoto y'icyogajuru)



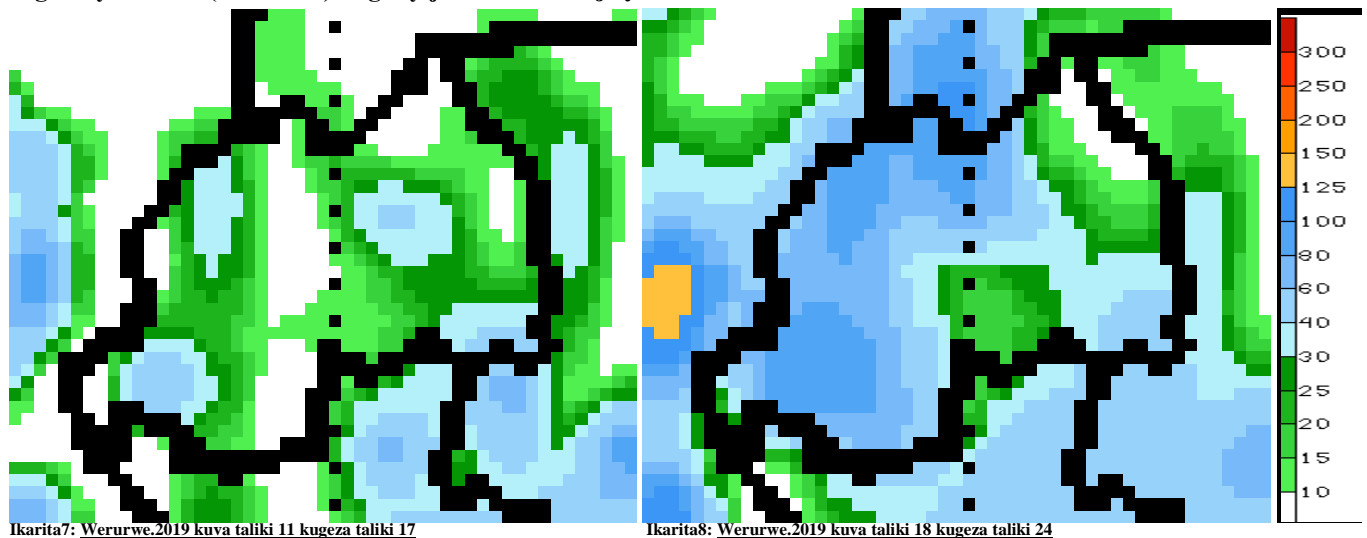
Kuva taliki ya 21\_Gashyantare kugeza 10\_Werurwe\_2019; amashusho y'icyogajuru yerekana ubutaka buhehereye kandi bubereye ibihingwa byinshi henshi mu gihugu kubera ibihe by'imvura twagize muri icyo minsi 20 ishize (reba **Ikarita 5&6**)

#### b) Iteganagihe ry'igice cya kabiri Werurwe\_2019

Mu gice cya kabiri cya Werurwe\_2019; hateganijwe imvura izaba iri ku kigereranyo cy'iyari isanzwe iboneka kuri buri bupimiro ndetse ikazaba iri ku kigero kimwe n'imvura twabonye mu gice cya mbere cy'uku kwezi:

- **Umujyi wa Kigali:** hateganijwe kuboneka imvura iri ku kigero cya mm20 kugeza kuri mm60 mu byumweru bibiri
- **Intara y'Uburasirazuba:** hateganijwe kuboneka imvura nke kugeza ku kigero cya mm80 z'imvura mu byumweru bibiri
- **Intara y'Amajyepfo:** hateganijwe kuboneka imvura iri ku kigero cya mm40 kugeza kuri mm100 mu byumweru bibiri
- **Intara y'Uburengerazuba:** hateganijwe kuboneka imvura iri ku kigero cya mm60 kugeza kuri mm100 mu byumweru bibiri
- **Intara y'Amajyaruguru:** hateganijwe kuboneka imvura iri ku kigero cya mm40 kugeza kuri mm100 mu byumweru bibiri

#### Ingano y'imvura (muri mm) iteganyijwe mu minsi iye ya Werurwe\_2019



**N.B:** Iri teganyagihe rigomba kwifashishwa hagendewe kurisohoka buri munsu (buri masaha 24), iry'iminsi itatu (3), itanu (5) ndetse n'iry'iminsi irindwi (7) ritangwa n'Ikigo cy'Ubumenyi bw'Ikirere (Meteo Rwanda)