



Highlights:

- **The cumulative rainfall** for dekad1_May_2017 was generally widespread except some localized places where the recorded rainfall was below the Long Term Mean (LTM).
- **The soil moisture is still favourable** was quite high spreading widely across the whole country.
- The rainfall during dekad2_May_2017 is expected to **decrease in most places** of the country particularly eastern and central parts.

I. Introduction

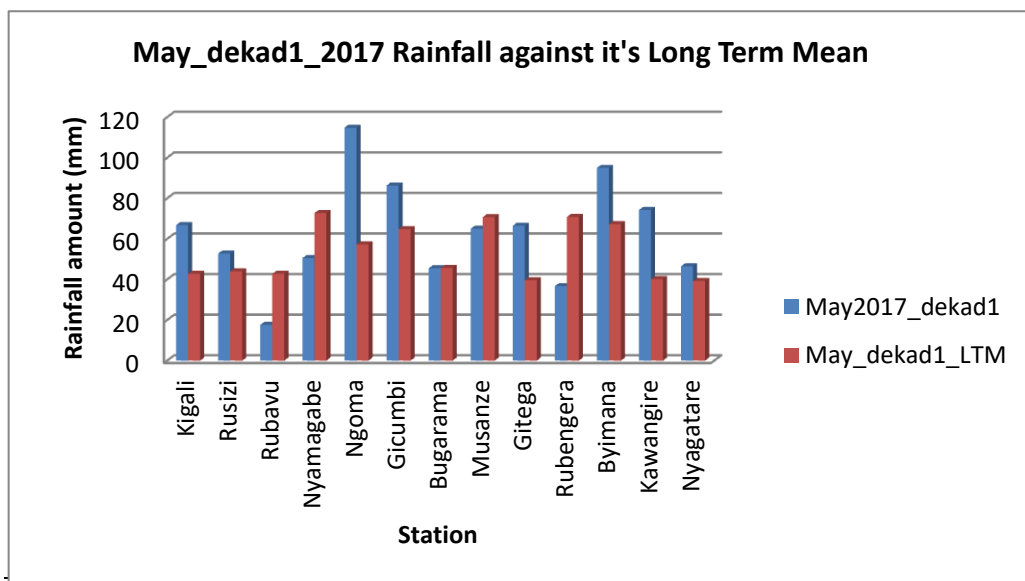
The rainfall during dekad1_May_2017 was generally within the range of LTM (Long term Mean); however few places recorded exceptionally highest rainfall above LTM and these places include Ngoma, Gicumbi, Byimana and Kawangire, while at Rubavu, Nyamagabe, and Rubengera stations rainfall was slightly below the LTM in the area where the station is located.

a) The table and histogram below indicates the rainfall recorded during dekad1_May_2017 and its LTM:

Cumulative rainfall (in mm) recorded at different stations

Station	May2017_dekad1	May_dekad1_LTM
Kigali	66.8	42.8
Rusizi	52.8	44
Rubavu	17.6	42.8
Nyamagabe	50.5	72.7
Ngoma	114.8	57.3
Gicumbi	86.3	64.8
Bugarama	45.5	45.7
Musanze	65	70.7
Gitega	66.5	39.6
Rubengera	36.7	70.8
Byimana	95	67.3
Kawangire	74.3	40.2
Nyagatare	46.5	39.2

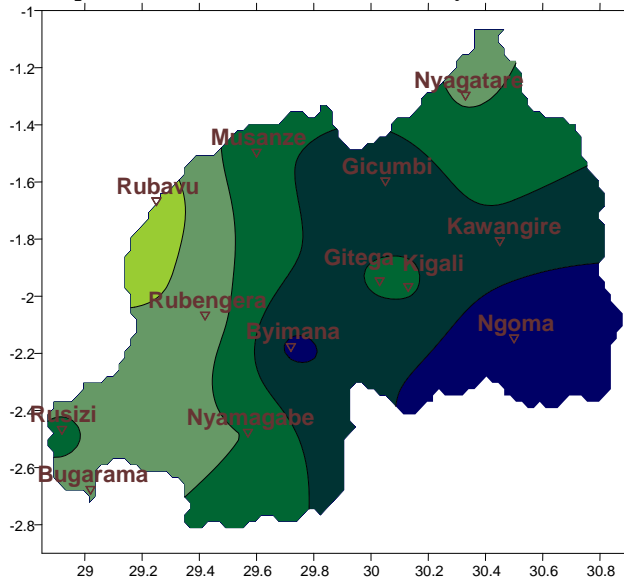
Table1



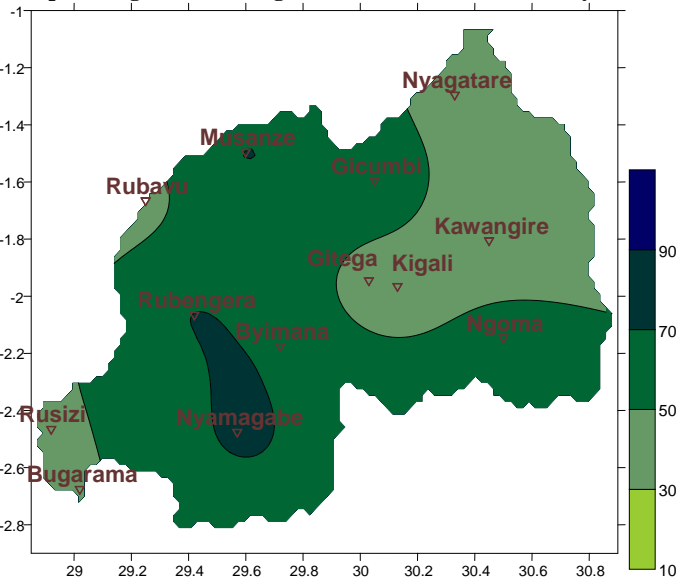
Plot1

b) **Rainfall analysis:** The maps “**Map 1 and 2**” below show the cumulative rainfall recorded during dekad1_May_2017 and its LTM of cumulative rainfall. The maps “**Map 3 and 4**” show the cumulative rainfall recorded during dekad3_April_2017 and its LTM of cumulative rainfall.

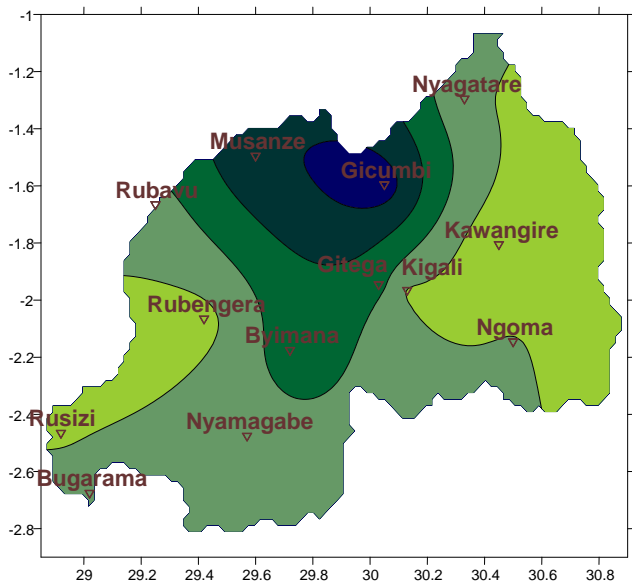
Map1: Total Rainfall (mm): dekad1_May_2017



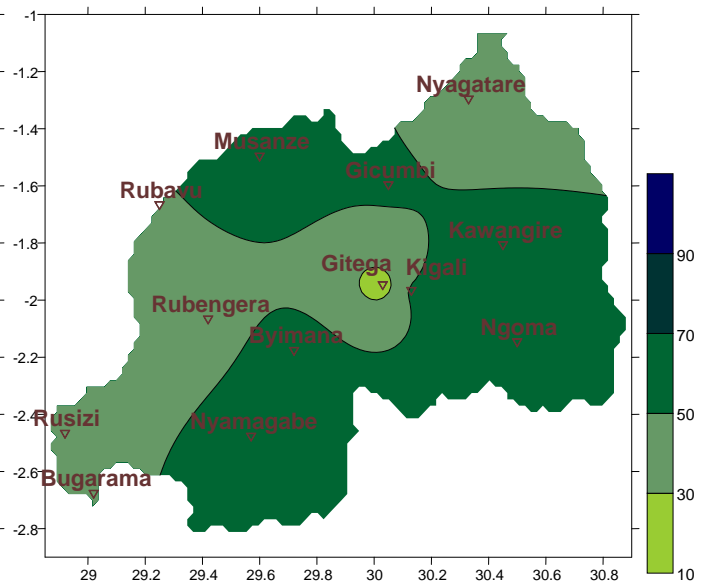
Map2: Long Term Average Rainfall (mm): dekad1_May_LTM



Map1: Total Rainfall (mm): dekad3_Apr_2017



Map2: Long Term Average Rainfall (mm): dekad3_Apr_LTM



II. Detailed observed rainfall during the dekad1_May_2017

The cumulative rainfall for dekad1_May_2017 was slightly below the LTM in the western along the high mountains of the Congo-Nil and enhanced in the eastern parts of the country (see **Map1&2**). During the dekad3 of April_2017, the rainfall was below LTM in the Eastern, Southern and Western Parts of the country however the central and northern parts recorded rainfall which was above LTM (see **Map3&4**)

a) Eastern Province

All representative stations recorded rainfall amount which was above the LTM especially at Ngoma station where the observations showed the highest record across the country within the first dekad of May_2017 of 114.8mm (see **Table1** and **Map1&2**)

b) Northern Province

All representative stations within the Province recorded rainfall that was within the range of LTM and below (see **Table1** and **Map1&2**)

c) Southern Province

All representative stations within the Province recorded rainfall that was within the range of LTM and below (see **Table1** and **Map1&2**)

d) Western Province

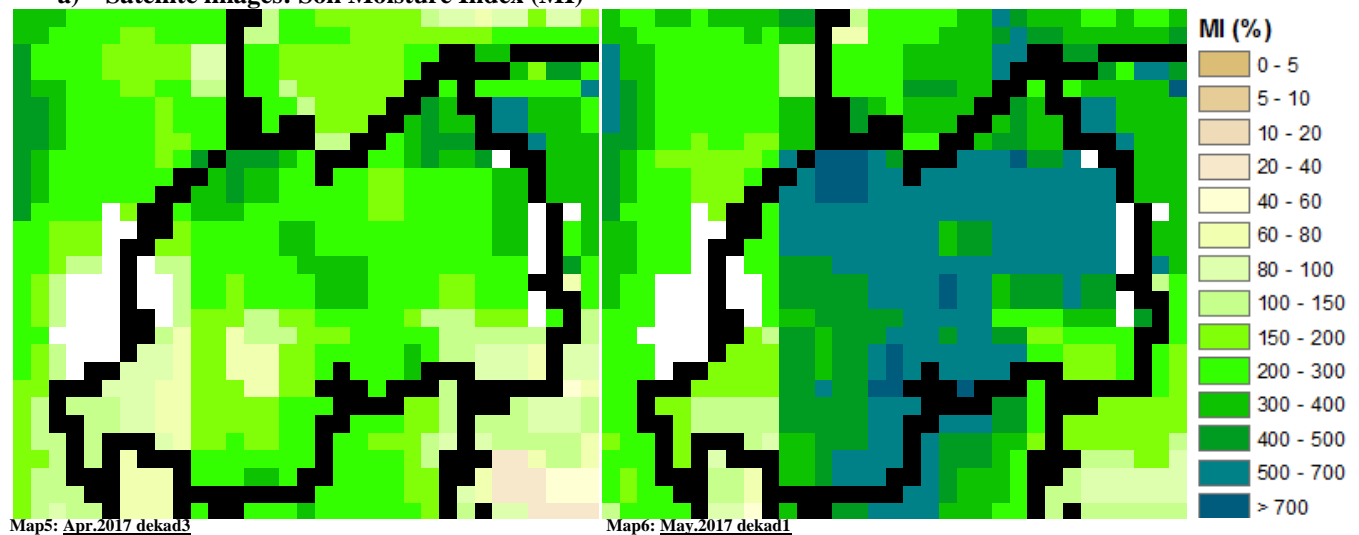
Most of the stations in western province received rainfall which was within the range LTM to above except at Rusizi and Bugarama in the south-western tip of the country recorded rainfall with highest amount (see **Table1** and **Map1&2**)

e) Kigali City

The central parts of the country recorded rainfall that was within LTM to above (see **Table1** and **Map1&2**)

III. Agricultural impact.

a) Satellite images: Soil Moisture Index (MI)



The satellite derived moisture index shows keeps on showing a progressive increase of moisture content in all parts of the country (see **Map 5&6**) resulting from widespread of rainfall.

The distribution of rains during dekad2_May_2017 is expected to decrease in comparison to what was observed in first dekad of May_2017. Farmers are advised to prepare for the reduced rains during June_2017

Rainfall forecast for May2017_dekad2

During dekad2 of May_2017 no significant increase in rainfall is expected compared to the previous dekad; generally scattered rainfall events are expected especially towards south and west

Kigali City; rainfall events are expected only in the first days of the second dekad of May_2017

Eastern Region; the first days are expected to be rainy for the whole Province, and continue raining towards the south.

Western Region; Will experience rainy conditions throughout the dekad.

Northern region; Will experience cloudy conditions associated with light rain.

Southern Region; Will experience rainy conditions throughout the dekad.

N.B: This forecast should be used in conjunction with the daily (24-hour), Three (3), Five (5) and Seven (7) days forecasts issued by the Rwanda Meteorology Agency (Meteo Rwanda)