



Ikiyamakuru ku miterere y'ibihe N°15/2018:

Taliki ya 1–31 Gicurasi 2018

Ryoherejwe kuwa 2 Kamena 2018

**Ingingo z'ingenzi:**

- o **Igiteranyo cy'imvura** yabonetse muri Gicurasi 2018; cyagaragaje imvura yabaye nyinshi mu gihugu hagati ndetse no mu Majyepfo; ahandi mu gihugu hagaragara imvura iri ku kigero cy'isanzwe igwa muri ayo mataliki
- o **Ububobere bw'ubutaka** bwaragabanutse mu bice bitagize imvura nyinshi, naho ahagaragaye imvura nyinshi nko mu majyepfo hakomeza kugaragara ubutaka buheherewe
- o **Ukwezi kwa Kamena 2018**; hateganyijwe ibihe by'izuba uretse amajyaruguru n'uburengerazuba hateganyijwe imvura nke

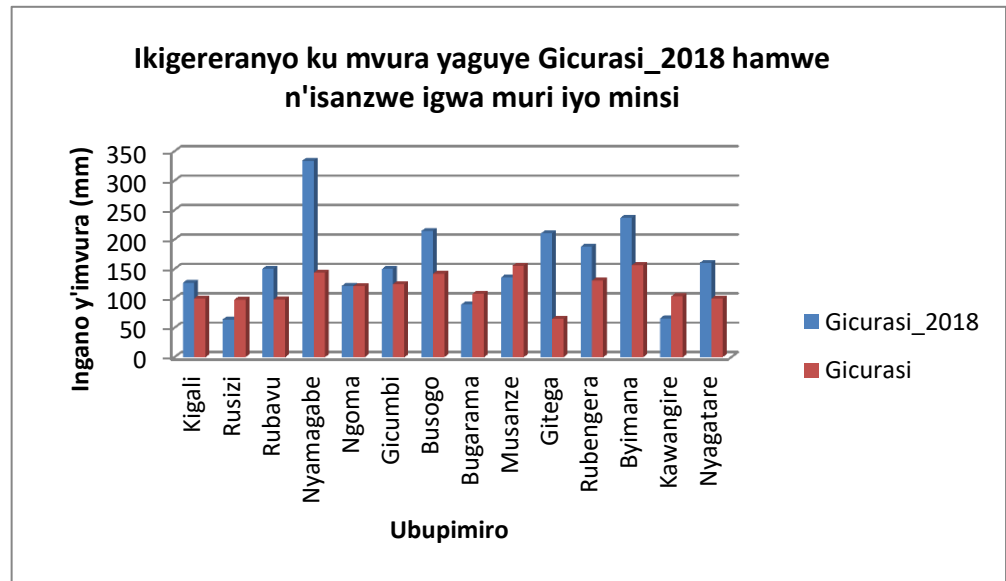
**I. Iriburiro**

Mu kwezi kwa Gicurasi; imvura yabaye nyinshi cyane mu gihugu hagati ndetse n'amajyepfo (ku bupimiro bwa Gitega, Byimana na Nyamagabe) iba nke ku bupimiro bw'uburengerazuba (ku bupimiro bwa Rusizi n'ubwa Bugarama) ndetse no mu burasirazuba (ku bupimiro bwa Kawangire); naho ahandi mu gihugu hagaragaye imvura iri ku kigero cy'imvura isanzwe igwa

- a) Imbonerahamwe zikurikira zirerekana ikigereranyo ku mvura yaguye mu Gicurasi\_2018 ndetse n'imvura dusanzwe tubona muri iyo minsi kuri buri bupimiro:

**Igiteranyo cy'imvura kuri buri bupimiro (muri mm)**

Ubupimiro	Gicuras i 2018	Gicurasi
Kigali	126.6	100.1
Rusizi (Kamembe)	64.4	97.5
Rubavu (Gisenyi)	150.4	98.7
Nyamagabe (Gikongoro)	334.0	143.4
Ngoma (Kibungo)	121.6	120.4
Gicumbi (Byumba)	149.9	124.4
Busogo	214.8	141.6
Bugarama	89.7	108.2
Musanze (Ruhengeri)	135.6	155.6
Gitega	210.4	65.3
Rubengera	187.7	130.2
Byimana	236.9	156.3
Kawangire	66.1	103.9
Nyagatare	160.6	99.5

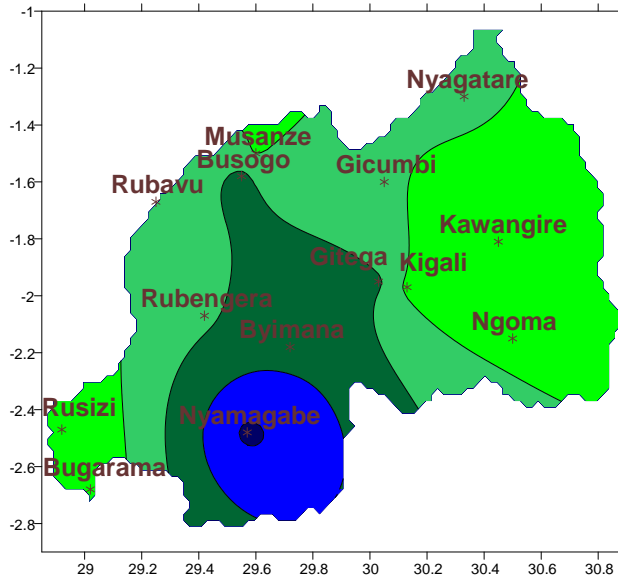


Igishushanyo 1

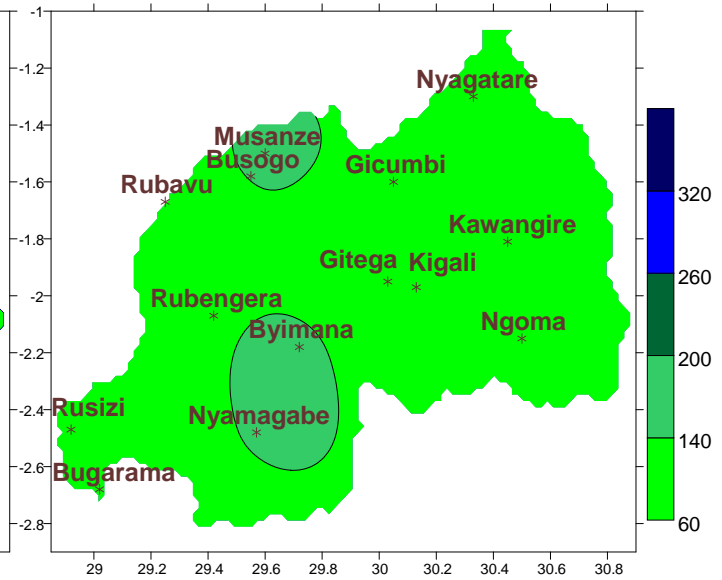
Imbonerahamwe ya 1

b) **Ubusesenguzi ku mvura yaguye:** Ikarita zikurikira (iya **1&2**) zigereranya igiteranyo cy'imvura yaguye muri Gicurasi\_2018; imvura isanzwe igwa muri iyo minsi Naho Ikarita **3&4** zikerekana igiteranyo cy'imvura yaguye muri Mata\_2018 ndetse n'isanzwe igwa muri ayo mataliki

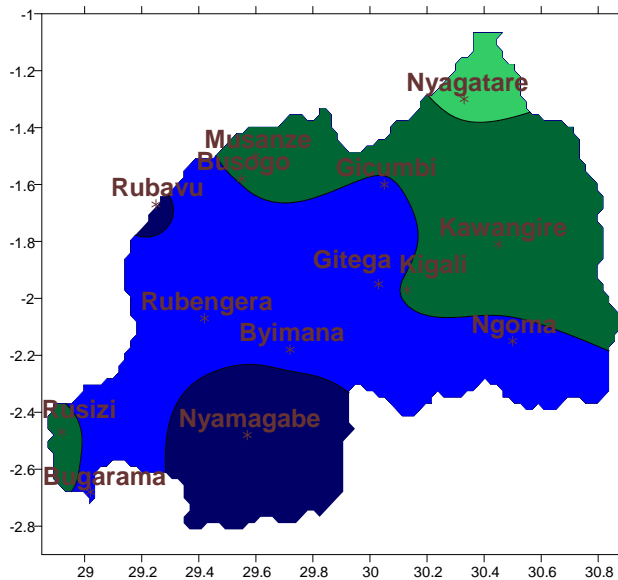
**Ikarita ya1: Imvura yaguye (mm): Gicurasi\_2018**



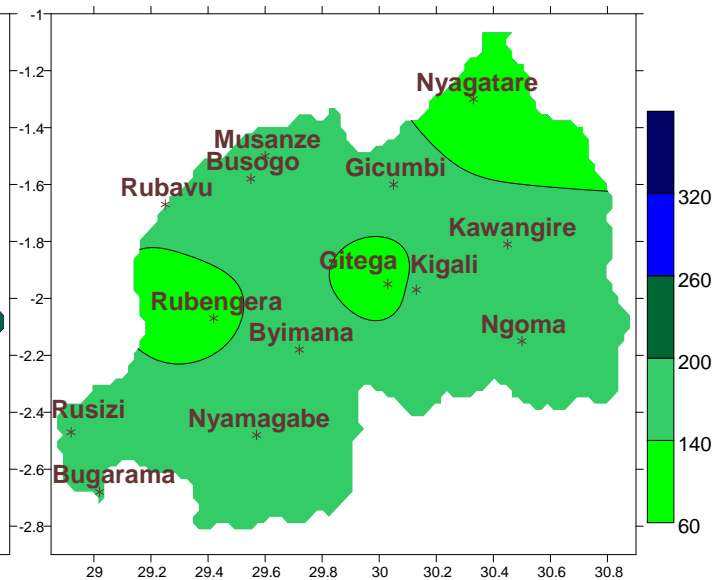
**Ikarita ya2: Imvura isanzwe igwa (mm): Gicurasi**



**Ikarita ya3: Imvura yaguye (mm): Mata\_2018**



**Ikarita ya4: Imvura isanzwe igwa (mm): Mata**

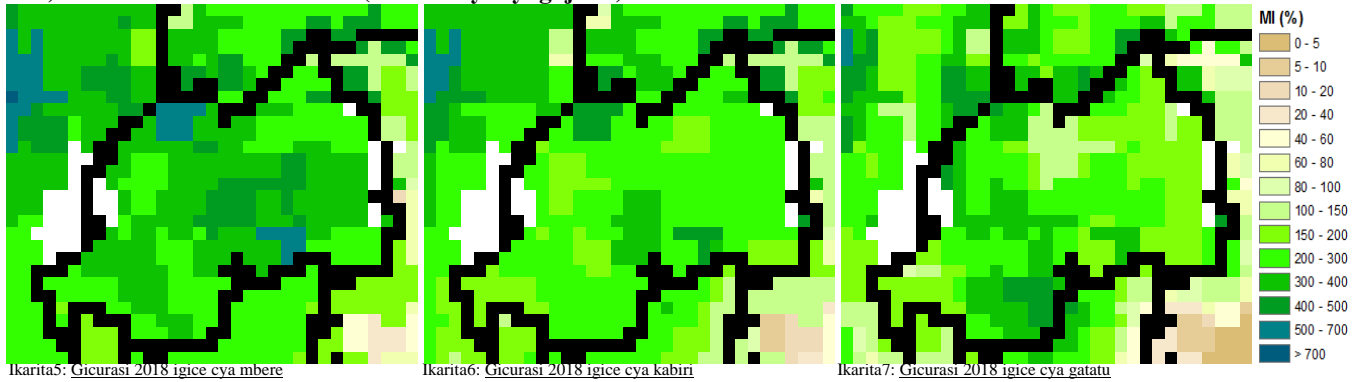


**II. Uko imvura yaguye hirya no hino mu gihugu mu Gicurasi\_2018 mu buryo burambuye**

Igiteranyo cy'imvura yabonetse muri Gicurasi; imvura yabaye nyinshi cyane mu gihugu hagati ndetse n'amajyepfo (ku bupimiro bwa Gitega, Byimana na Nyamagabe) iba nke ku bupimiro bw'uburengerazuba (ku bupimiro bwa Rusizi n'ubwa Bugarama) ndetse no mu burasirazuba (ku bupimiro bwa Kawangire); naho ahandi mu gihugu hagaragaye imvura iri ku kigero cy'imvura isanzwe igwa (reba **Ikarita1&2** n'**Imbonerahamwe1**); naho igiteranyo cy'imvura yabonetse muri Mata 2018; cyagaragaje imvura nyinshi kuyari isanzwe kuri buri bupimiro (reba **Ikarita3&4**)

### III. Ingaruka ku Buhinzi

#### a) Ububobere bw'ubutaka (amafoto y'icyogajuru)



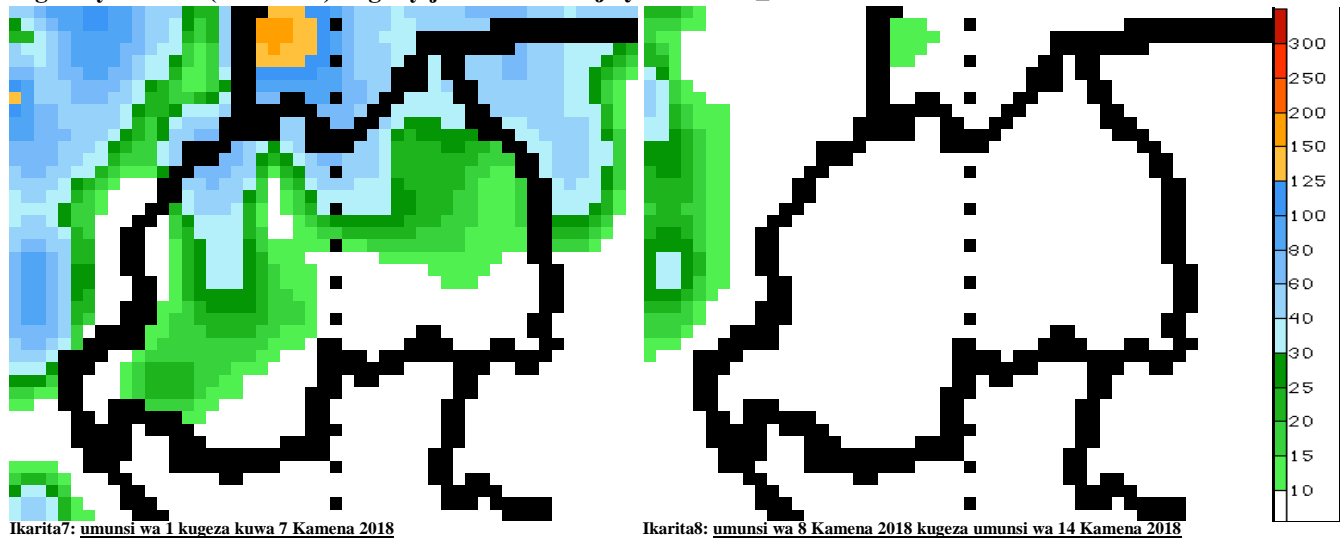
Mu Gicurasi\_2018; amashusho y'icyogajuru yerekana ubuhehere bwagabanutse mu bice bitagize imvura nyinshi, naho ahagaragaye imvura nyinshi nko mu majyepfo hakomeza kugaragara ubutaka buhehereye (**Ikarita 5, 6&7**)

#### b) Iteganyagihe ry'ukwezi kwa Kamena 2018

Mu kwezi kwa Kamena\_2018 hateganyijwe:

- Mu Mujyi wa Kigali: imvura nke (hagati ya mm10-15) mu cyumweru cya mbere cya Kamena nyuma yacyo hakaboneka ibihe by'izuba bidafite imvura
- Intara y'Uburasirazuba: imvura nke (hagati ya mm10-15) mu cyumweru cya mbere cya Kamena mu majyepfo; ikaziyongera mu majyaruguru y'iyi Ntara (mm20-40) nyuma yacyo Intara yose ikajya mu bihe by'izuba bidafite imvura
- Intara y'Amajyepfo: imvura nke (hagati ya mm10-15) mu cyumweru cya mbere cya Kamena nyuma yacyo hakaboneka ibihe by'izuba bidafite imvura
- Intara y'Uburengerazuba: imvura nke (hagati ya mm10-15) mu cyumweru cya mbere cya Kamena mu majyepfo; ikaziyongera mu majyaruguru y'iyi Ntara (mm20-40) nyuma yacyo Intara yose ikajya mu bihe by'izuba bidafite imvura
- Intara y'Amajyaruguru: imvura iringaniye (hagati ya mm20-40) mu cyumweru cya mbere cya Kamena nyuma yacyo hakaboneka ibihe by'izuba bidafite imvura

#### Ingano y'imvura (muri mm) iteganyijwe mu minsi iye ya Gicurasi\_2018



**N.B:** Iri teganyagihe rigomba kwifashishwa hagendewe ku risohoka buri munsi (buri masaha 24), iry'iminsi itatu (3), itanu (5) ndetse n'iry'iminsi irindwi (7) ritangwa n'Ikigo cy'Ubumenyi bw'Ikirere (Meteo Rwanda)