



Highlights:

- **The cumulative rainfall** for dekad2_October_2017 was normal to above except at some stations of the north and south-west (Musanze, Rusizi and Bugarama) of the country.
- **The soil moisture index shows an increase** in moisture content country wide especially the east and southern parts due to the widespread of rainfall events that occurred during the second dekad of October_2017
- **The rainfall during dekad3 October _2017** is expected to be normal for the whole country and slightly reduce compared to what was observed during the 2nd dekad of October_2017

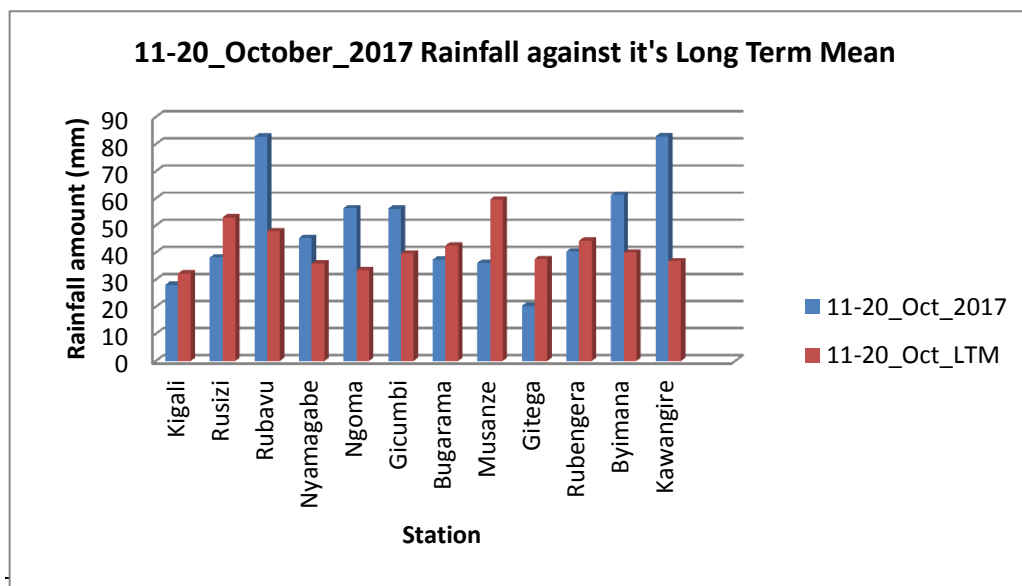
I. Introduction

The second dekad of October_2017 shows high rainfall amount at most of the representative stations; but also a below normal situation at some stations (Gitega, Musanze, Rusizi and Bugarama) but generally the rains were ranging within Long Term Mean (LTM) and above which resulted in increase in soil moisture country wide.

a) The table and histogram below indicates the rainfall recorded during dekad2 October_2017:

Cumulative rainfall (in mm) recorded at different stations

Station	dekad 2_Oct_2017	dekad2_Oct_LTM
Kigali	28.1	32.3
Rusizi (Kamembe)	38.2	53.0
Rubavu (Gisenyi)	82.8	47.9
Nyamagabe (Gikongoro)	45.4	36.0
Ngoma (Kibungo)	56.4	33.5
Gicumbi (Byumba)	56.2	39.7
Bugarama	37.4	42.6
Musanze (Ruhengeri)	36.2	59.6
Gitega	20.3	37.6
Rubengera	40.4	44.4
Byimana	61.3	40.0
Kawangire	82.9	36.8

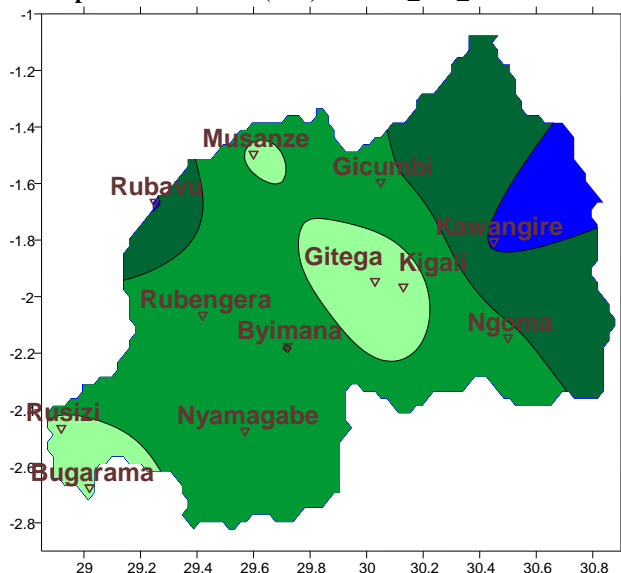


Plot1

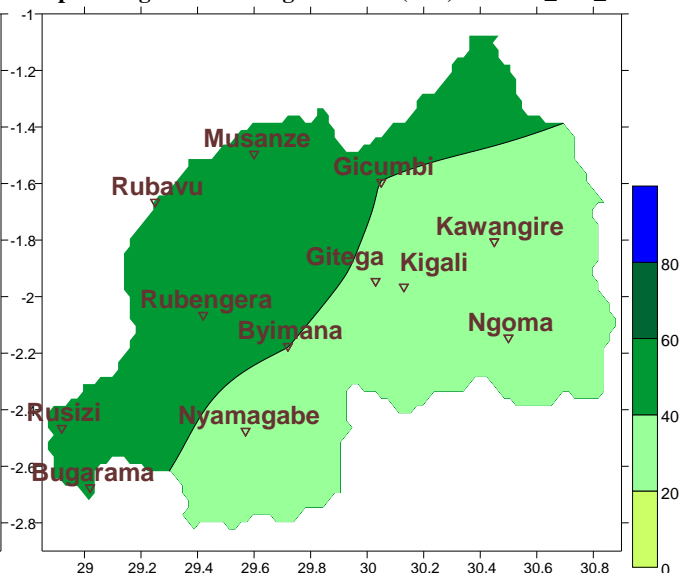
Table1

- b) **Rainfall analysis:** The maps “**Map 1 and 2**” below show the cumulative rainfall recorded during dekad2_October_2017 and the LTM cumulative rainfall for the same period. The maps “**map 3 and 4**” show the cumulative rainfall recorded during dekad1_October_2017 and the LTM cumulative rainfall for the same period.

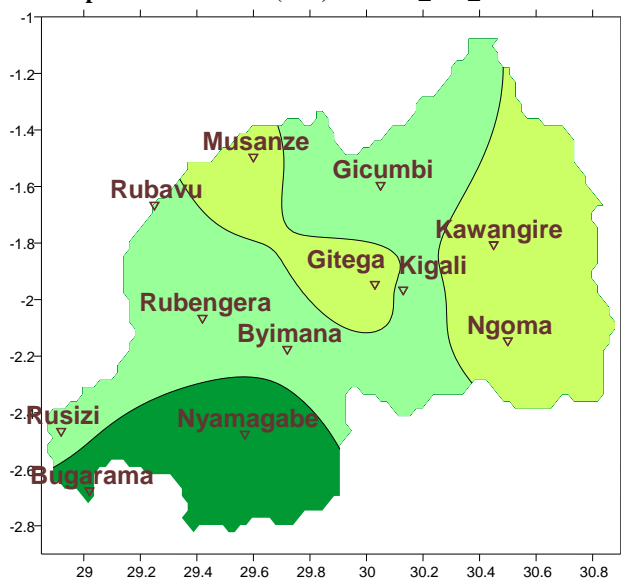
Map1: Total Rainfall (mm): dekad2_Oct_2017



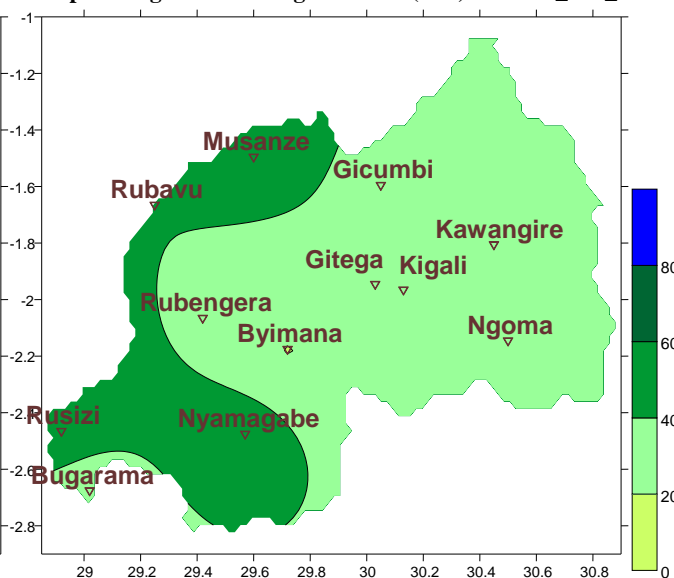
Map2: Long Term Average Rainfall (mm): dekad2_Oct_LTM



Map1: Total Rainfall (mm): dekad1_Oct_2017



Map2: Long Term Average Rainfall (mm): dekad1_Oct_LTM

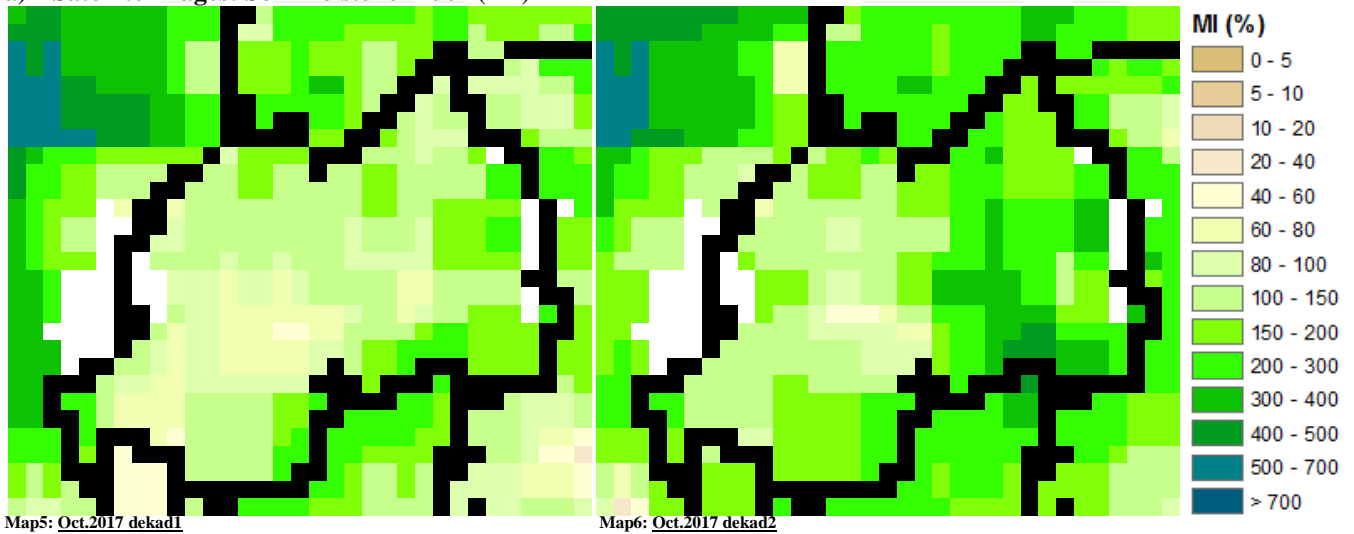


II. Detailed observed rainfall during the dekad2_October_2017

The second dekad of October_2017 shows high rainfall amount over most representative stations, but also a below normal situation at some localized stations in central, north and south-west parts of the country; the rains recorded ranged from LTM to above (see **Map1&2** and **Table1**). The LTM cumulative rainfall for dekad1_October_2017 shows that the eastern, central and received less rainfall which was below the range of LTM (see **Map1&2** and **Table1**)

III. Agricultural impact.

a) Satellite images: Soil Moisture Index (MI)



During dekad2 of October_2017; the satellite derived soil moisture index showed a high increase in soil moisture content over the eastern parts of the country (due to increase in rainfall amount during dekad2 of October_2017); the increase in spread was generally all over the country due to the spatial distribution of rainfall (see **Map 5&6**).

b) Rainfall forecast for dekad3 of October_2017

The rains during dekad3 of October_2017 are expected to be widely distribution across the country.

N.B: This forecast should be used in conjunction with the daily (24-hour), Three (3), Five (5) and Seven (7) days forecasts issued by the Rwanda Meteorology Agency (Meteo Rwanda)