



Highlights:

- **The cumulative rainfall** for October_2018 was in the below normal range over the south-eastern part of Rwanda and normal elsewhere within the country
- **A favorable soil moisture content** within the first and second dekad due to good rains that were received during the two dekads
- The rains during November_2018 are expected to keep the same weather pattern as observed in the **October_2018**

I. Introduction

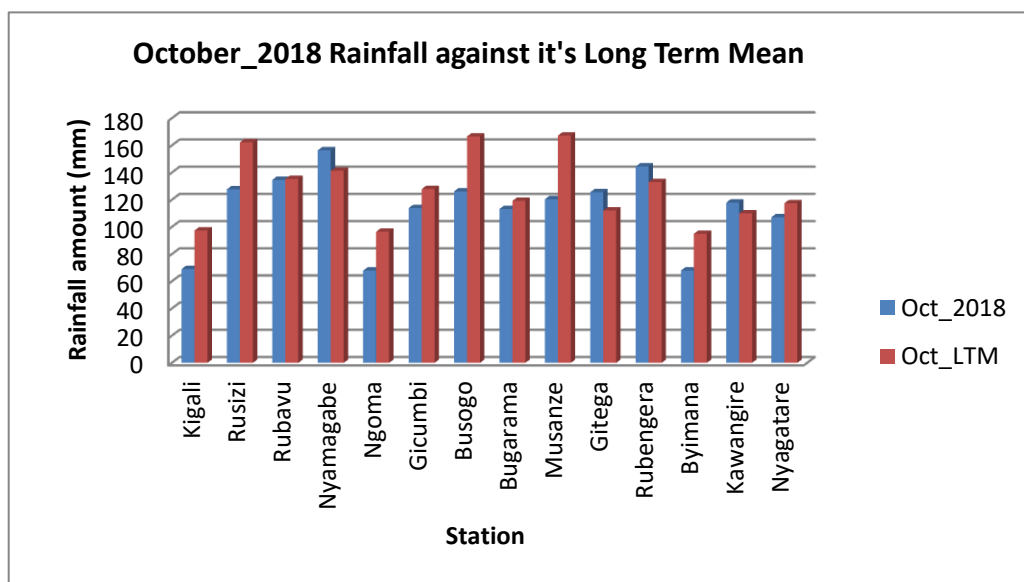
The rainfall during the month of October_2018 was in the below normal range over the south-eastern part of Rwanda and normal elsewhere within the country

a) The table and histogram below indicates the rainfall recorded during October_2018 and its Long Term Mean (LTM):

Cumulative rainfall (in mm) recorded at different stations

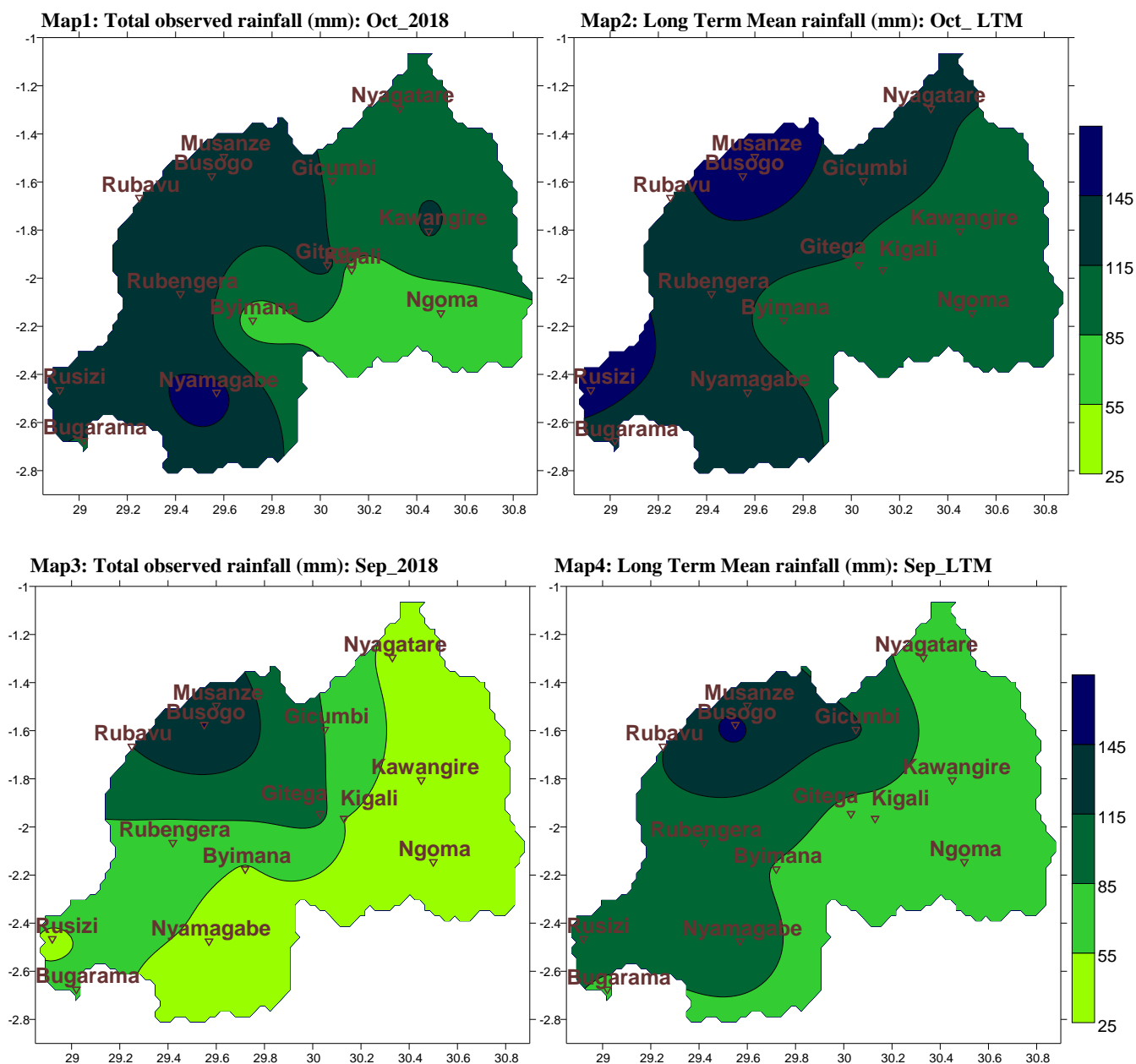
Station	Oct_2018	Oct_LTM
Kigali (Kanombe)	69.0	97.4
Rusizi (Kamembe)	127.7	162.2
Rubavu (Gisenyi)	134.7	135.3
Nyamagabe (Gikongoro)	156.4	141.3
Ngoma (Kibungo)	67.9	96.5
Gicumbi (Byumba)	113.9	127.8
Busogo	126.2	166.6
Bugarama	113.2	119.2
Musanze (Ruhengeri)	120.4	167.2
Gitega	125.6	112.1
Rubengera	144.5	133.1
Byimana	68.0	95.0
Kawangire	118.0	109.9
Nyagatare	107.2	117.5

Table1



Plot1

b) **Rainfall analysis:** The maps “Map 1 and 2” below shows the cumulative rainfall recorded during the month of October_2018 and the cumulative Long Term Mean (LTM) rainfall for the same period. The maps “map 3 and 4” shows the cumulative rainfall recorded during the month of September_2018 the cumulative Long Term Mean (LTM) rainfall for the same period.

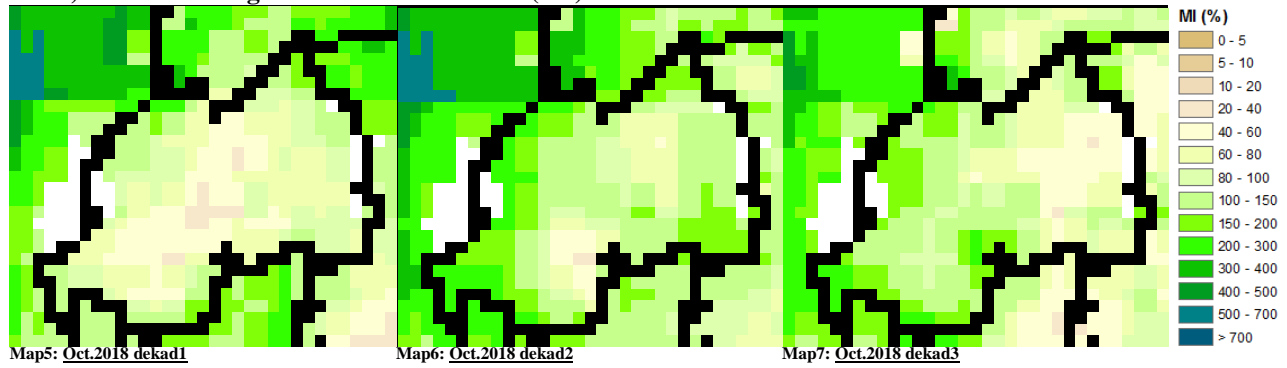


II. Detailed observed rainfall during October_2018

The rainfall during the month of October_2018 show quite good signal at most of the stations except the south-east which was in the below normal range as compared with the LTM (see Map1&2 and Table1). The extreme high rainfall amount was observed over the west; the rainfall during September_2018 was in a below normal situation except the north-western part where the records are showing a normal situation in comparison with the LTM at all stations with the northwest being more wet compared to the rest of the country (see Map3&4)

III. Agricultural impact.

a) Satellite images: Soil Moisture Index (MI)



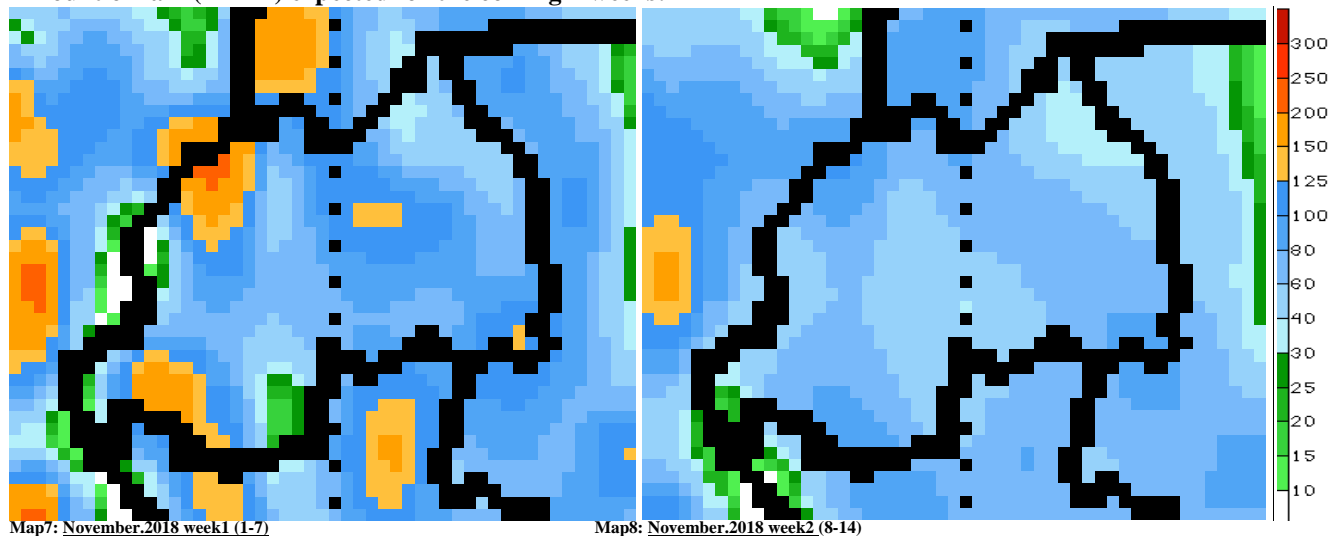
During October_2018 the satellite derived moisture index is showing good signals of the moisture content for all three dekads especially the second and the third (last) this was associated with widespread of rainfall during the last two dekads of October 2018 (Map 5, 6&7)

b) Rainfall forecast for November_2018

The wet conditions are expected to prevail country wide; whereby during the first and week of October_2018 the widespread well distributed rain is observed country wide

- Kigali City: expected to receive 60 to 150mm of rainfall within the two coming weeks
- Eastern Province: expected to receive 60 to 100mm of rainfall within the two coming weeks
- Southern Province: expected to receive 40 to 100mm of rainfall within the two coming weeks
- Western Province: expected to receive 100 to 200mm of rainfall within the two coming weeks
- Northern Province: expected to receive 80 to 200mm of rainfall within the two coming weeks

Amount of rain (in mm) expected for the coming 2 weeks:



N.B: This forecast should be used in conjunction with the daily (24-hour), Three (3), Five (5) and Seven (7) days forecasts issued by the Rwanda Meteorology Agency (Meteo Rwanda)