



## **SEASONAL FORECAST FOR MARCH-APRIL- MAY (MAM) 2024, N° 66**

The Rwanda Meteorology Agency (METEO RWANDA) is pleased to release the seasonal climate outlook forecast for the March to May (MAM) rainfall season of 2024. This forecast is based on extensive analysis of the atmospheric and oceanic conditions, which provided valuable information for planning and decision-making purposes. The National consensus on climate outlook for the March to May 2024 season indicates higher chances of above normal rainfall conditions influenced by the global, regional and local patterns.

The key factors influencing rainfall during MAM 2024 season are the persistent El Nino conditions in the Pacific Ocean. The ENSO episodes are usually characterized by wetter than normal rainfall over East African Region including Rwanda. The selected analogue years for MAM 2024 seasons are 2010 and 2016.

**Different districts are anticipated to receive various amounts of rainfall as follows:**

**Rainfall ranging between 300 - 400 millimetres** is expected in the northern parts of Kayonza, as well as most parts of the Gatsibo and Nyagatare Districts.

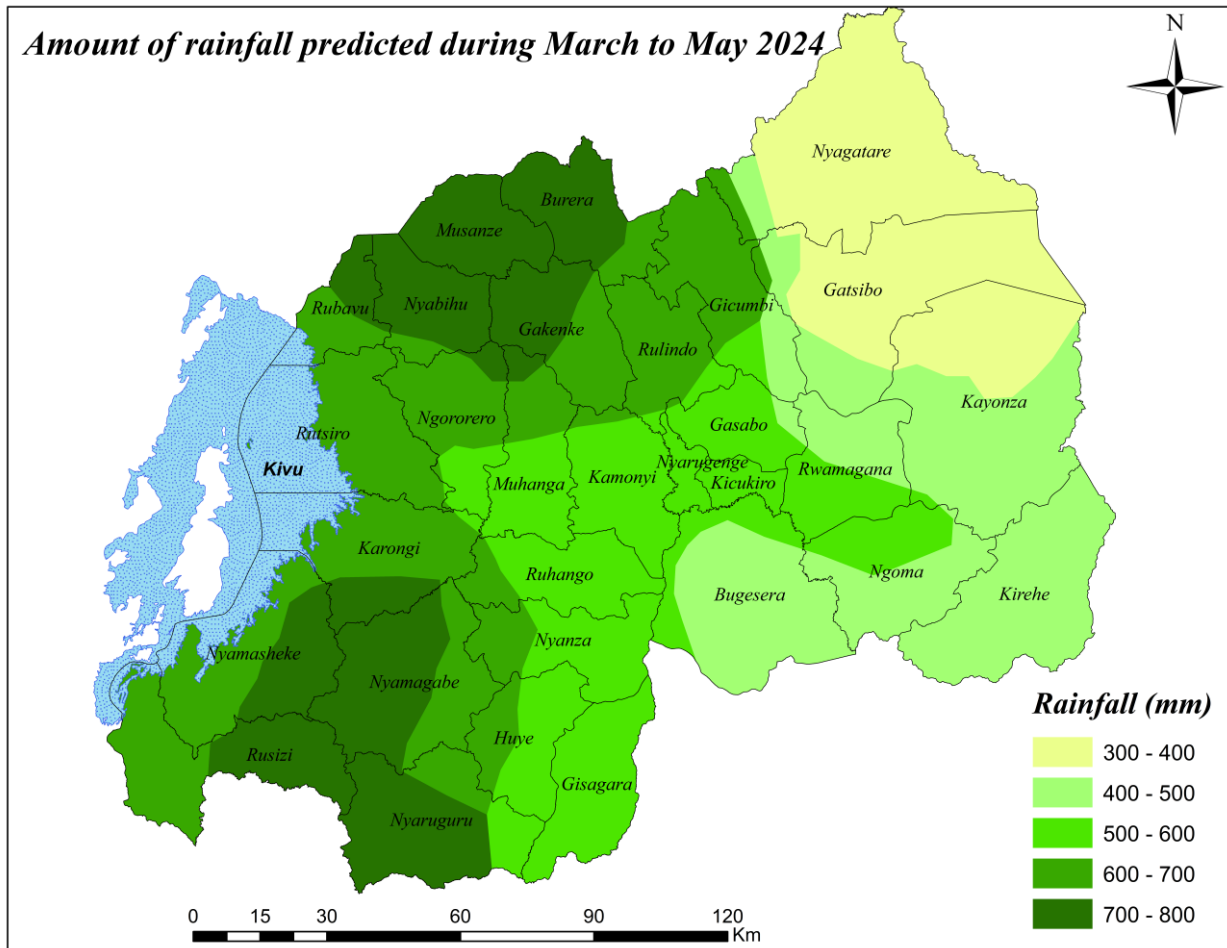
**Rainfall ranging between 400 - 500 millimetres** is expected over Kirehe district, in most parts of Kayonza, western parts of Nyagatare and Gatsibo districts, eastern and northern parts of Rwamagana, southern and western parts of Ngoma, most parts of Bugesera and south eastern parts of Gicumbi District.

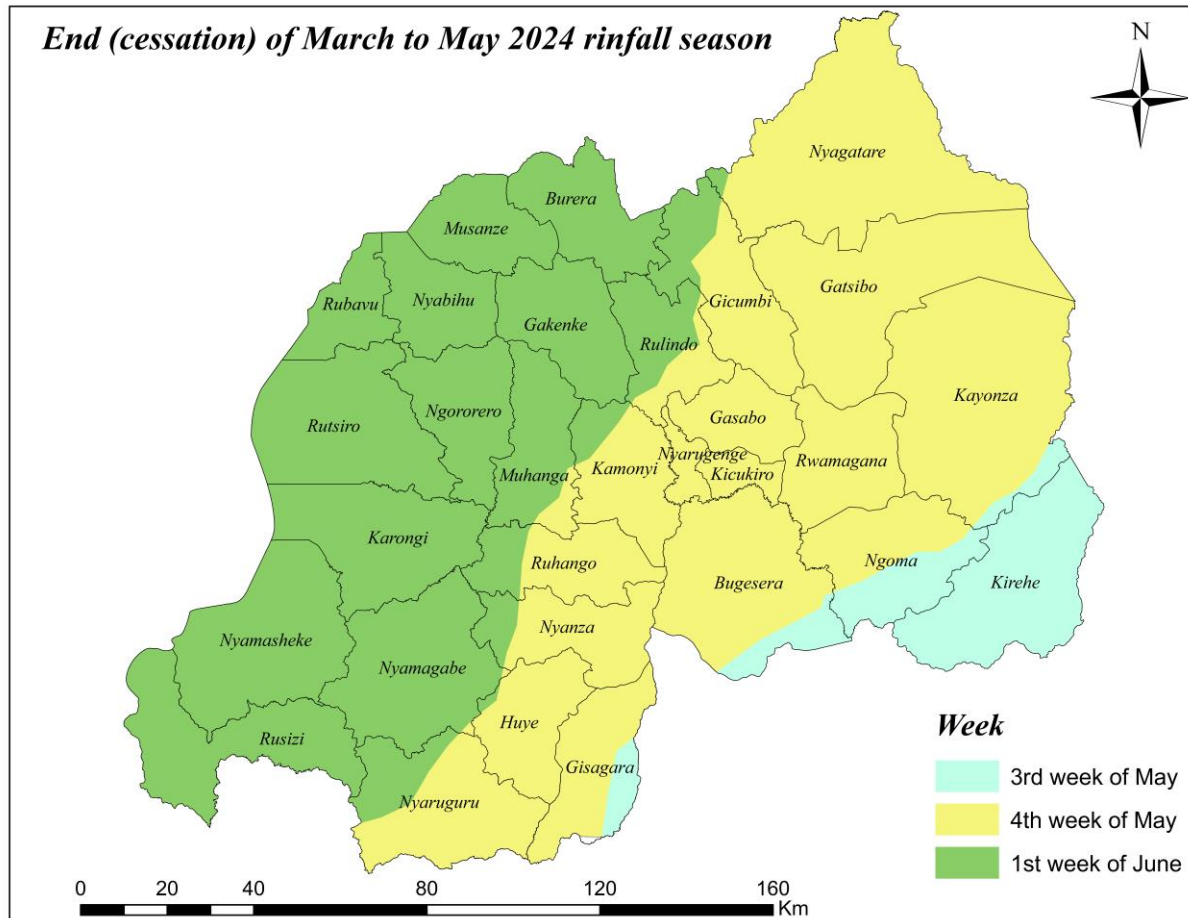
**Rainfall ranging between 500 - 600 millimetres** is expected in the City of Kigali, southern parts of Rwamagana, northern parts of Ngoma, western parts of Bugesera, most parts of Kamonyi, Gisagara, Ruhango, Nyanza, Southern parts of Muhanga and Ngororero as well as Eastern parts of Huye and Nyaruguru districts.

**Rainfall ranging between 600 - 700 millimetres** is expected over Rutsiro, parts of Rubavu, Rulindo, Gicumbi, western parts of Huye, Nyamasheke, Rusizi and Nyanza; eastern parts of Nyamagabe, central parts of Muhanga and northern parts of Ngororero District.



Rainfall ranging between 700-800 millimetres is expected in eastern parts of Rusizi and Nyamasheke, southern parts of Karongi, western parts of Nyamagabe and Nyaruguru Districts and over Musanze and Nyabihu, northern and western parts of Gakenke and Burera, northeastern parts of Rubavu and Ndiza areas of the Muhanga District.





## THE ONSET AND THE CESSATION OF MAM 2024 RAINFALL SEASON

Due to observed rainfall from January up to February 2024 and the expected continue during upcoming March-May 2024 season.

### THE CESSATION/END OF MAM 2024 RAINFALL SEASON

- ❖ **Third week of May 2024:** The cessation (end of seasonal rainfall) is expected in Kirehe and Eastern parts of Ngoma, Gisagara and Bugesera Districts.
- ❖ **Fourth week of May 2024:** The cessation is expected on in most parts of City of Kigali, Eastern parts of Southern Province and Bugesera, Rwamagana, Kayonza and remaining parts of Ngoma Districts.
- ❖ **First week June 2024:** The cessation is expected in the Western and Northern Provinces, western parts of the Southern Province as well as in the Nyagatare District.



The forecasted rainfall amount, onset and cessation dates of MAM 2024 in different regions of the country are provided in the following table.

Province	District	Expected Rainfall Amount (mm)	Cessation Date
City of Kigali	Nyarugenge	500-600	Fourth week of May 2024
	Gasabo	500-600	Fourth week of May 2024
	Kicukiro	500-600	Fourth week of May 2024
Northern Province	Musanze	700-800	First week of June 2024
	Most parts of Burera	700-800	First week of June 2024
	East of Burera	600-700	
	Most parts of Gicumbi	600-700	First week of June 2024
	South west of Gicumbi	500-600	Fourth week of May 2024
	South east of Gicumbi	400-500	
	Most parts of Rulindo	600-700	First week of June 2024
	South of Rulindo	500-600	Fourth week of May 2024
	South & West of Gakenke	700-800	First week of June 2024
Other parts of Gakenke	600-700		
Southern Province	Most parts of Kamonyi	500-600	Fourth week of May 2024 & First week of June 2024
	North of Kamonyi	600-700	
	Most parts of Muhanga	500-600	First week of June 2024 & Fourth week of May 2024 in south east
	Central parts of Muhanga	600-700	
	Ndiza area of Muhanga	700-800	
	Most parts of Ruhango	500-600	Fourth week of May 2024
	Western parts of Ruhango	600-700	First week of June 2024
	Most parts of Nyanza	500-600	Fourth week of May 2024
	Western parts of Nyanza	600-700	First week of June 2024
	Most parts of Huye	500-600	Fourth week of May 2024
	Western parts of Huye	600-700	
	Gisagara	500-600	Fourth week of May 2024
	Eastern parts of Nyamagabe	600-700	First week of June 2024
	Most parts of Nyamagabe	700-800	
Eastern parts of Nyaruguru	500-600	Fourth week of May 2024	
North eastern parts of	600-700		



	Nyaruguru		First week of June 2024
	West and south of Nyaruguru	700-800	
Eastern Province	Bugesera	400-500	Fourth week of May 2024
	Most parts of Rwamagana	400-500	Fourth week of May 2024
	South of Rwamagana	500 - 600	
	Most parts of Kayonza	400-500	Fourth week of May 2024
	North of Kayonza	300-400	
	Most parts of Ngoma	400-500	Third week of May 2024
	North of Ngoma	500-600	Fourth week of May 2024
	Kirehe	400-500	Third week of May 2024
	Most parts of Gatsibo	300-400	Fourth week of May 2024
			Fourth week of May 2024
	West of Gatsibo	400-500	Fourth week of May 2024
	Most parts of Nyagatare	300-400	
West of Nyagatare	400-500		
Western Province	South west of Nyabihu	600-700	First week of June 2024
	Most parts of Nyabihu	700-800	
	North east of Rubavu	700-800	First week of June 2024
	Most parts of Rubavu	600-700	
	Rutsiro	600-700	First week of June 2024
	Karongi	600-700	First week of June 2024
	South of Karongi	700-800	
	North east of Ngororero	700-800	First week of June 2024
	Most parts of Ngororero	600-700	
		South of Ngororero	
	East of Nyamasheke	700-800	First week of June 2024
	Other parts of Nyamasheke	600-700	
	Rusizi near the Nyungwe National Park	700-800	First week of June 2024
	Most parts of Rusizi	600 - 700	



---

## **ADVISORIES ON EXPECTED ABOVE NORMAL RAINFALL FOR MAM 2024**

The accumulated rainfall from September to December 2023 and January to February 2024 resulted into increased saturation of the soil across the country. The seasonal rainfall for March-May 2024 is expected to be above normal which is an indication of high likelihood of extreme weather events which are associated with localized flooding, landslides, and strong winds in different parts of the country.

METEO RWANDA in collaboration with Ministry in Charge of Emergency Management (MINEMA) and Rwanda Agriculture and Animal Resources Development Board (RAB), advise the public institutions, NGOs, Private sector and the general public to take note of the forecast and use it to make informed plans and decisions such as appropriate harvesting and post harvesting handling activities, timely planting, rainy water harvesting, drainage, erosion control, precautions in mining areas, lightning protection measures as well as relocate from disaster-prone areas to a more safer areas.

Meteo Rwanda, in collaboration with MINEMA and RAB and other partners, will continue to support different initiatives aimed at availing weather and climate products for effective planning and decision making especially in flood prone areas.

For more information, contact Rwanda Meteorology Agency (METEO RWANDA) on social media and toll-free number **6080**.

***N.B This outlook is supplemented by weather updates at different timescales (24-hours, 3-days, 5-days and 7-days), 10-days forecasts, monthly forecast and advisories issued by Rwanda Meteorology Agency.***

Done at Kigali, on 23rd February 2024

**Aimable GAHIGI**  
**Director General**