



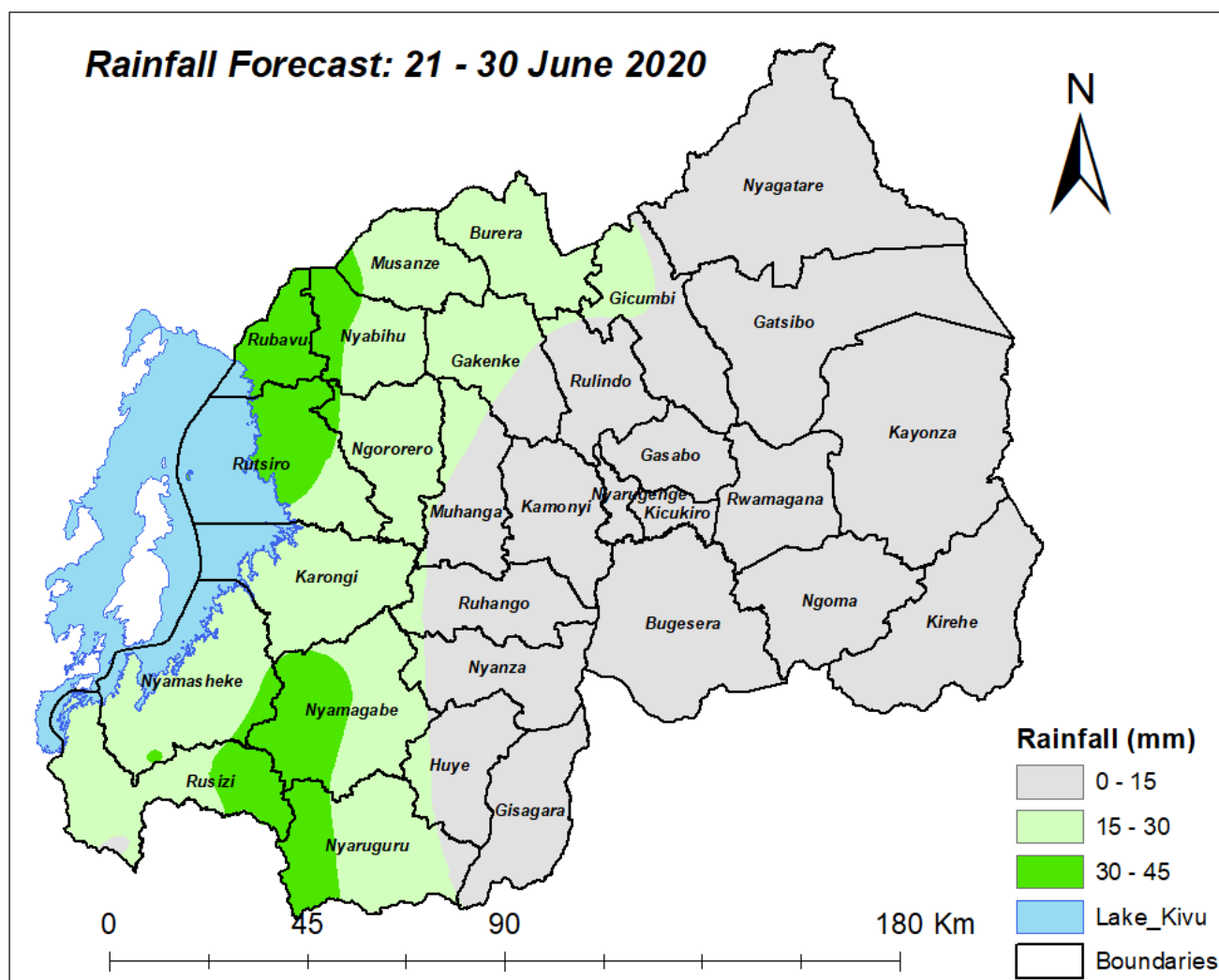
Kigali, on 20th June 2020

Rainfall forecast from 21st to 30th June 2020

Rainfall Expected from 21st to 30th June 2020 (Dekad 3) ranged between 0 and 45mm countrywide. Spatial distribution shows that rainfall ranged between 30 and 45mm is expected in Rubavu District, part of Rutsiro, Nyabihu, Nyamasheke, Nyamagabe, Nyaruguru and Rusizi Districts. Rainfall ranged between 15 and 30mm is expected in remaining parts of Western province, in Burera, Musanze, remaining part of Nyaruguru and Nyamagabe Districts, part of Gakenke Muhanga and Gicumbi. The remaining parts are expected to experience rainfall between 0 and 15mm (see more details on map below).

These rain is expected between 21st and 25th June 2020 with the average of 2 to 4 rainy days according to the area and will mainly result from local effects.

The rainfall expected in the dekad 3 of June 2020 is above the Long Term Average of third dekad of June across the country. The Long Term Average range of June dekad 3 is between 0mm and 30mm.



Kigali, kuwa 20 Kamena 2020

Imvura iteganyijwe hagati y’italiki ya 21 na 30 Kamena 2020

Mu gice cya gatatu cy’ukwezi kwa Kamena (hagati y’italiki ya 21 niya 30 Kamena) mu Rwanda hateganyijwe kurangwa n’imvura iri hagati ya milimetero 0 na 45mm muri rusange. Mu turere twa Rubavu n’igice cy’akarere ka Rutsiro, Nyabihu, Nyamasheke, Rusizi, Nyamagabe na Nyaruguru hateganyijwe imvura iri hagati ya milimetero 30 na 45. Mu bice bisigaye by’intara y’Iburengerazuba, iby’aturere twa Nyamagabe na Nyaruguru hakiyongeraho akarere ka Burera na Musanze n’igice cya karere ka Muhanga, Gakenke na Gicumbi hateganyijwe imvura iri hagati ya milimetero 15 na 30. Ahasigaye hose hateganyijwe imvura nke iri hagati ya milimetero 0 na 15. Iyi mvura iteganyijwe hagati y’italiki 21 na 25 Kamena 2020, umubare w’iminsi izagwa ukazaba uru hagati y’iminsi 2 ni 4 bitewe n’ahantu kandi ikaba izaturuka ku miterere ya buri hantu.

Imvura iteganyijwe mu gice cya gatatu hagati ya 21 – 30 Kamena 2020 iri hejuru y’impuzandengo y’imvura isanzwe igwa muri icyo gihe mu gihugu hose. Ikigereranyo cy’imvura isanzwe igwa mu gice cya gatatu muri Kamena hagati ya 21 – 30 iri hagati ya mm 0 na 20 bitewe n’ahantu.

