



SEASONAL FORECAST FOR MARCH – APRIL - MAY (MAM) 2021, N°57

Based on current and expected climate systems March – April - May (MAM) constitutes an important rainfall season over Rwanda. The National consensus climate outlook for the March – April - May 2021 season indicates normal rainfall in most parts of the country with tendency to slightly above in Eastern Province, Kigali City and few parts of Southern Province in Nyamagabe and Nyaruguru districts and slight tendency of below normal in the regions near Lake Kivu in Western Province in Ngororero, Karongi, Rutsiro and Rubavu districts.

The key driving factors expected to influence the rainfall during the MAM 2021 seasonal forecast include normal conditions in the tropical Pacific and Indian oceans that are expected to remain neutral during the season.

The merged seasonal forecasts were generated using statistical and dynamical analysis performed for each zone across the country.

The expected amount of seasonal rainfall is categorized according to the districts as follows:

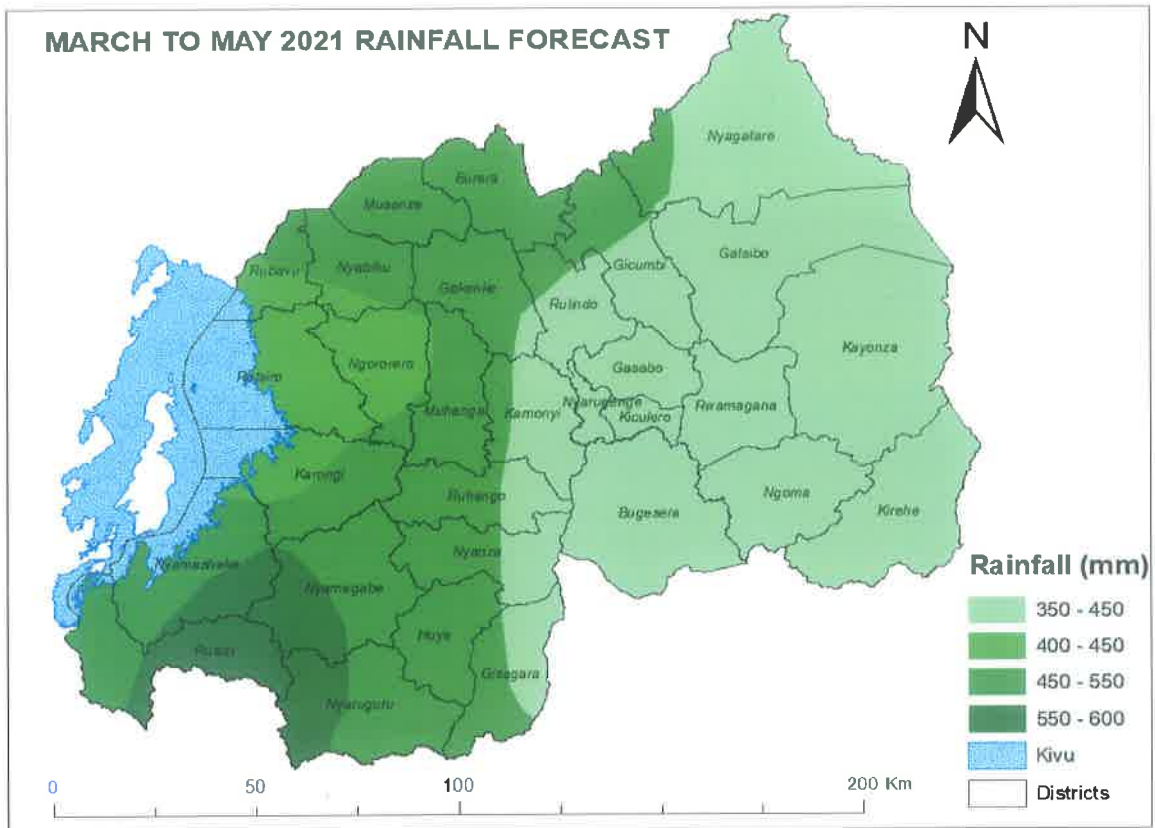
- ❖ **Rainfall ranging between 350 and 450 millimeters** is expected in Eastern Province, Kigali City, most parts of Gicumbi, Rulindo, south eastern of Gakenke in Northern Province, eastern Kamonyi, Ruhango, Nyanza and Gisagara districts in Southern Province.
- ❖ **Rainfall ranging between 400 and 450 millimeters** is expected in Rutsiro, southern part of Rubavu, most parts of Ngororero and western parts of Karongi districts in Western Province.
- ❖ **Rainfall ranging between 450 and 550 millimeters** is expected in Musanze, Burera and Gakenke districts, the northern parts of Rulindo and Gicumbi districts in Northern Province; Muhanga and Huye districts, western parts of Gisagara, Nyanza, Ruhango and in most parts of Nyamagabe and Nyaruguru districts in Southern Province; most parts of Nyabihu and Nyamasheke districts, northern Rubavu and western Rusizi in Western Province.

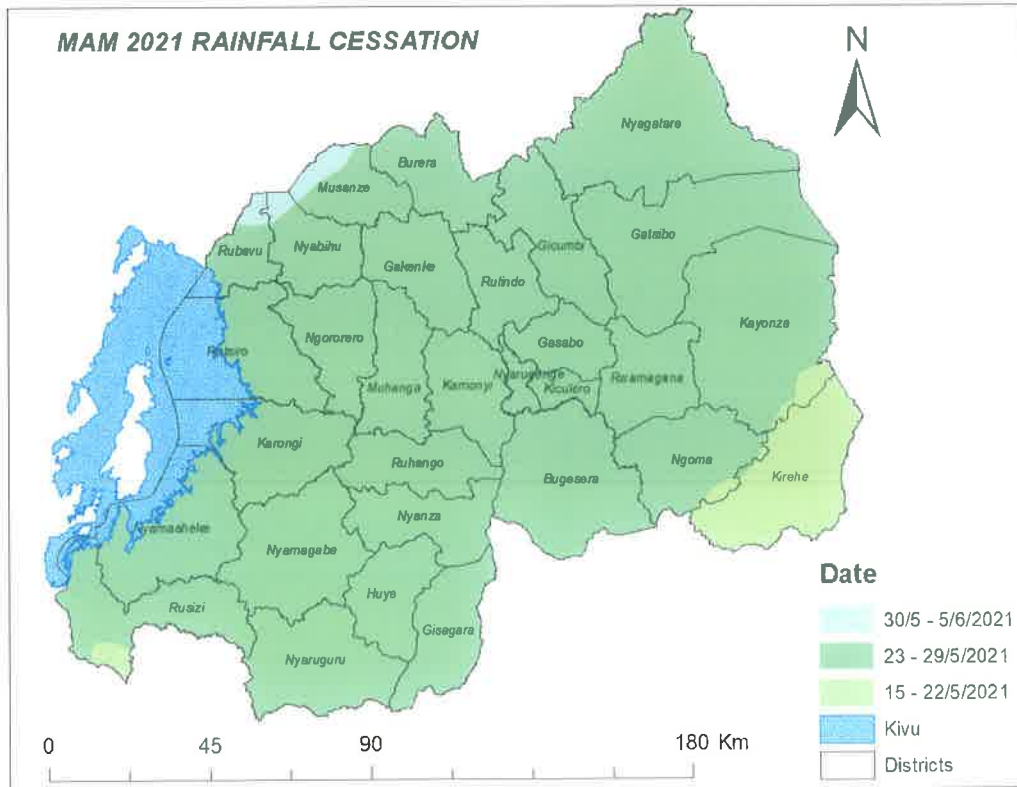
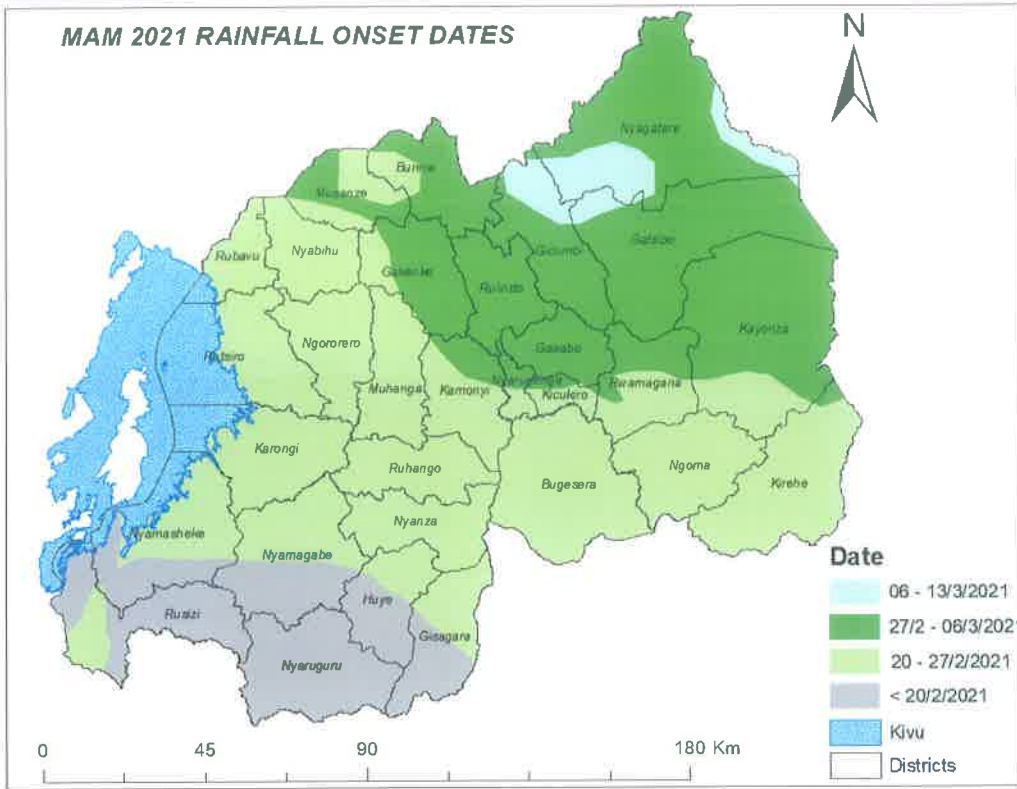


✍



- ❖ **Rainfall ranging between 550 and 600 millimeters** is expected in parts of Nyungwe National Park mainly in western parts of Nyamagabe and Nyaruguru districts in Southern Province, eastern parts of Nyamasheke and Rusizi districts in Western Province.







MAM 2021 Onset and Cessation

The onset (start of the seasonal rainfall) is expected towards the end of February 2021 except in small parts of south western of Nyagatare, north eastern part of Gicumbi and small part of north western of Gatsibo districts whereby the onset is expected in early March 2021.

The early cessation (end of seasonal rainfall) is expected between 15th and 22nd May in Kirehe district and in Bugarama plain, whereas the late cessation is expected from 30th May to 5th June 2021 in northern parts of Rubavu, Nyabihu and Musanze districts. The cessation for the remaining parts of the country is expected in the last week of May 2021.

Based on the seasonal prediction of March to May (MAM) 2021 (2021B Agricultural season), stakeholders in Agricultural sector are advised to speed up land preparation activities, seed and fertilizers delivery to the farmers, timely planting according to the suggested dates.

Expected rainfall amount in millimeters, onset and cessation dates

Provinces	Districts	Rainfall predicted (mm)	Onset dates	Cessation dates
Kigali City	Nyarugenge	350-450	20 th -27 th February	23 rd – 29 th May
	Gasabo	350-450	27 th February to 6 th March	23 rd – 29 th May
	Kicukiro	350-450	20 th -27 th February	23 rd – 29 th May
Northern	Musanze	450-550	27 th February to 6 th March	23 rd – 29 th May
			20 th -27 th February (northeast and southwest)	30 th May to 5 th June (north)
	Northern Gicumbi	450-550	27 th February to 6 th March	23 rd – 29 th May
	Southern Gicumbi	350-450		
	Rulindo	450-550	27 th February to 6 th March	23 rd – 29 th May
	Burera	450-550	27 th February to 6 th March	23 rd – 29 th May
Southern	Gakenke	450-550	27 th February to 6 th March	23 rd – 29 th May
	Eastern Kamonyi	350-450	20 th -27 th February	23 rd – 29 th May
	Western Kamonyi	450-550	27 th February to 6 th March (northeast)	
	Muhanga	450-550	20 th -27 th February	23 rd – 29 th May





	Eastern Ruhango	350-450	20 th -27 th February	23 rd – 29 th May
	Western Ruhango	450-550		
	Eastern Nyanza	350-450	20 th -27 th February	23 rd – 29 th May
	Western Nyanza	450-550		
	Huye	450-550	20 th -27 th February (North)	23 rd – 29 th May
			<20 th February (South)	
	North eastern Gisagara	350-450	20 th -27 th February (North)	23 rd – 29 th May
			<20 th February (South)	
	Eastern Nyamagabe	450-550	20 th -27 th February (North)	23 rd – 29 th May
	Western Nyamagabe	550-600	<20 th February (South)	
	Eastern Nyaruguru	450-550	20 th -27 th February (North)	23 rd – 29 th May
			<20 th February (South)	
	Western Nyaruguru	550-600	20 th -27 th February (North)	23 rd – 29 th May
			<20 th February (South)	
Eastern	Bugesera	350-450	20 th -27 th February	23 rd – 29 th May
	Rwamagana	350-450	20 th -27 th February (South)	23 rd – 29 th May
			27 th February to 6 th March (North)	
	Kayonza	350-450	20 th -27 th February (South)	23 rd – 29 th May
			27 th February to 6 th March (North)	
	Ngoma	350-450	20 th -27 th February	23 rd – 29 th May
	Kirehe	350-450	20 th -27 th February	15 th -23 rd May
	Gatsibo	350-450	27 th February to 6 th March	23 rd – 29 th May
Nyagatare	350-450	27 th February to 6 th March	23 rd – 29 th May	
		6 th -13 th March (southwest)		
Western	Southern Nyabihu	400-450	20 th -27 th February	23 rd – 29 th May
	Northern Nyabihu	450-550		29 th May- 5 th June (north)
	Northern	450-550	20 th -27 th February	23 rd – 29 th May





Rubavu			
Southern Rubavu	400-450		29 th May- 5 th June (North)
Rutsiro	400-450	20 th -27 th February	23 rd – 29 th May
Northern Karongi	400-450	20 th -27 th February	23 rd – 29 th May
Southern Karongi	450-550		
Ngororero	400-450	20 th -27 th February	23 rd – 29 th May
Western Nyamasheke	450-550	20 th -27 th February (North)	23 rd – 29 th May
Eastern Nyamasheke	550-600	<20 th February (South)	
Eastern Rusizi	450-550	20 th -27 th February (Central)	23 rd – 29 th May
Western Rusizi	550-600	<20 th February (South)	15 th -23rd May (Bugarama plain)

THE EXPECTED IMPACTS IN VARIOUS SECTORS

The expected normal rainfall with tendency of slightly increase or decrease during the March to May 2021 rainfall season may lead to hydrometeorological related phenomena such as floods, dry spells, strong winds, landslides, rainstorms, hailstorms, thunderstorms and water born diseases among others.

Therefore, relevant institutions with activities that depend on rainfall and other concerned sectors/activities like infrastructures, agriculture, health and settlements, and disaster risk management should put in place both preventive/mitigative and preparedness strategies to minimize the impacts related to mentioned weather induced phenomena.

N.B: This outlook is supplemented by updates of different timescales namely monthly, 10-days, 5-days, 3-days, daily, 6-hours forecasts and advisories issued by Rwanda Meteorology Agency.

Done on 24th February, 2021.

Aimable GAHIGI
Director General

