



Weather Forecast for the month of June 2024

1. Rainfall forecast

During the month of June 2024, the amount of rainfall ranging between 0 and 50 mm is expected across the country. The expected rainfall in the month of June 2024 will be in the range of Long-Term Mean (the LTM range between 0 and 50 mm) countrywide. The main drivers are neutral phase of Indian Ocean Dipole (IOD) and neutral Sea Surface Temperatures in the Pacific Ocean.

The spatial distribution map shows expected higher amount of rainfall ranging between 40 and 50 mm over western parts of Nyabihu, northern Rubavu and Musanze Districts. In addition, Rainfall ranging between 30 and 40mm is expected in parts of Burera, Musanze, Nyabihu, Rubavu, Ngororero, Rutsiro, Nyamasheke and Rusizi in Nyungwe National Park area. Rainfall ranging between 20 and 30 mm is expected in remaining parts of Burera, Rutsiro, Rusizi and Nyamasheke Districts, western Gakenke; Karongi; Rubavu; Nyamagabe and Nyaruguru Districts, eastern parts of Musanze, Nyabihu and central parts of Ngororero Districts. Rainfall ranging between 0 and 10 mm is the lowest expected in many parts of Nyagatare, Gatsibo, Kayonza, Kirehe, Bugesera, Gisagara, Huye, Ruhango, and Kamonyi Districts, Kigali city, Eastern parts of Nyaruguru and Nyamagabe Districts, Northern Rwamagana and southeastern of Muhanga and Gicumbi Districts. The remaining parts of the country is expected to receive rainfall ranging between 10 and 20 mm.

2. Wind Speed forecast

The wind speed distribution indicated by the map for the month of June 2024, shows that moderate to strong wind speed ranging between 6m/s and 8m/s (yellow colour) is expected over most parts of the western province, western Nyamagabe and Nyagatare Districts, central Kirehe, northern Gatsibo and many parts of Gicumbi and Burera Districts whereas the remaining parts of the country are expected to receive moderate wind speed ranging between 4 and 6 m/s (green colour).

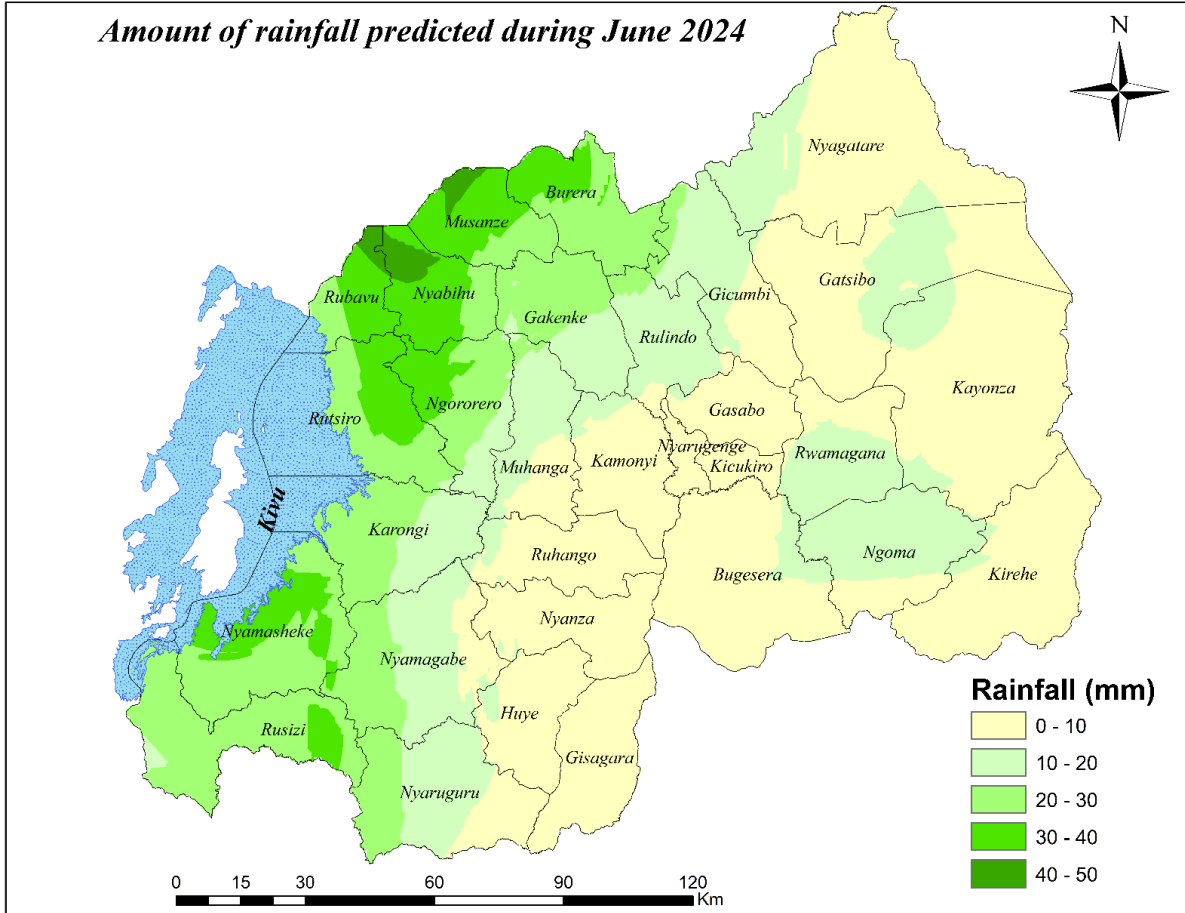
3. Temperature forecast

During the month of June 2024, the mean maximum temperature is expected to range between 20°C and 30°C. Temperature ranging between 28°C and 30°C is the highest expected in the month of June 2024 over many parts of Kigali City, Bugesera, Eastern parts of Kamonyi, Ruhango, Nyanza and Gisagara Districts, and Bugarama plain in the Rusizi dDistrict . The lowest maximum temperature is expected to range between 20°C and 22°C in northern parts of Burera and Musanze Districts and western parts of Nyabihu and eastern parts of Rubavu Districts. The expected temperature will be in the range of Long-Term Mean maximum temperature for the month of June.

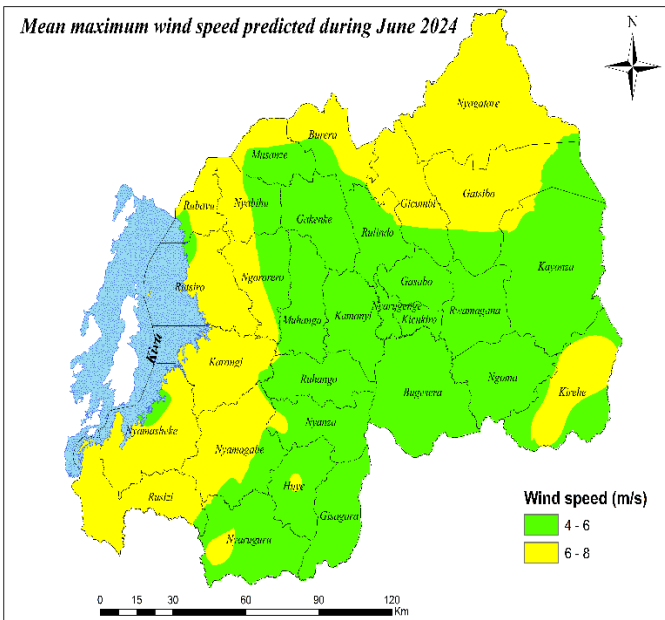
For more spatial details of rainfall, maximum temperature and wind speed distribution, please do refer to the following maps below.



Amount of rainfall predicted during June 2024



Mean maximum wind speed predicted during June 2024



Mean maximum temperature predicted during June 2024

