



Kigali, 10th June 2024

Weather forecast valid between 11th and 20th June 2024

1. **Rainfall forecast:** During the second (2nd) dekad of June 2024, a reduction of rainfall is expected across the country. The amount of rainfall ranging between 0 and 30 mm is expected across the country. The expected rainfall amount is in the range of Long-Term Mean (LTM) countrywide (The range of LTM varies between 0 and 30 mm). Rainy days are expected to vary between one (1) and three (3) days depending on the location and the rains are expected on 12th, 15th and 17th. The main factor influencing rainfall are the local factors.

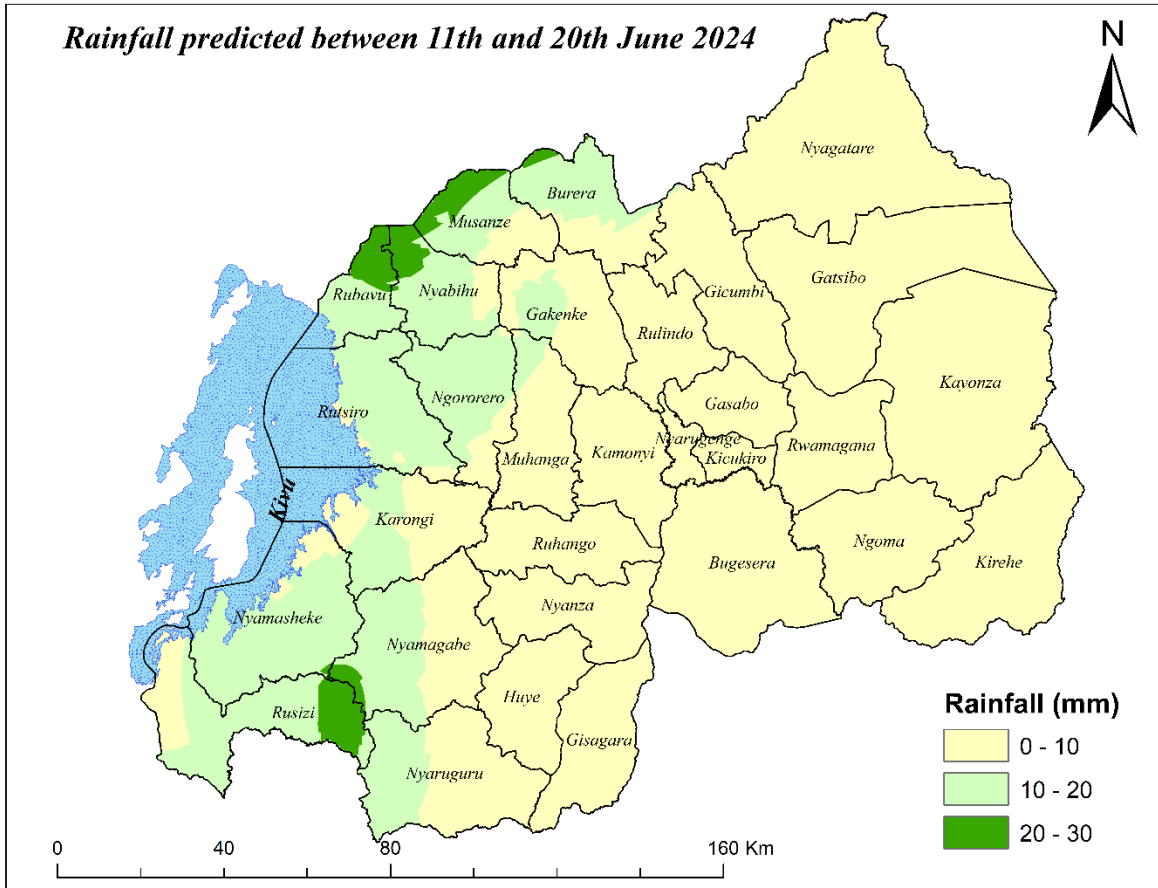
Spatial distribution of rainfall: Rainfall ranging between 20 and 30 mm is the highest expected over localized parts of Rusizi in the Nyungwe National Park and northern parts of Rubavu, Nyabihu, Musanze and Burera Districts. Rainfall ranging between 10 and 20 mm is expected in remaining parts of Rubavu, Nyamasheke, Rutsiro, northern and western parts of Ngororero and Nyabihu, central parts of Karongi, Burera and Musanze Districts, Nyamasheke and many parts of Rusizi, western parts of Nyamagabe and Nyaruguru Districts and central parts of Gakenke District. The remaining parts of the country are expected to experience rainfall ranging between 0 and 10 mm.

2. **Forecast of wind speed:** Moderate to slightly strong wind speed ranging between 4 and 8 m/s is expected across the country. Moderate wind speed ranging between 4 and 6 m/s (green colour) is expected in many parts of the country except in parts of Nyagatare, Gatsibo, Gicumbi, Nyamasheke, Karongi, Rutsiro, Rubavu, western Nyamagabe and Nyabihu, and Rusizi Districts where slightly strong wind speed ranging between 6 and 8 m/s (yellow colour) is predicted.
3. **Temperature forecast:** During the second dekad of June 2024, the average maximum temperature is expected to range between 20°C and 30°C, which is in the range of LTM maximum temperature of the 2nd dekad of June. Southern parts of Rusizi in the Bugarama plain is expected to record the highest temperature ranging between 28°C and 30°C. Eastern parts of Huye, Gisagara, Nyanza, Ruhango, Kamonyi, Nyagatare, Gatsibo and Kayonza Districts, western parts of Karongi, Ngoma and Rwamagana and many parts of Kigali city are expected to experience maximum temperature ranging between 26°C and 28°C. Many parts of Nyabihu District, eastern parts of Rubavu, northern parts of Ngororero, Musanze and Burera Districts are expected to experience lower maximum temperatures ranging between 20°C and 22°C.

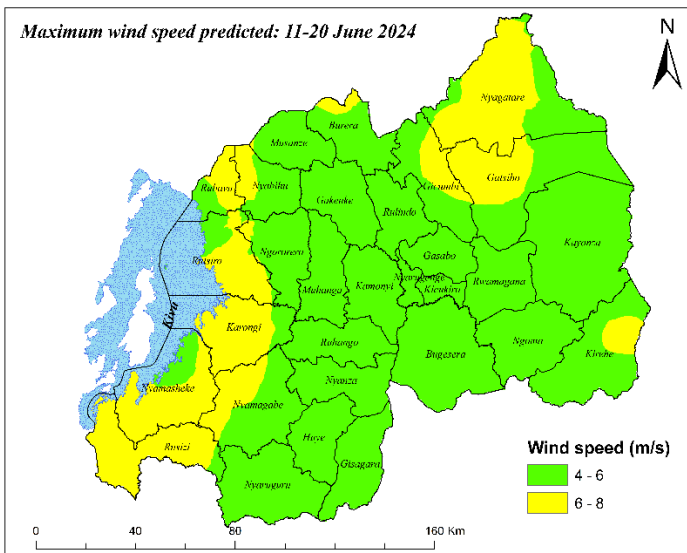
For more detailed information on spatial distribution map of rainfall, maximum temperature and wind speed please refer to the following maps below.



Rainfall predicted between 11th and 20th June 2024



Maximum wind speed predicted: 11-20 June 2024



Maximum temperature predicted: 11-20 June 2024

